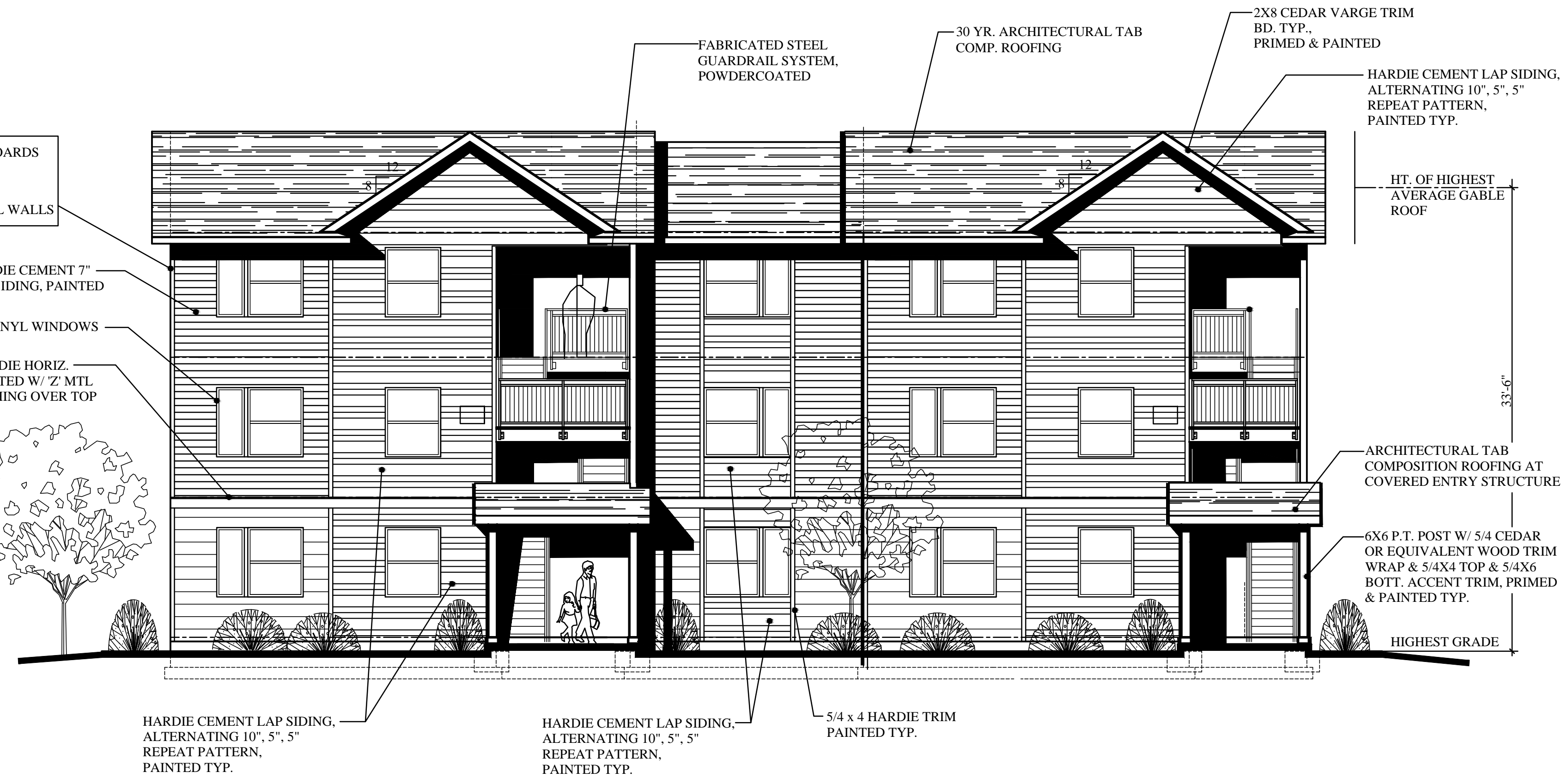
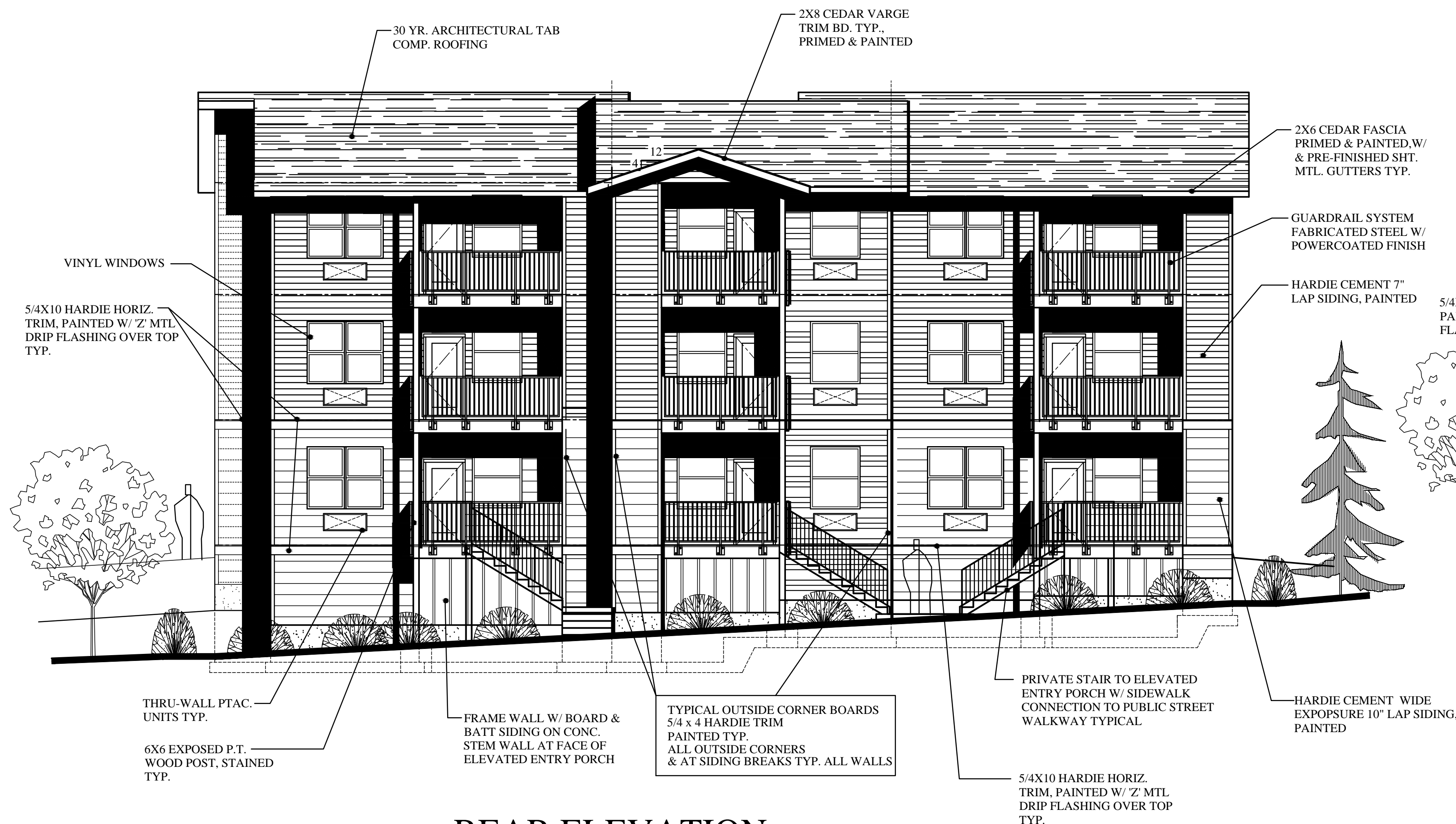


LEFT END ELEVATION 9-PLEX

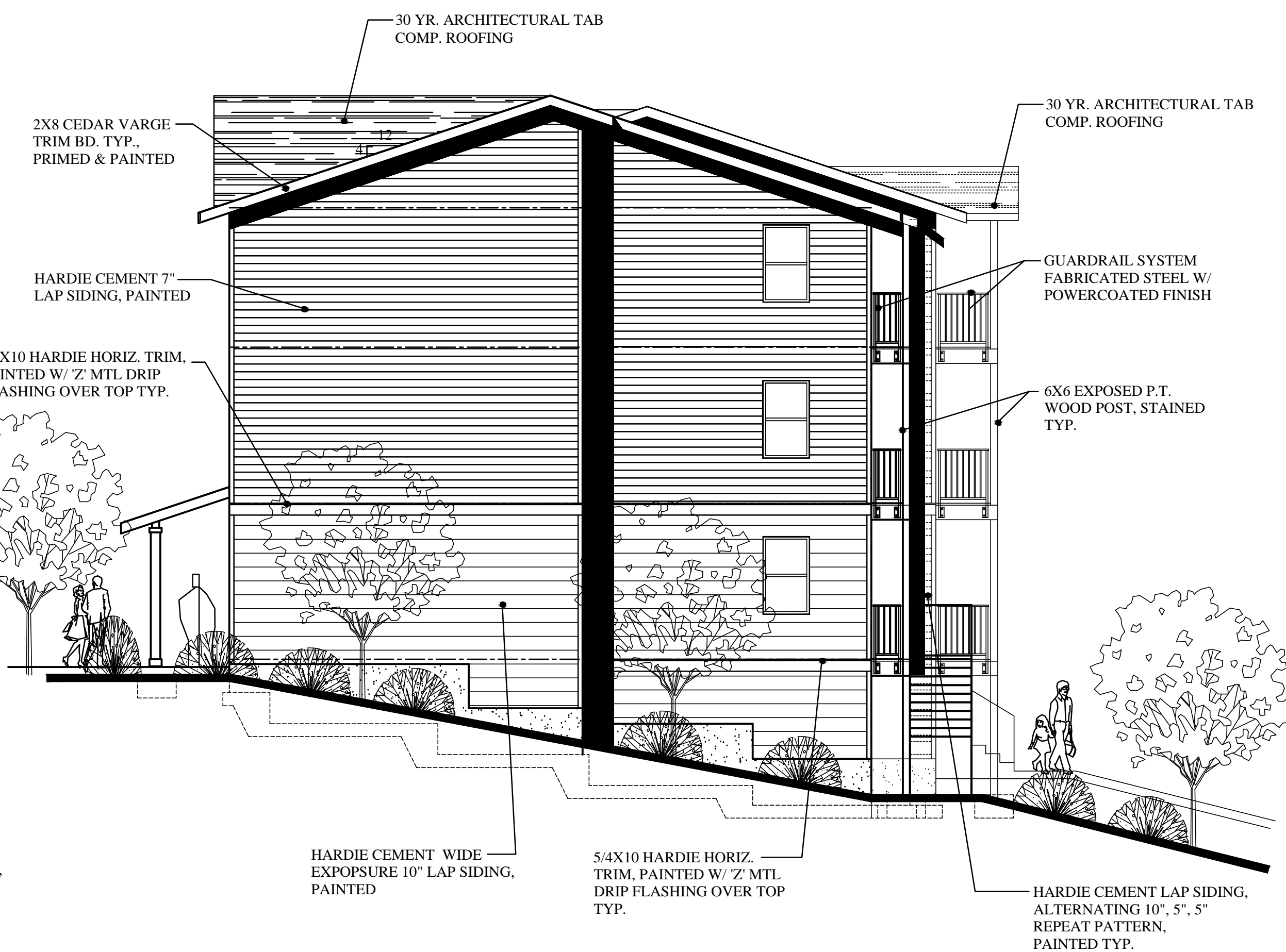


FRONT ELEVATION 9-PLEX

BLDG. K



REAR ELEVATION 9-PLEX



RIGHT END ELEVATION 9-PLEX

PRELIMINARY
NOT FOR
CONSTRUCTION

SCOTT BECK
ARCHITECT, LLC
361 N.E. Third Avenue
Canby, Oregon 97013
(503) 266-9270

BAXTER RD.
MULTIFAMILY HOUSING
1709 BAXTER RD. S.E.
SALEM, OREGON
DEVELOPER:
NEIGHBORLY VENTURES, INC.
2595 RIVER ROAD S., SUITE 100
SALEM, OR 97302, TEL: (503) 990-8909

9-PLEX
BLDG. TYPE I
EXTERIOR
ELEVATIONS
BLDG. K

revisions:

date: 1-27-2025
scale: 5/32"=1'-0"
drawn: S.R.B.
job no: 2406

A5.2C