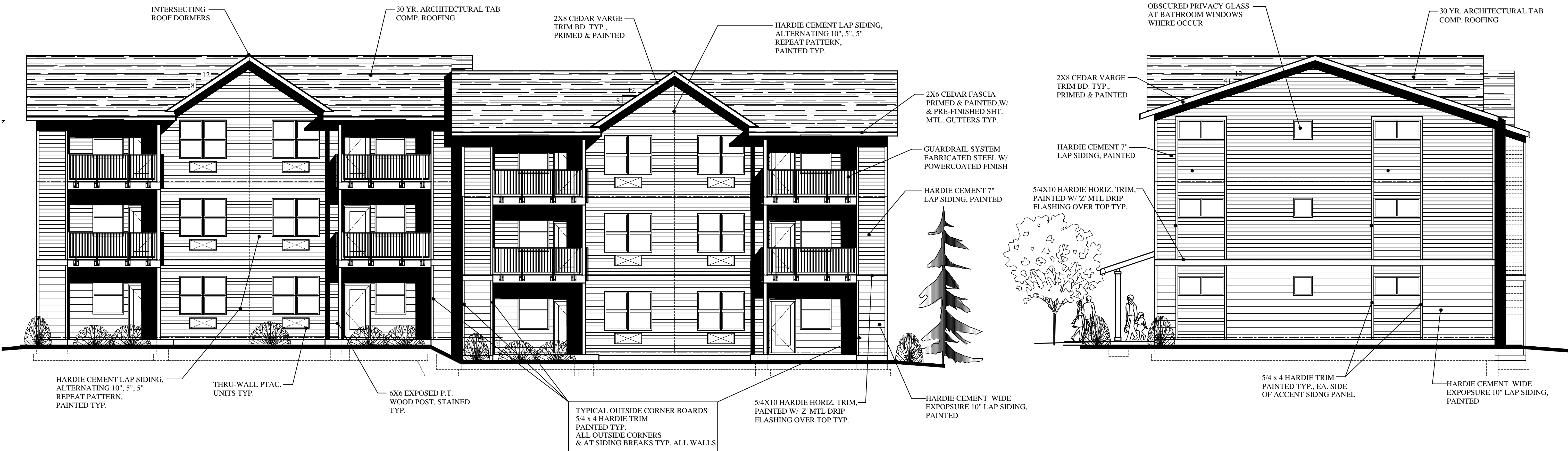


LEFT END ELEVATION 12-PLEX

FRONT ELEVATION 12-PLEX

BLDG. A



REAR ELEVATION 12-PLEX

RIGHT END ELEVATION 12-PLEX

PRELIMINARY
NOT FOR
CONSTRUCTION

SCOTT BECK
ARCHITECT, LLC
361 N.E. Third Avenue
Canby, Oregon 97013
(503) 266-9270

BAXTER RD.
MULTIFAMILY HOUSING
1709 BAXTER RD. S.E.
SALEM, OREGON
DEVELOPER:
NEIGHBORLY VENTURES, INC.
2595 RIVER ROAD S., SUITE 100
SALEM, OR 97302, TEL.: (503) 990-8909

12-PLEX
BLDG. TYPE II
EXTERIOR
ELEVATIONS

revisions:

date: 12-17-2024
scale: 5/32"=1'-0"
drawn: S.R.B.
job no: 2411

A5.3