

**PRELIMINARY
NOT FOR
CONSTRUCTION**

**SCOTT BECK
ARCHITECT, LLC**
361 N.E. Third Avenue
Canby, Oregon 97013
(503) 266-9270

**BAXTER RD.
MULTIFAMILY HOUSING**
1709 BAXTER RD. S.E.
SALEM, OREGON

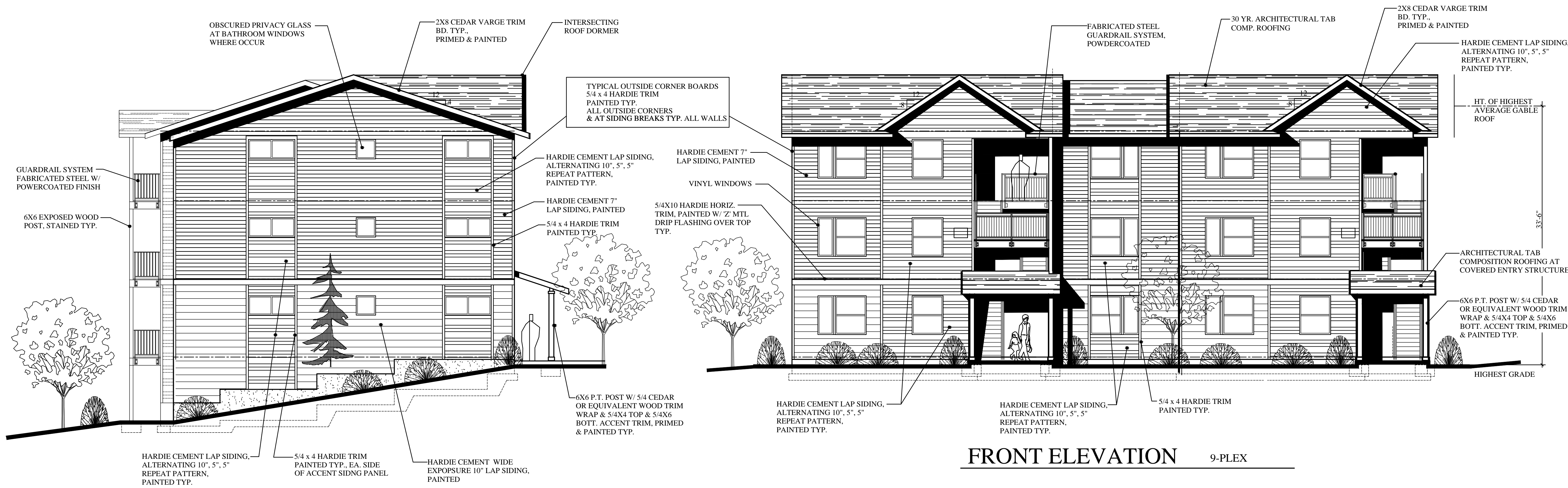
DEVELOPER:
NEIGHBORLY VENTURES, INC.
2595 RIVER ROAD S., SUITE 100
SALEM, OR 97302, TEL: (503) 950-8909

**9-PLEX
BLDG. TYPE I
EXTERIOR
ELEVATIONS**

revisions:

date: 12-17-2024
scale: 5/32"=1'-0"
drawn: S.R.B.
job no: 2406

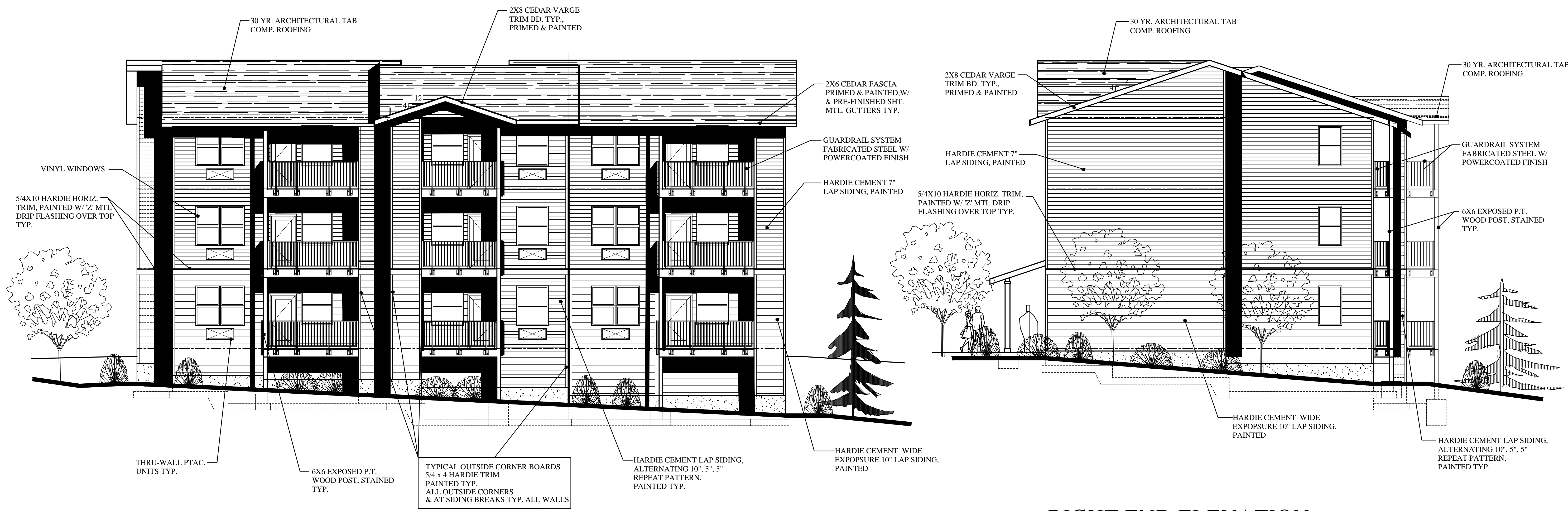
A5.2A



FRONT ELEVATION 9-PLEX

LEFT END ELEVATION 9-PLEX

BLDG. F



RIGHT END ELEVATION 9-PLEX

REAR ELEVATION 9-PLEX