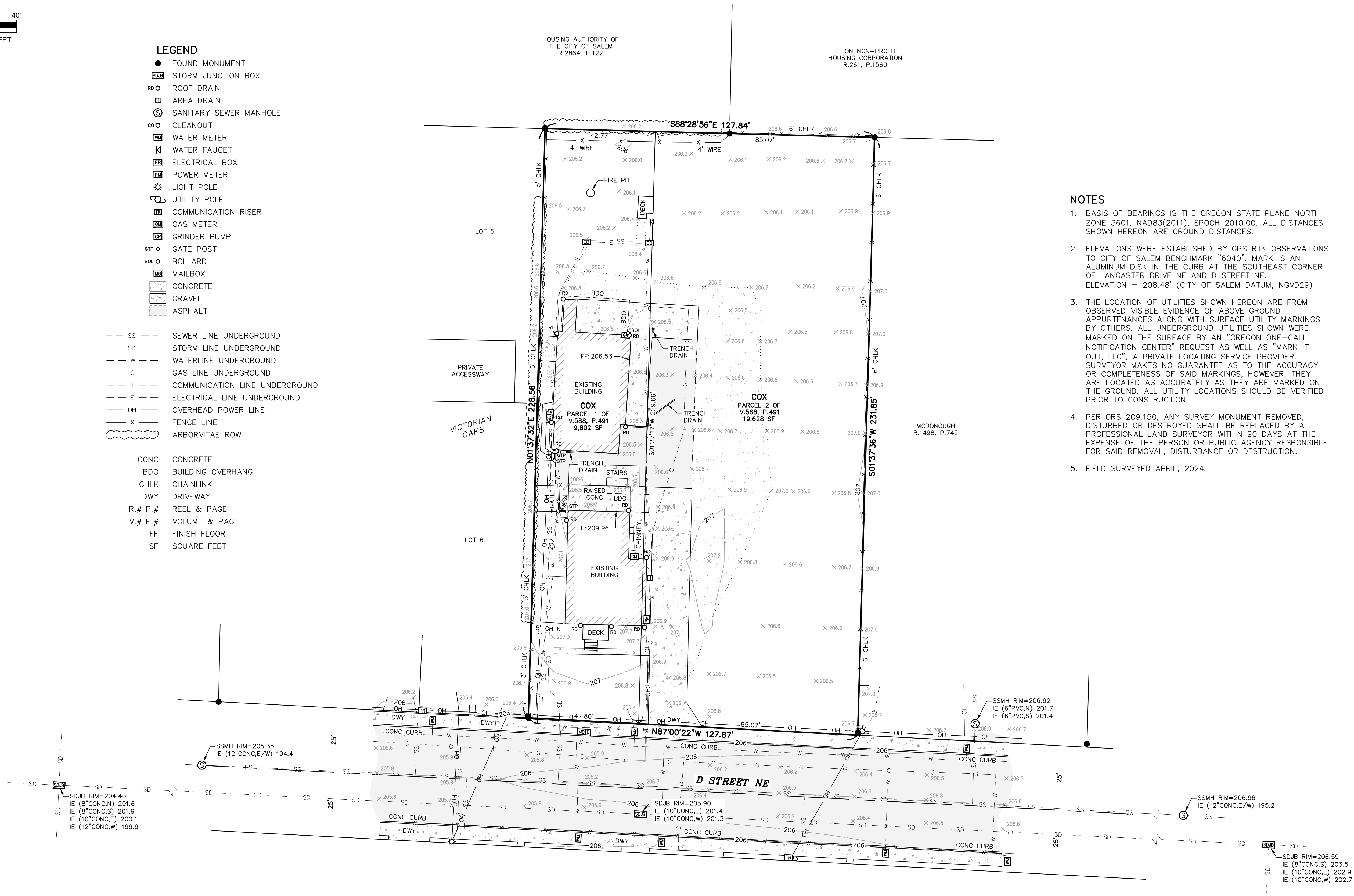


LEGEND

- FOUND MONUMENT
- SDJ Storm Junction Box
- RD Roof Drain
- Area Drain
- Sanitary Sewer Manhole
- CO Cleanout
- Water Meter
- Water Faucet
- Electrical Box
- Power Meter
- Light Pole
- Utility Pole
- Communication Riser
- Gas Meter
- Grinder Pump
- GTP Gate Post
- BOL Bollard
- Mailbox
- CONC Concrete
- Gravel
- Asphalt

- SS Sewer Line Underground
- SD Storm Line Underground
- W Waterline Underground
- G Gas Line Underground
- T Communication Line Underground
- E Electrical Line Underground
- OH Overhead Power Line
- X Fence Line
- Arborvitae Row

- CONC Concrete
- BDO Building Overhang
- CHLK Chainlink
- DWY Driveway
- R.# P.# Reel & Page
- V.# P.# Volume & Page
- FF Finish Floor
- SF Square Feet



NOTES

- BASIS OF BEARINGS IS THE OREGON STATE PLANE NORTH ZONE 3601, NAD83(2011), EPOCH 2010.00. ALL DISTANCES SHOWN HEREON ARE GROUND DISTANCES.
- ELEVATIONS WERE ESTABLISHED BY GPS RTK OBSERVATIONS TO CITY OF SALEM BENCHMARK "6040". MARK IS AN ALUMINUM DISK IN THE CURB AT THE SOUTHEAST CORNER OF LANCASTER DRIVE NE AND D STREET NE. ELEVATION = 208.48' (CITY OF SALEM DATUM, NGVD29)
- THE LOCATION OF UTILITIES SHOWN HEREON ARE FROM OBSERVED VISIBLE EVIDENCE OF ABOVE GROUND APPURTENANCES ALONG WITH SURFACE UTILITY MARKINGS BY OTHERS. ALL UNDERGROUND UTILITIES SHOWN WERE MARKED ON THE SURFACE BY AN "OREGON ONE-CALL NOTIFICATION CENTER" REQUEST AS WELL AS "MARK IT OUT, LLC", A PRIVATE LOCATING SERVICE PROVIDER. SURVEYOR MAKES NO GUARANTEE AS TO THE ACCURACY OR COMPLETENESS OF SAID MARKINGS, HOWEVER, THEY ARE LOCATED AS ACCURATELY AS THEY ARE MARKED ON THE GROUND. ALL UTILITY LOCATIONS SHOULD BE VERIFIED PRIOR TO CONSTRUCTION.
- PER ORS 209.150, ANY SURVEY MONUMENT REMOVED, DISTURBED OR DESTROYED SHALL BE REPLACED BY A PROFESSIONAL LAND SURVEYOR WITHIN 90 DAYS AT THE EXPENSE OF THE PERSON OR PUBLIC AGENCY RESPONSIBLE FOR SAID REMOVAL, DISTURBANCE OR DESTRUCTION.
- FIELD SURVEYED APRIL, 2024.

FFN SURVEYING



7230 3rd Street SE #145, Turner, OR 97392  
P: (503) 558-3330 E: info@ffnsurveying.com

TOPOGRAPHIC SURVEY  
FOR: SKYLINE BUILDERS, LLC

IN THE SE 1/4 OF SECTION 24, T.7S., R.3W., W.M.  
CITY OF SALEM, MARION COUNTY, OREGON

REGISTERED  
PROFESSIONAL  
LAND SURVEYOR

OREGON  
SEPTEMBER 12, 2017  
STEVEN J. HOWELL  
91559

RENEWALS: 6-30-2025

REVISIONS

NO.	DATE	DESCRIPTION
0	21APR24	INITIAL RELEASE

JOB NO. 24-500

SHEET 1/1