

REQUEST FOR COMMENTS

Sí necesita ayuda para comprender esta información, por favor llame 503-588-6173

REGARDING: Class 3 Major Historic Design Review Case No. **AMANDA NO.:** 24-118662-PLN
HIS24-19

PROJECT ADDRESS: 170 High St SE, Salem OR 97301

HEARD BY: Historic Landmarks Commission

SUMMARY: A proposal to install a reconstruction of the historic "ELSINORE" blade sign c.1928 and restore aspects of the marquee and entrance area.

REQUEST: A proposal to install a reconstruction of the c. 1928 historic "Elsinore" blade sign, install more period appropriate lighting to replace non-historic ones and add 2 message boards on the marquee, and replace deteriorated non-historic tile in the entrance alcove and door hardware on the Elsinore Theatre (1926), a historic contributing building in Salem's Downtown Historic District, zoned CB (Central Business District), and located at 170 High Street SE; 97301; Marion County Assessors Map and Tax Lot number: 073W27AB02100.

The Planning Division is interested in hearing from you about the attached proposal. Staff will prepare a report for the Review Authority that includes comments received during this comment period. We are interested in receiving pertinent, factual information such as neighborhood association recommendations and comments from affected property owners or residents. The complete case file, including all materials submitted by the applicant and any applicable professional studies such as traffic impact analysis, geologic assessments, and stormwater reports, are available upon request.

Comments received by 5:00 p.m. Wednesday, October 9, 2024, will be considered in the staff report. Comments received after this date will be provided to the review body. *Comments submitted are public record. This includes any personal information provided in your comment such as name, email, physical address and phone number. Mailed comments can take up to 7 calendar days to arrive at our office. To ensure that your comments are received by the deadline, we recommend that you e-mail your comments to the Case Manager listed below, or submit comments online at <https://egov.cityofsalem.net/PlanningComments>*

CASE MANAGER: Jacob Morris, Historic Preservation Planner, City of Salem, Planning Division; 555 Liberty St SE, Room 305, Salem, OR 97301; Phone: 503-540-2417; E-Mail: jjmorris@cityofsalem.net.

For information about Planning in Salem, please visit: <http://www.cityofsalem.net/planning>

PLEASE CHECK THE FOLLOWING ITEMS THAT APPLY:

- ____ 1. We have reviewed the proposal and have no comments.
____ 2. We have reviewed the proposal and have the following comments:

Name/Agency: _____

Address: _____

Email: _____

Phone No.: _____

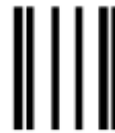
Date: _____

IMPORTANT: IF YOU MAIL YOUR COMMENTS, PLEASE FOLD AND RETURN THIS POSTAGE-PAID FORM

BUSINESS REPLY MAIL
FIRST-CLASS MAIL PERMIT NO. 1508 SALEM, OR

POSTAGE WILL BE PAID BY ADDRESSEE

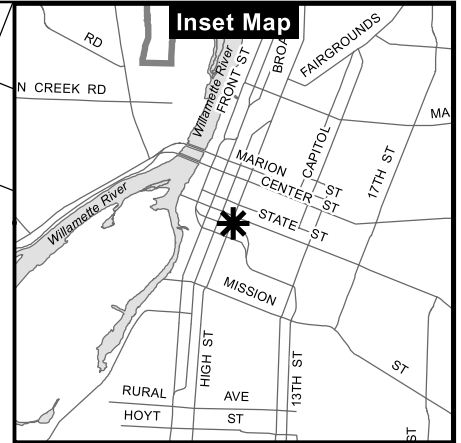
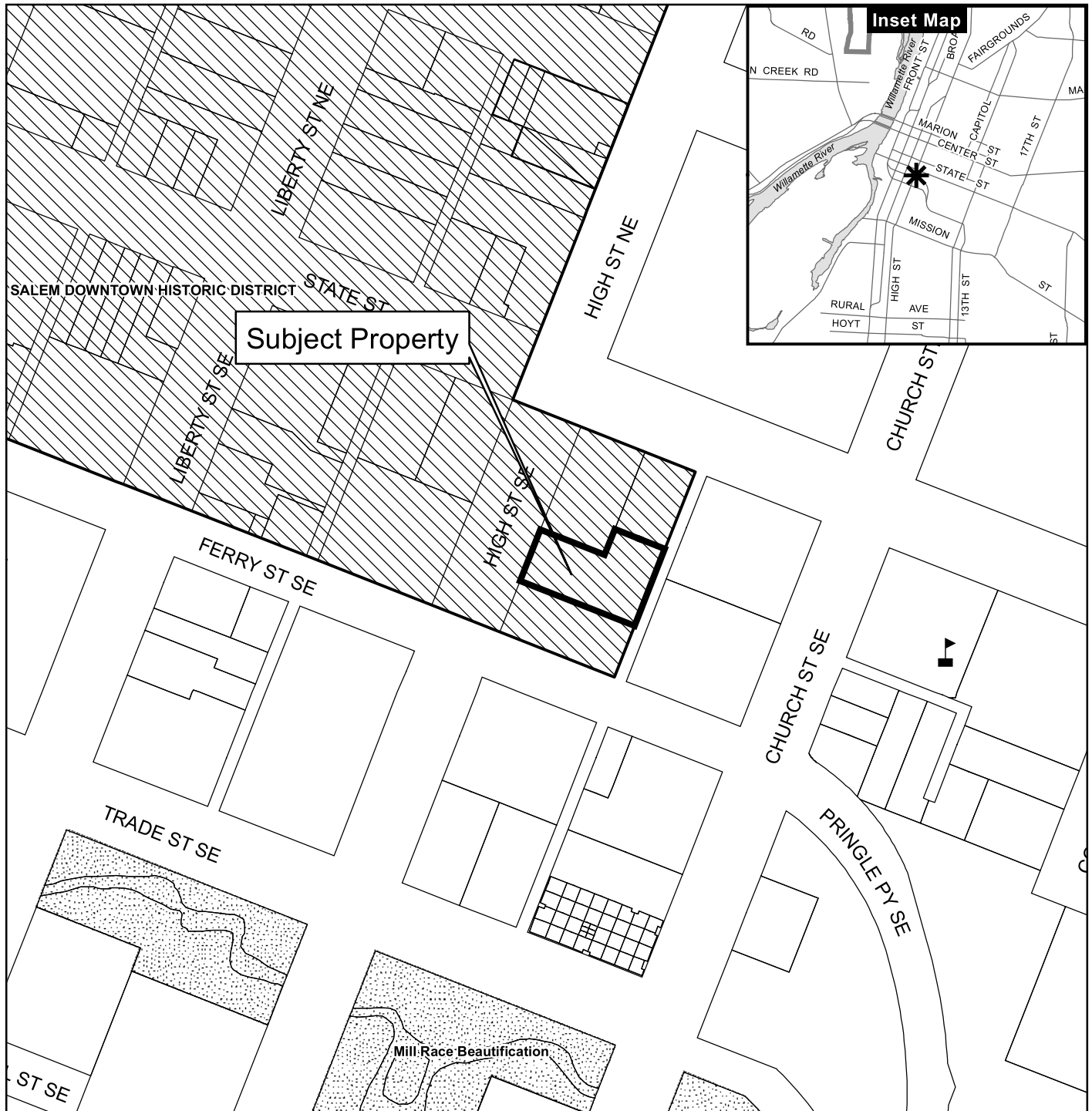
PLANNING DIVISION
CITY OF SALEM RM 305
555 LIBERTY ST SE
SALEM OR 97301-9907



NO POSTAGE
NECESSARY
IF MAILED
IN THE
UNITED STATES



Vicinity Map 170 High Street SE



Legend

- Taxlots
- Urban Growth Boundary
- City Limits
- Outside Salem City Limits
- Historic District
- Schools

- Parks

CITY OF Salem
AT YOUR SERVICE
Community Development Dept.

0 100 200 400 Feet



This product is provided as is, without warranty. In no event is the City of Salem liable for damages from the use of this product. This product is subject to license and copyright limitations and further distribution or resale is prohibited.



Legend

- Centerline (Labels)
- Historic Buildings
- Annexations (delayed)
- Taxlots
- Creeks
 - 50 - 200
 - 200 - 640
 - 640 - 6400
 - GT 6400
- Hydrology
- Street Class
 - Future Minor Arterial
 - Future Collector
 - Major Arterial
 - Minor Arterial
 - Parkway
 - Collector
 - Highway/Freeway
- Urban Growth Boundary
- City Limit

1:798



0.03 0 0.01 0.03 Miles

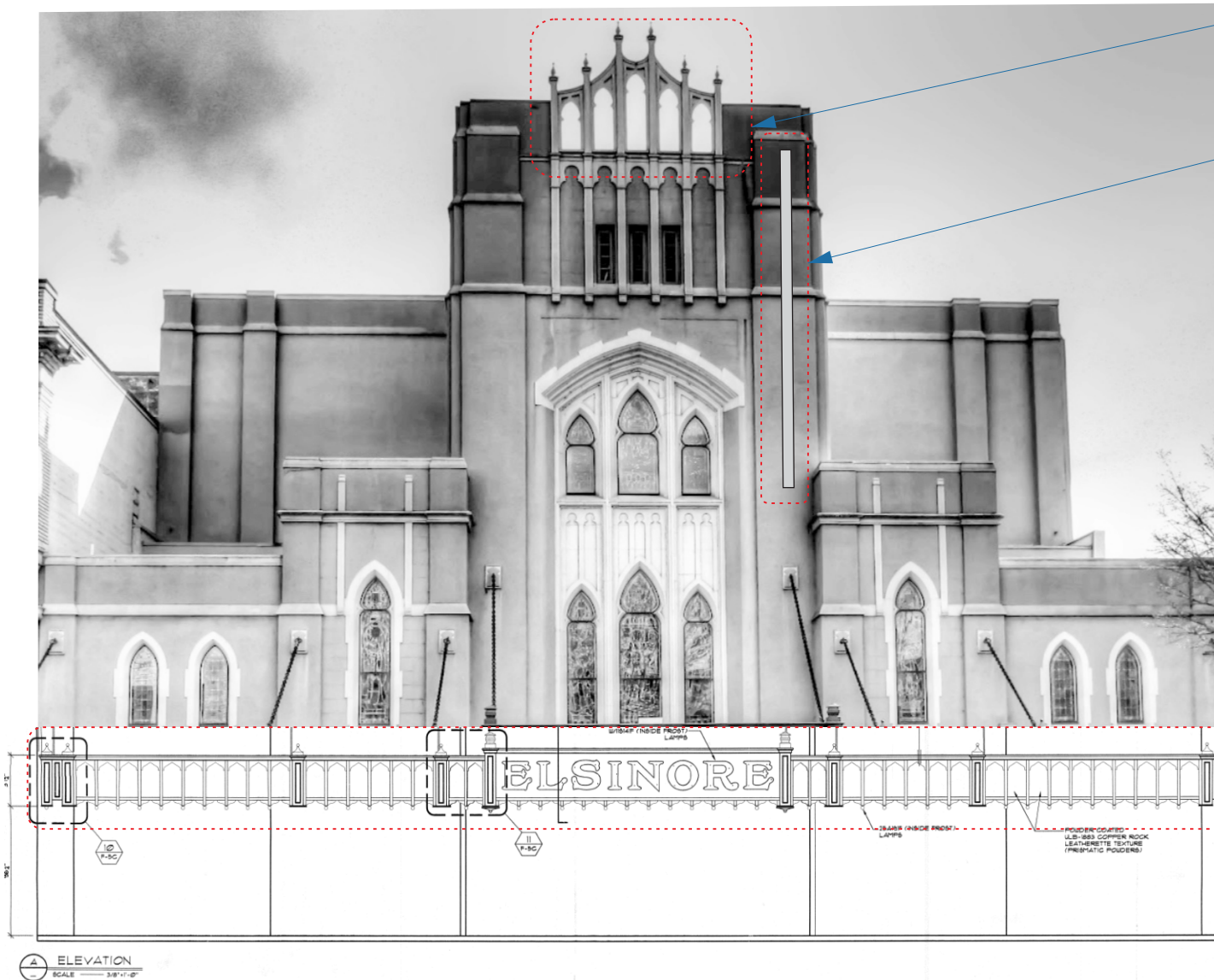
WGS_1984_Web_Mercator_Auxiliary_Sphere
City of Salem, Oregon

This map is a user generated static output from an Internet mapping site and is for reference only. Data layers that appear on this map may or may not be accurate, current, or otherwise reliable.

THIS MAP IS NOT TO BE USED FOR NAVIGATION

Notes

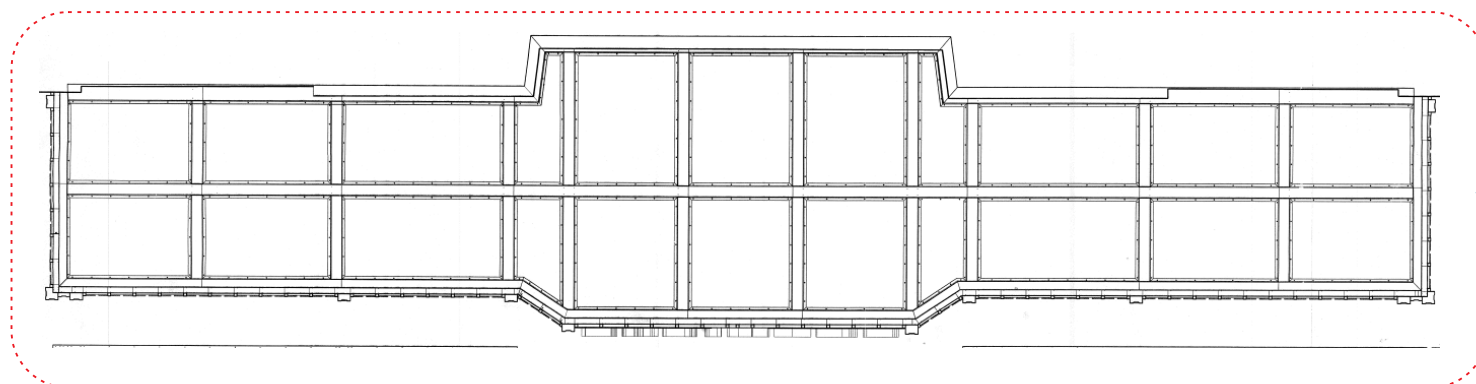
Enter notes here...



D- NEW TOP STRUCTURES

C- NEW BLADE SIGN

A- MARQUEE RENOVATION



B- SOFFITT RENOVATION



Elsinore Theatre, 170 High St SE, Salem, OR 97301

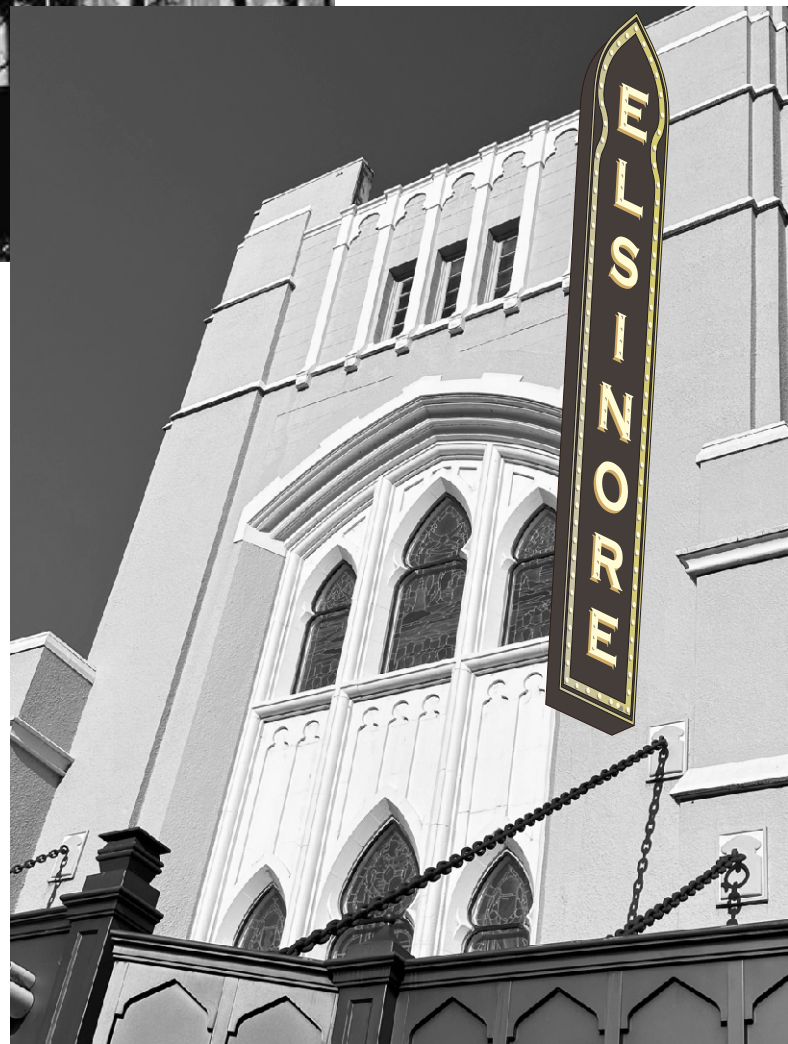


A Division of IEC SERVICES

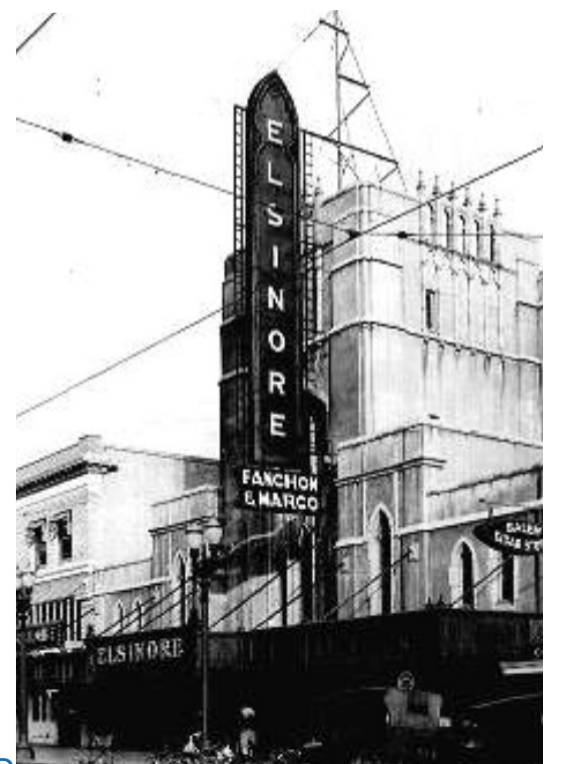
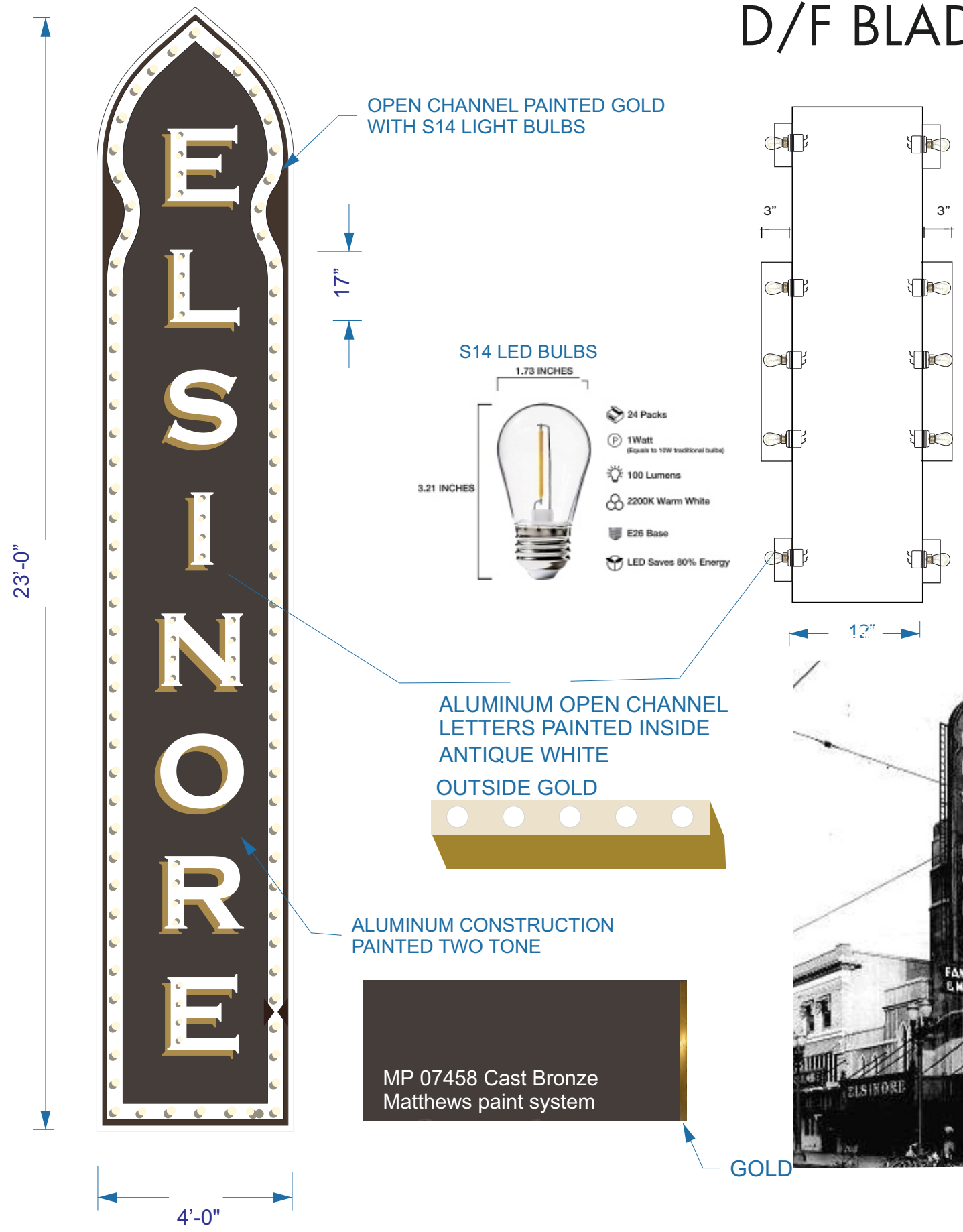
Final Design SEPT 1 24

5410 Warehouse Way.
Sacramento, CA 95826
916-379-0225

Final Design REV. APRIL 15 24
Final Design REV. JUNE 14 24



D/F BLADE SIGN



FERNANDO DUARTE DESIGN

ORNAMENTAL ARTS & DESIGN

p 510 375 0263 www.duarteid.com

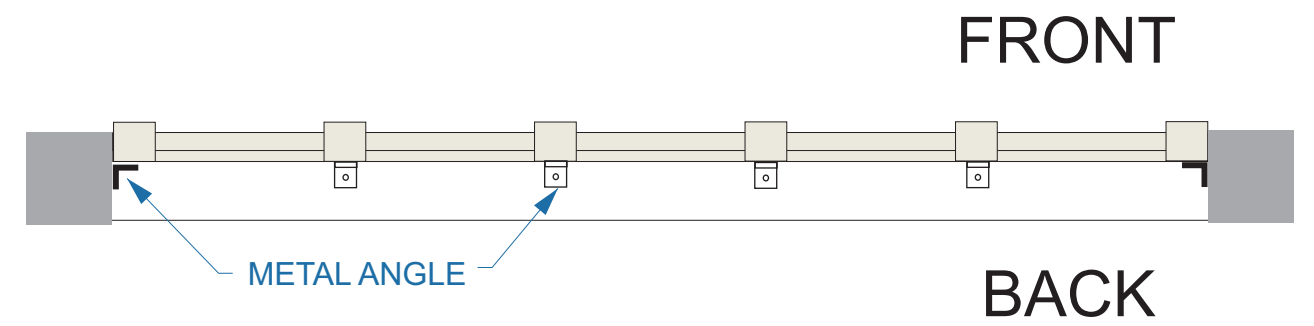
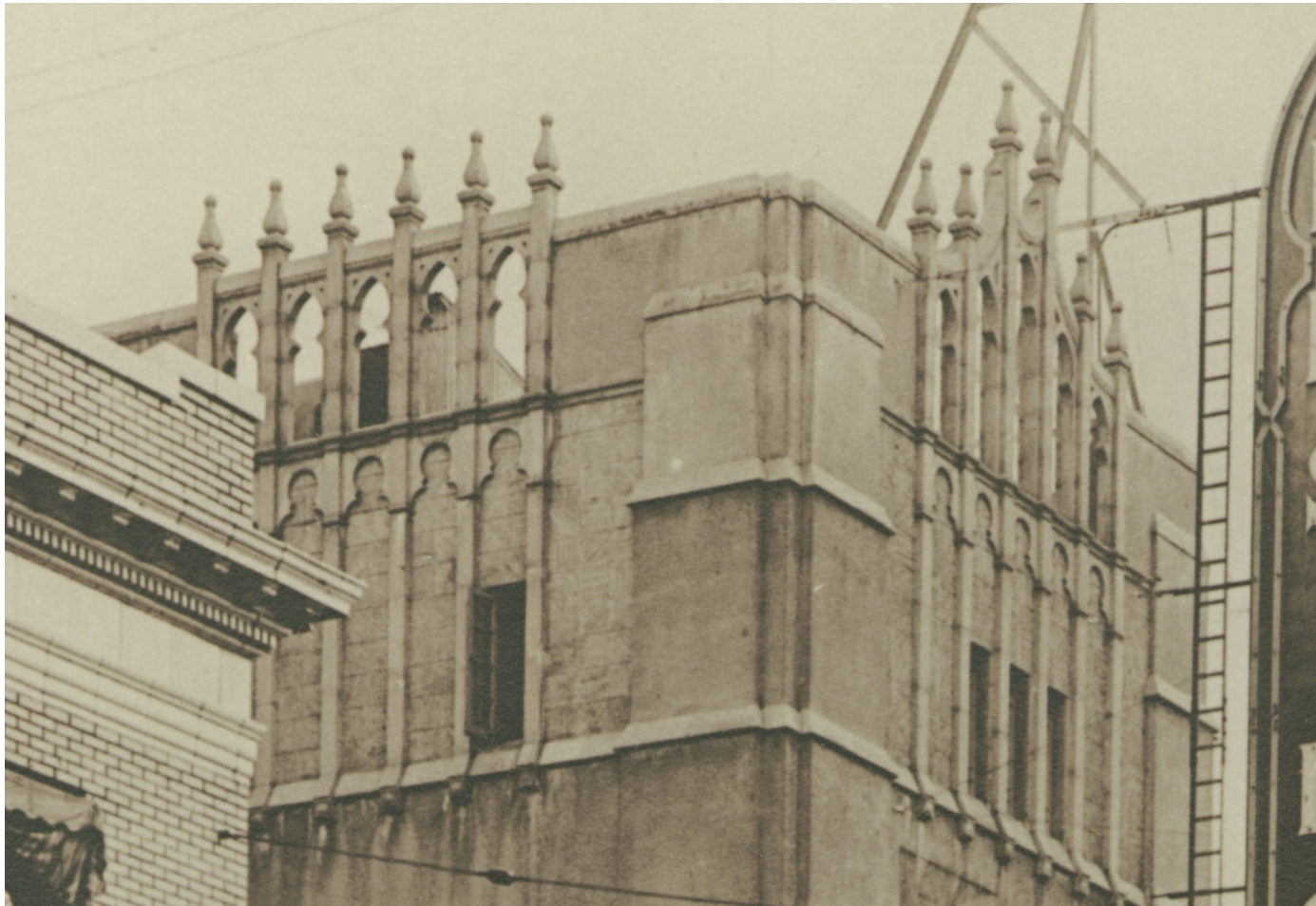
EL SINORE THEATRE Salem, OR

Final Design Feb 20 24

Final Design REV. APRIL 15 24

Final Design REV. JUNE 14 24

Final Design SEPT 1 24

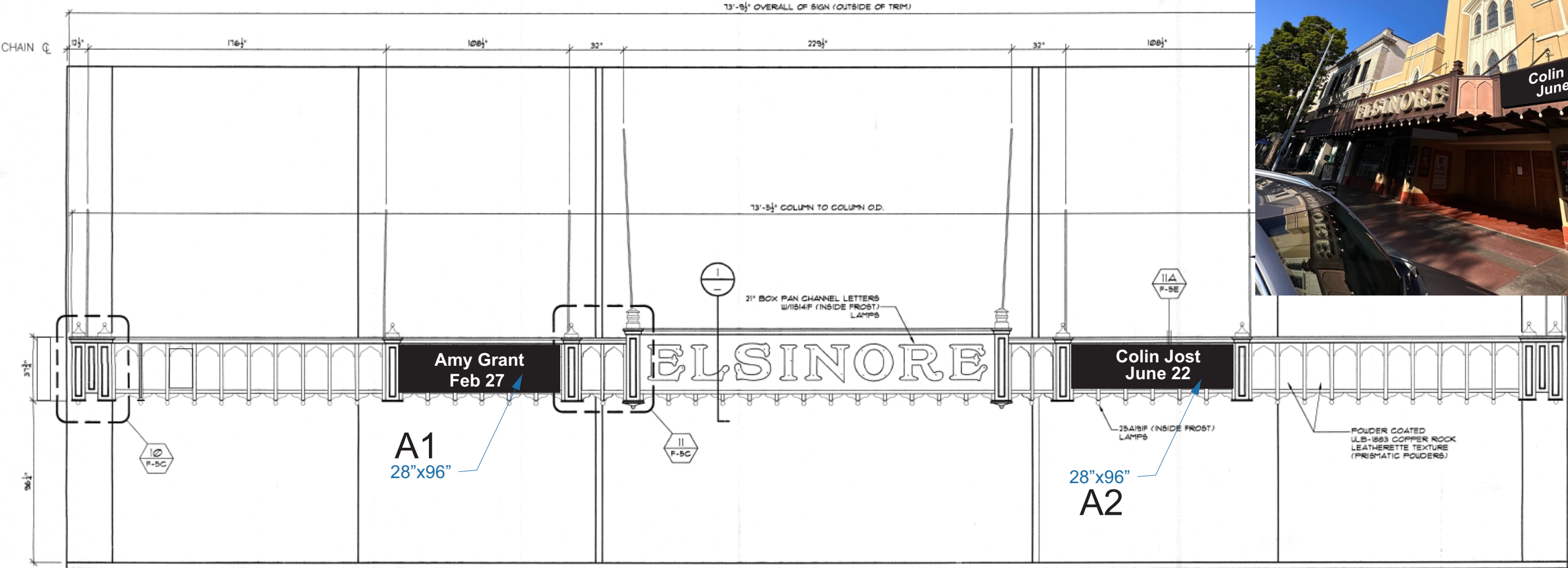


Final Design SEPT 1 24



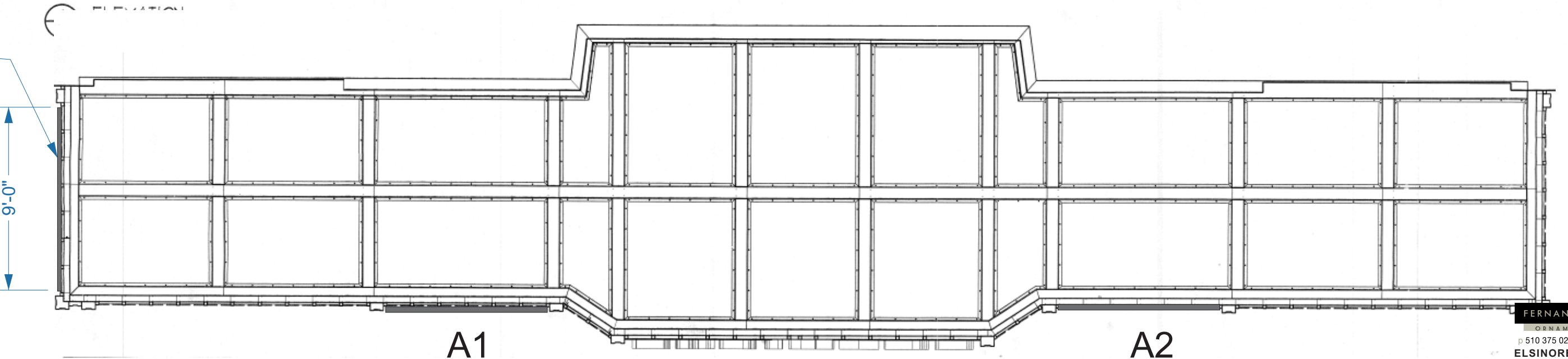
FERNANDO DUARTE DESIGN
ORNAMENTAL ARTS & DESIGN
p 510 375 0263 www.duarteid.com
EL SINORE THEATRE Salem, OR
Final Design Feb 20 24
Final Design REV. APRIL 15 24
Final Design REV. JUNE 14 24

LED DISPLAYS



A3

28"x108"



FERNANDO DUARTE DESIGN

ORNAMENTAL ARTS & DESIGN

p 510 375 0263 www.duarteid.com

EL SINORE THEATRE Salem, OR

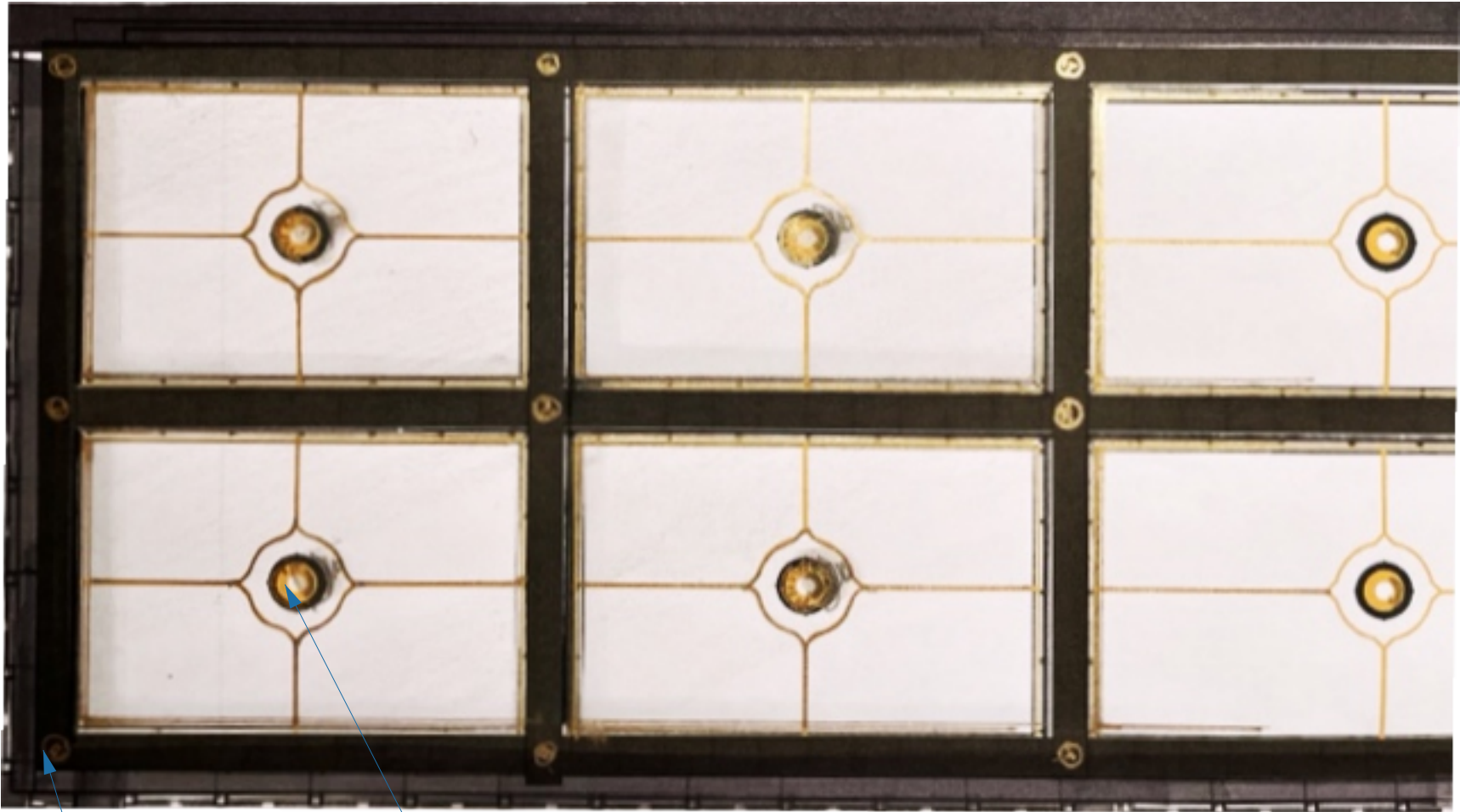
Final Design Feb 20 24

Final Design REV. APRIL 15 24

Final Design REV. JUNE 14 24

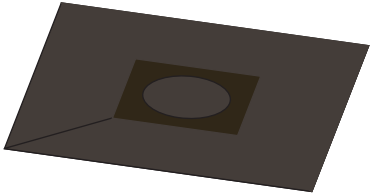
Final Design SEPT 1 24

SOFFIT



4" METAL ROSSETTE
PAINTED DK COPPER

SCHOOL HOUSE
LAMPS



ENTRANCE ELEVATION



FERNANDO DUARTE DESIGN
ORNAMENTAL ARTS & DESIGN

p 510 375 0263 www.duarteid.com

ELSINORE THEATRE Salem, OR
ENTRANCE MAY 28 24
ENTRANCE JUN 6 24
ENTRANCE SEPT 1 24