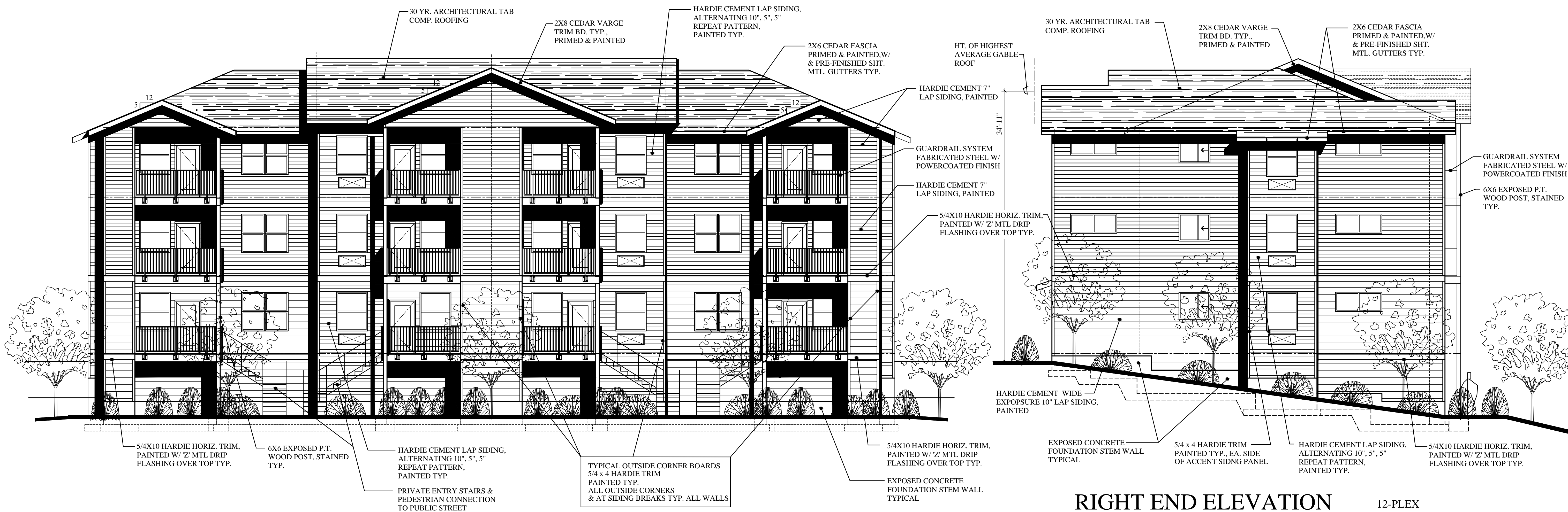


LEFT END ELEVATION 12-PLEX

FRONT ELEVATION 12-PLEX

BLDG. I; BLDG. J similar



REAR ELEVATION 12-PLEX

RIGHT END ELEVATION 12-PLEX

PRELIMINARY  
NOT FOR  
CONSTRUCTION

SCOTT BECK  
ARCHITECT, LLC  
361 N.E. Third Avenue  
Canby, Oregon 97013  
(503) 266-9270

COMPASS POINTS  
MULTIFAMILY HOUSING  
1709 BAXTER RD., S.E.  
SALEM, OREGON  
DEVELOPER:  
NEIGHBORLY VENTURES, INC.  
2595 RIVER ROAD S., SUITE 100  
SALEM, OR 97302, TEL.: (503) 990-8909

12-PLEX  
BLDG. TYPE III  
EXTERIOR  
ELEVATIONS

revisions:  
  
date: 9-10-2024  
scale: 5/32"=1'-0"  
drawn: S.R.B.  
job no: 2406

A5.4A