

From Marion County Historical Society collection – Photo dated 1930

<https://www.salemhistory.net/digital/collection/mchs/id/40/rec/4>

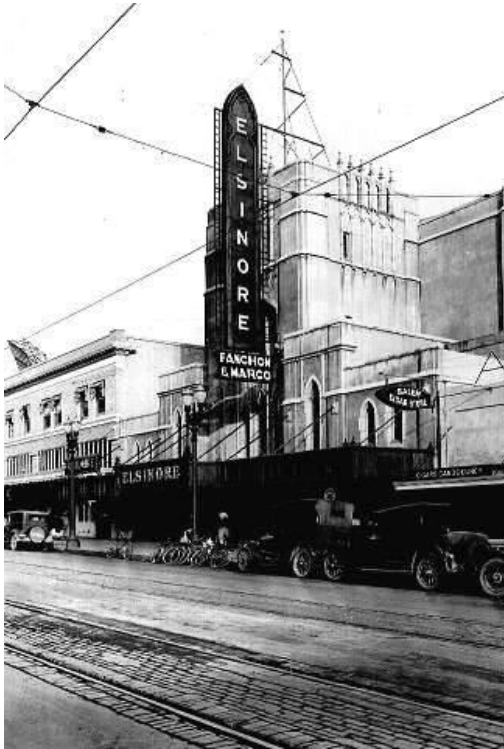


PHOTO ID	MJON0028
TITLE	Elsinore Theater, downtown Salem, Oregon
COLLECTION	Marion County Historical Society
DESCRIPTION	<p>Shown is a picture of the Elsinore Theater around 1930. Cars and bicycles are parked along the side of the street and in front of the theater. Trolley tracks with bricks surrounding them are in the street. The rest of the street seems to be paved. The tall vertical Elsinore sign is attached to the theater with the words Fanchow & Marco beneath it. Lamp posts with two lamps are in front of the theater. A sign by one of the cars reads "Parking, One Hour Limit." Businesses on each side of the theater have signs that say Frigidaire and Salem Cigar Store.</p>
DATE	1930
SUBJECTS	Elsinore Theatre; automobiles; High Street; Salem, Oregon:
PHOTOGRAPHER	unknown
COLLECTOR	Al Jones
OBJECT	b/w photo
DIMENSIONS	IH 6 1/2 inches IW 4 1/4 inches
PHOTO SOURCE	Marion County Historical Society
CREDITS & RESTRICTIONS	Photograph property of the Marion County Historical Society. Copyright restrictions may apply.
REMARKS	Elsinore Theater
IMAGE FILENAME	L:\SERIES_I\ECA719DB.jpg
Date created	2002-10-10
Date modified	2002-10-10
CONTENTdm number	40
CONTENTdm file name	ECA719DB.jpg