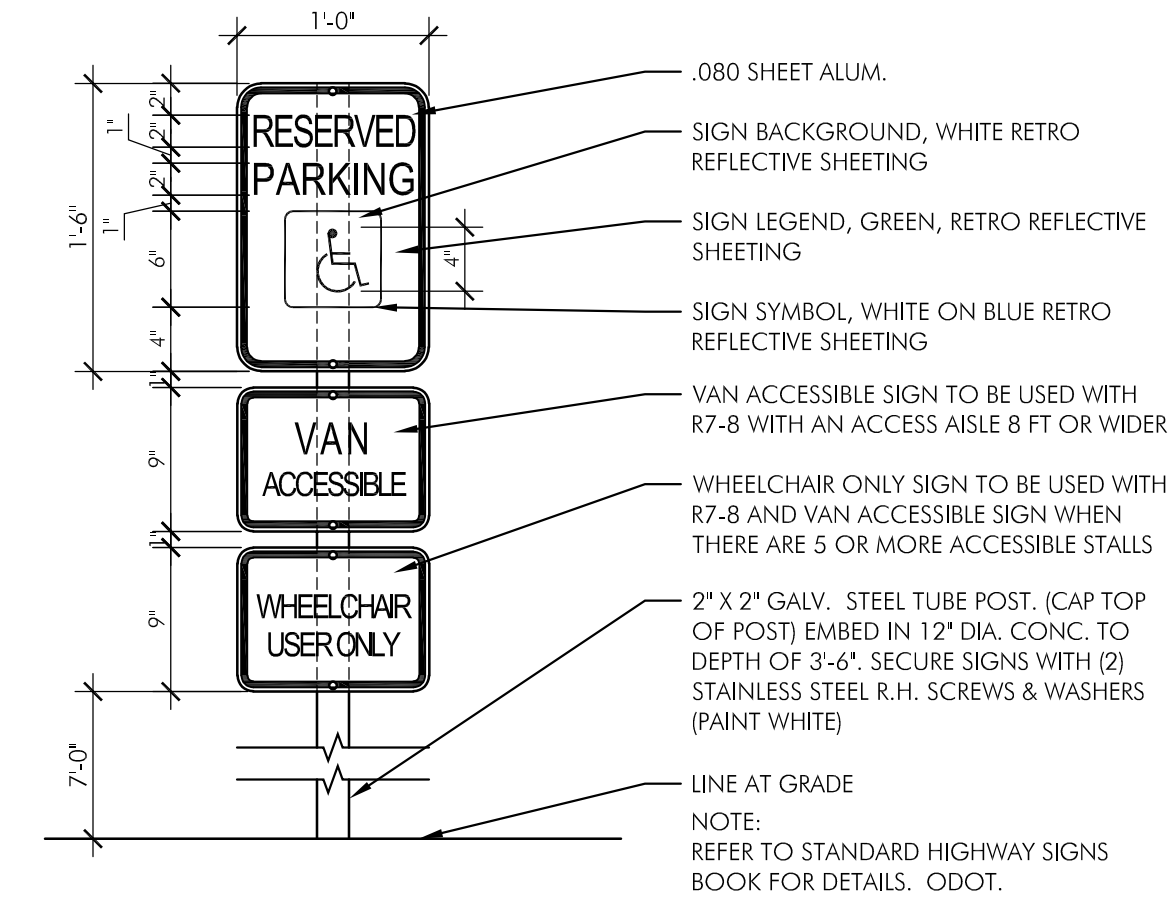
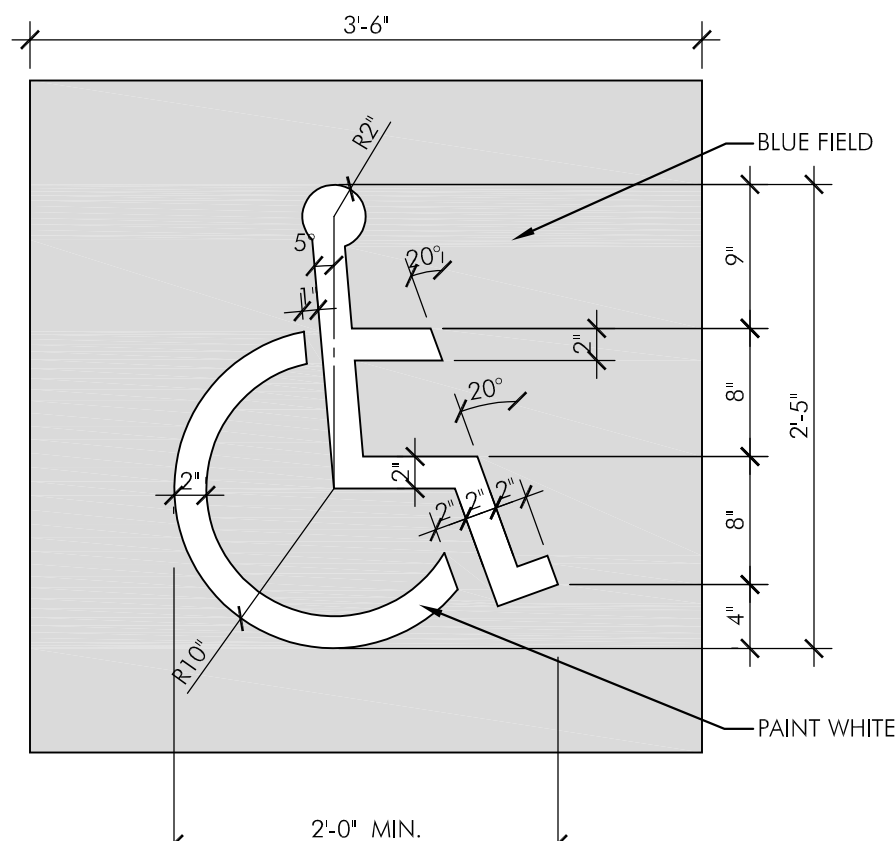


1 DOOR AND FRAME ELEVATIONS

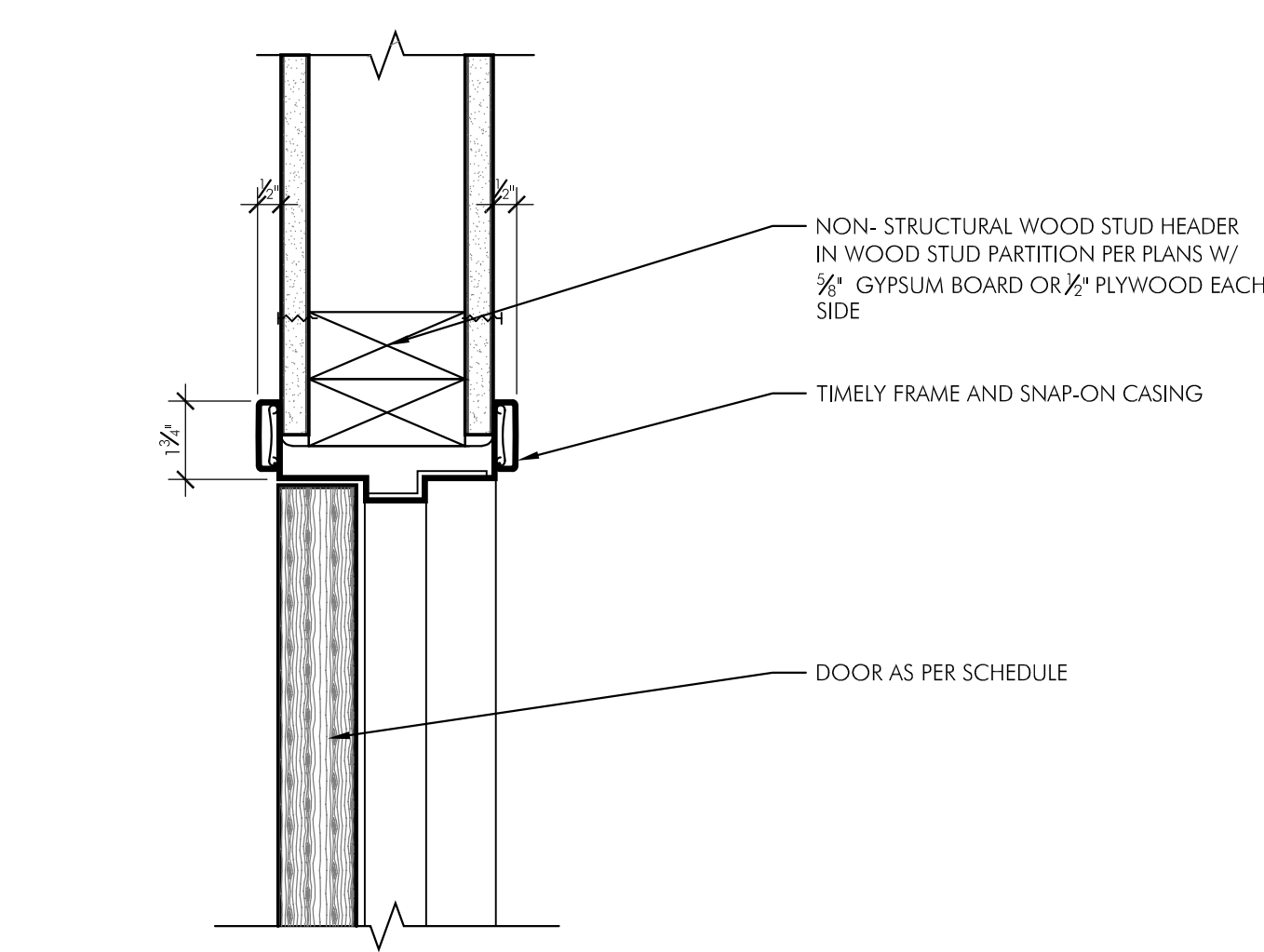
DOOR AND FRAME SCHEDULE											ALL DOORS TO BE 1 1/2" THICK UNLESS OTHERWISE NOTED.		
TYPE:	DOOR				FRAME			DETAILS			HDWR. GROUP	LABEL	REMARKS
	NOMINAL SIZE	TYPE	MATL	GLASS	TYPE	MATL	GLASS	H	J	S			
DR 100A	10'-0" x 12'-0"	--	MTL	--	--	--	--	--	--	--	--	--	--
DR 100B	3'-0" x 6'-8"	D-1	MTL	--	F-2	MTL	--	--	--	--	HW-5	--	--
DR 100C	18'-0" x 60'-0"	--	MTL	--	--	--	--	--	--	--	--	--	--
DR 101	3'-0" x 6'-8"	D-1	WD	--	F-1	MTL	-	2/A4	3/A4	--	HW-3	--	



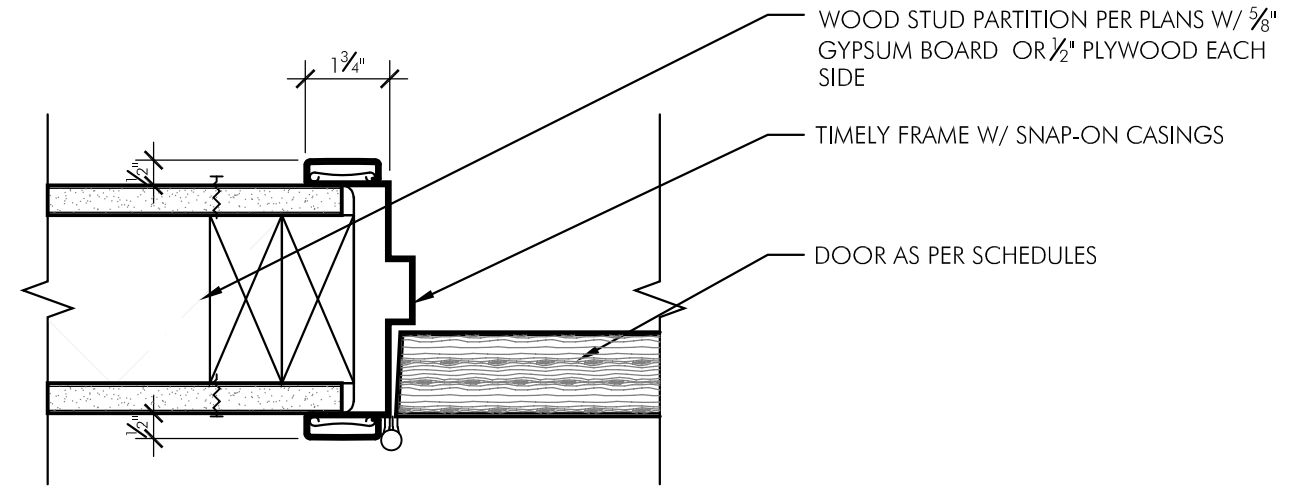
4 ACCESSIBLE PARKING SIGN DETAIL R7-8



3 HANDICAPPED PARKING SYMBOL DETAIL

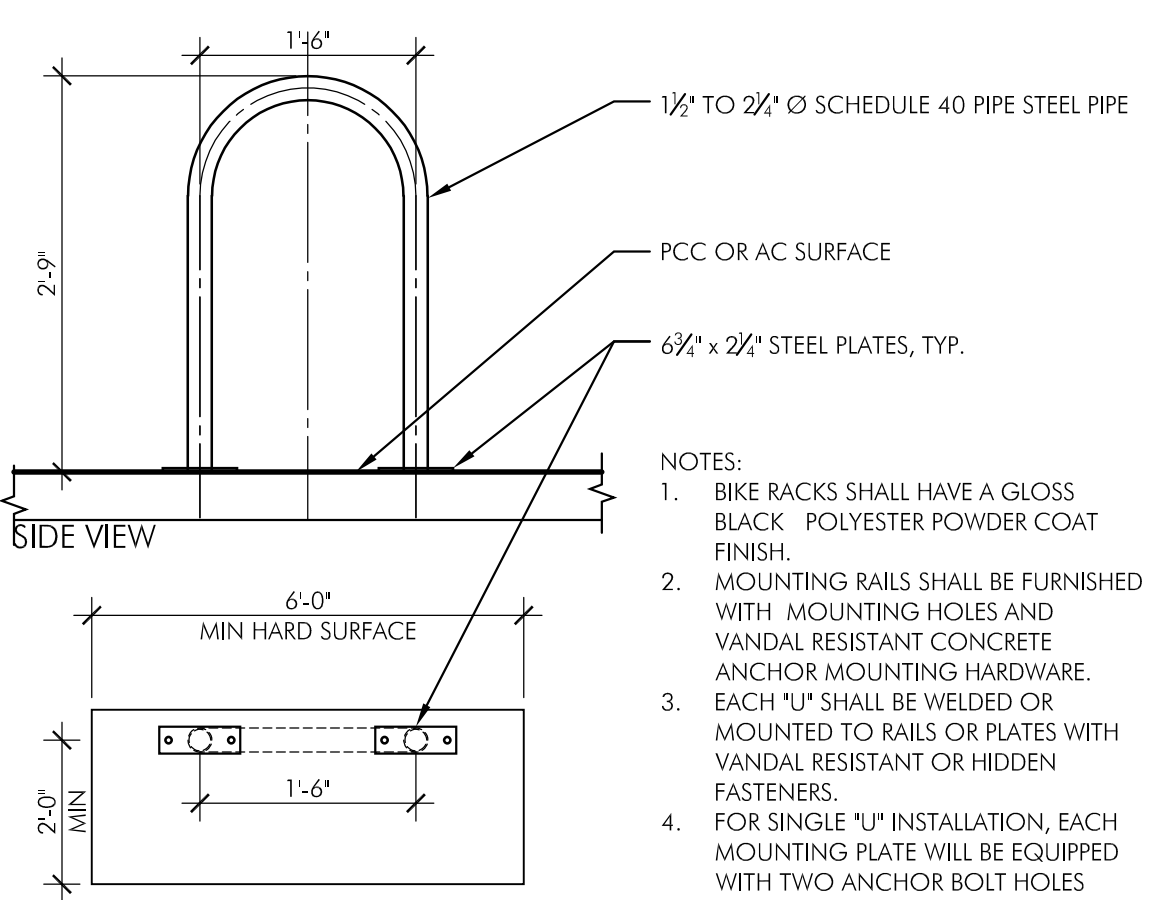


2 TYPICAL WOOD HEAD DETAIL



3 TYPICAL WOOD JAMB DETAIL

DOOR HARDWARE SCHEDULE:													
HW-3							HW-5						
1	OCCUPANCY SENSOR						1	OFFICE LOCKSET					
1	PASS THRU LEVER HANDLES						1	LEVER HANDLES					
1 1/2	PAIR HINGES						1 1/2	PAIR HINGES					
1	DOOR STOP						1	DOOR STOP					
1	FRAME SILENCERS						1	SMOKE SEAL CLOSER					



6 "INVERTED U" BIKE RACK DETAIL

IN THE EVENT CONFLICTS ARE DISCOVERED BETWEEN THE ORIGINAL SIGNED AND SEALED DOCUMENTS PREPARED BY THE ARCHITECTS AND/OR THEIR CONSULTANTS, AND ANY COPY OF THE DOCUMENTS TRANSMITTED BY MAIL, FAX, ELECTRONICALLY OR OTHERWISE, THE ORIGINAL SIGNED AND SEALED DOCUMENTS SHALL GOVERN.

PROJECT # 2024-125
DATE: 18 SEPT 2024
REVISIONS

NEW BUILDING :
AIRPLANE HANGER
3980 AIRWAY DRIVE, SALEM, OREGON