

# 280 CHURCH ST. NE SALEM, OR

## PROJECT SUMMARY

ZONING: CB (CENTRAL BUSINESS DISTRICT)

ASSESSOR'S MAP TAX LOT NUMBER:  
073W27AA02000

PROPERTY SIZE: 1.26 ACRES

COMPREHENSIVE PLAN:  
CENTRAL BUSINESS DISTRICT

OVERLAY ZONES: NONE

SEPTEMBER 17, 2024

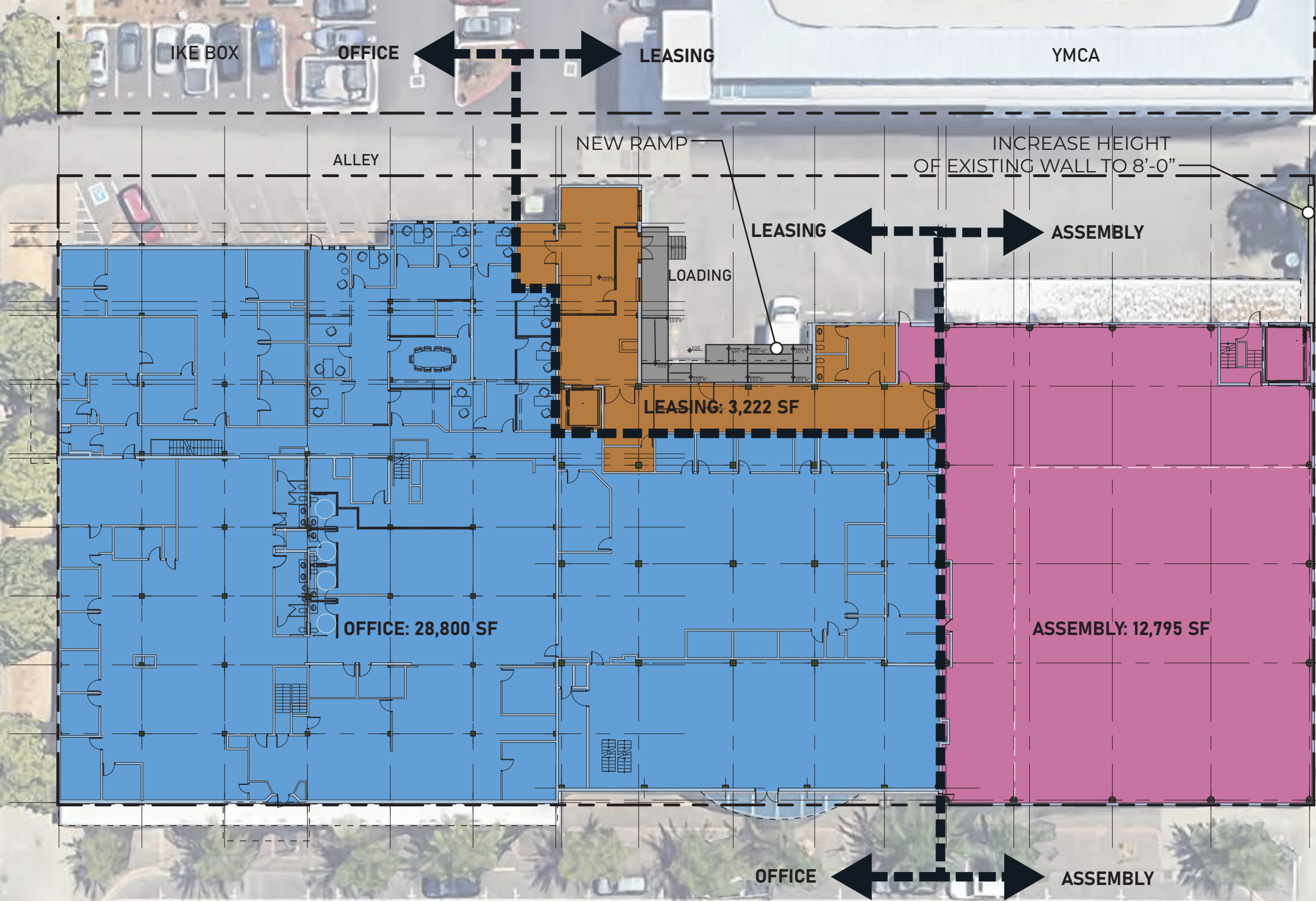
SITE PLAN REVIEW PACKAGE

CS



CHEMEKETA ST. NE

COURT ST. NE



STORAGE AREAS:	
1ST FLOOR TOTAL:	3,222 SF +/-
MEZZANINE:	0 SF +/-
<u>BASEMENT:</u>	<u>44,380 SF +/-</u>
<u>TOTAL STORAGE:</u>	<u>47,602 SF +/-</u>

## CONCEPTUAL MAIN LEVEL FLOOR PLAN

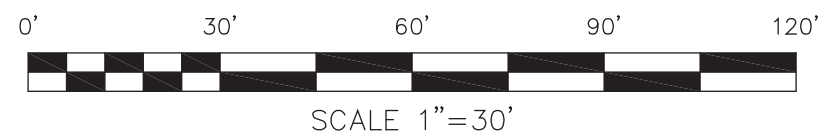
0' 30' 60' 90' 120'



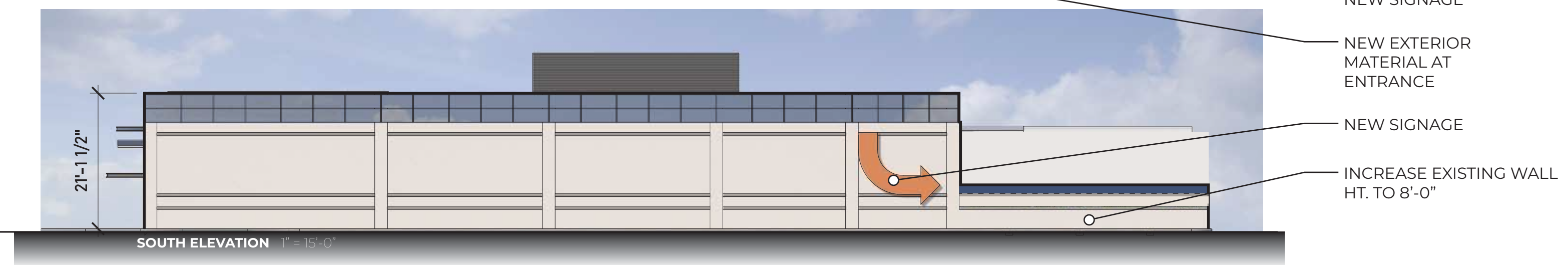
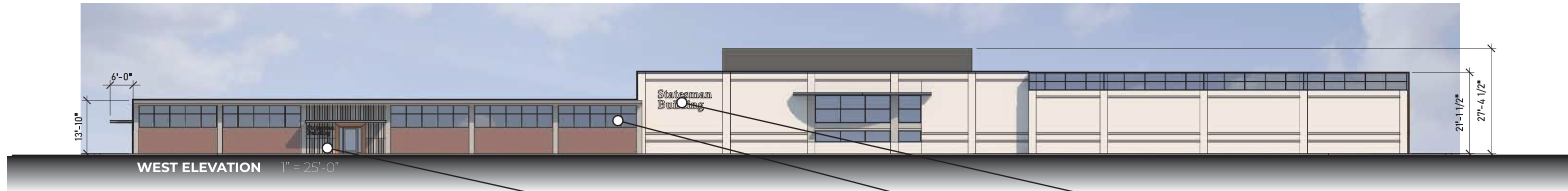
SCALE 1"=30'



# CONCEPTUAL BASEMENT LEVEL FLOOR PLAN







- NEW SIGNAGE
- REPLACE EXISTING STOREFRONT (TYP.)
- NEW EXTERIOR MATERIAL AT ENTRANCE
- PAINT FASCIA TO MATCH NEW STOREFRONT
- REPLACE EXISTING STOREFRONT (TYP.)
- NEW SIGNAGE
- NEW EXTERIOR MATERIAL AT ENTRANCE
- NEW SIGNAGE
- INCREASE EXISTING WALL HT. TO 8'-0"



















