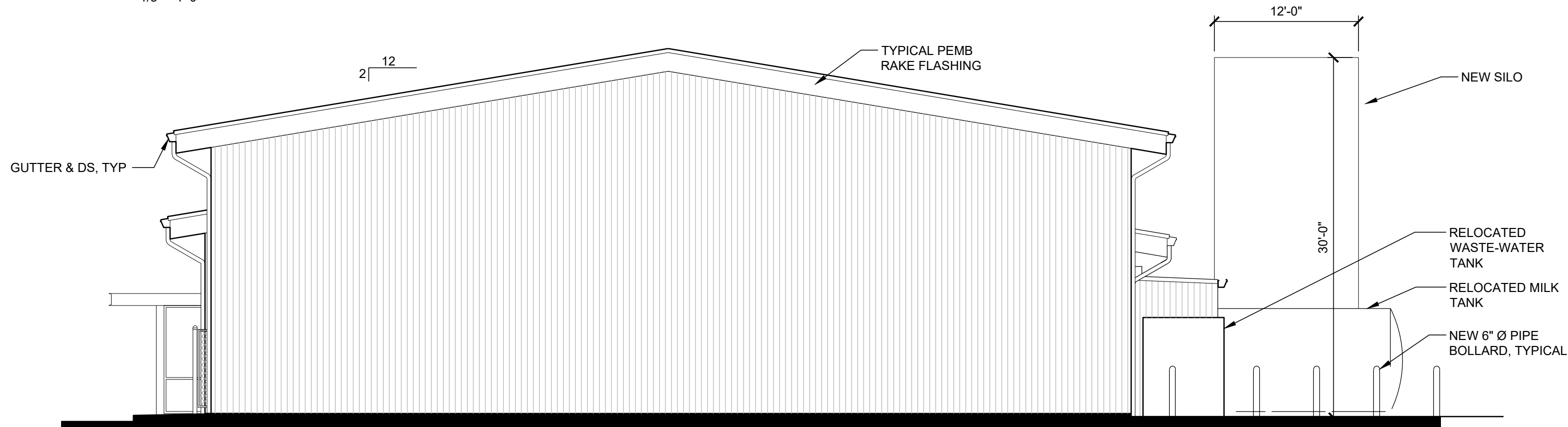


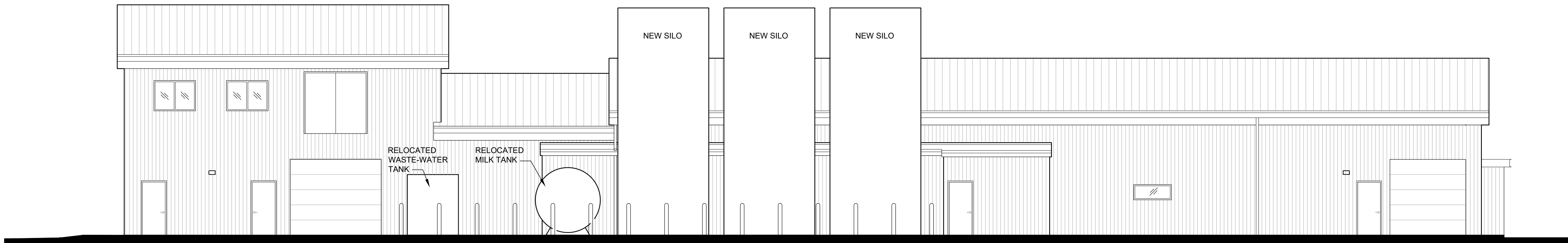
WEST ELEVATION

1/8" = 1'-0"



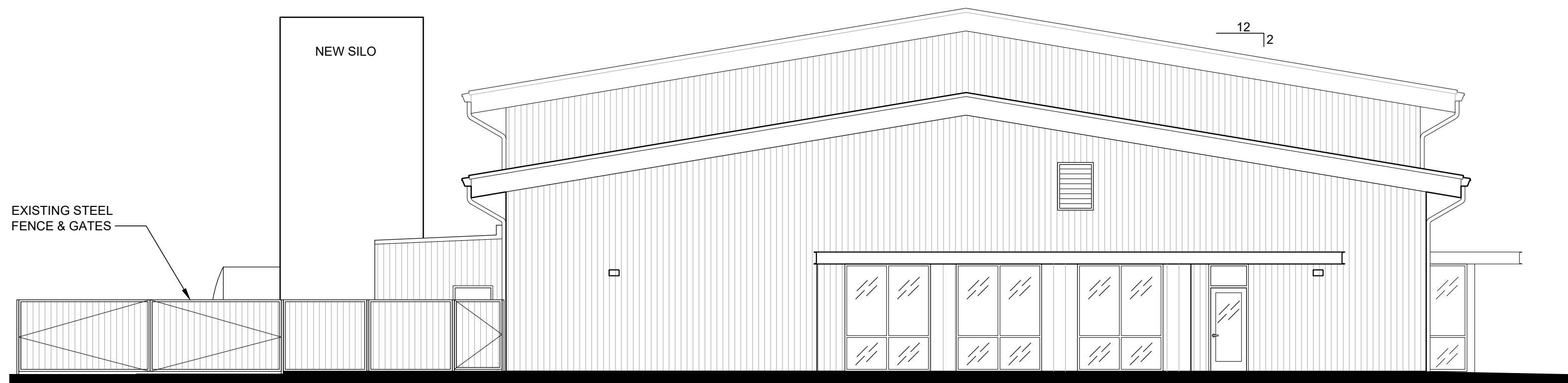
SOUTH ELEVATION

1/8" = 1'-0"



EAST ELEVATION

1/8" = 1'-0"



NORTH ELEVATION

1/8" = 1'-0"

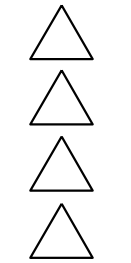
PRELIMINARY
NOT FOR CONSTRUCTION

PRELIMINARY DATE:
08-13-2024

project:
DON FROYLAN CREAMERY
BUILDING ADDITION
3310 PORTLAND ROAD NE
SALEM, OR 97301

consultants:

revisions:



date:

project: P0224

dwg file: A-201-P0224

drawn by: PK

checked by: NW

copyright © 2024
Carlson Veit Architects P.C.

BUILDING
ELEVATIONS

sheet:

A-201

of: