

CONSTRUCTION NOTES

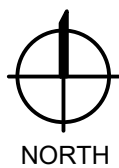
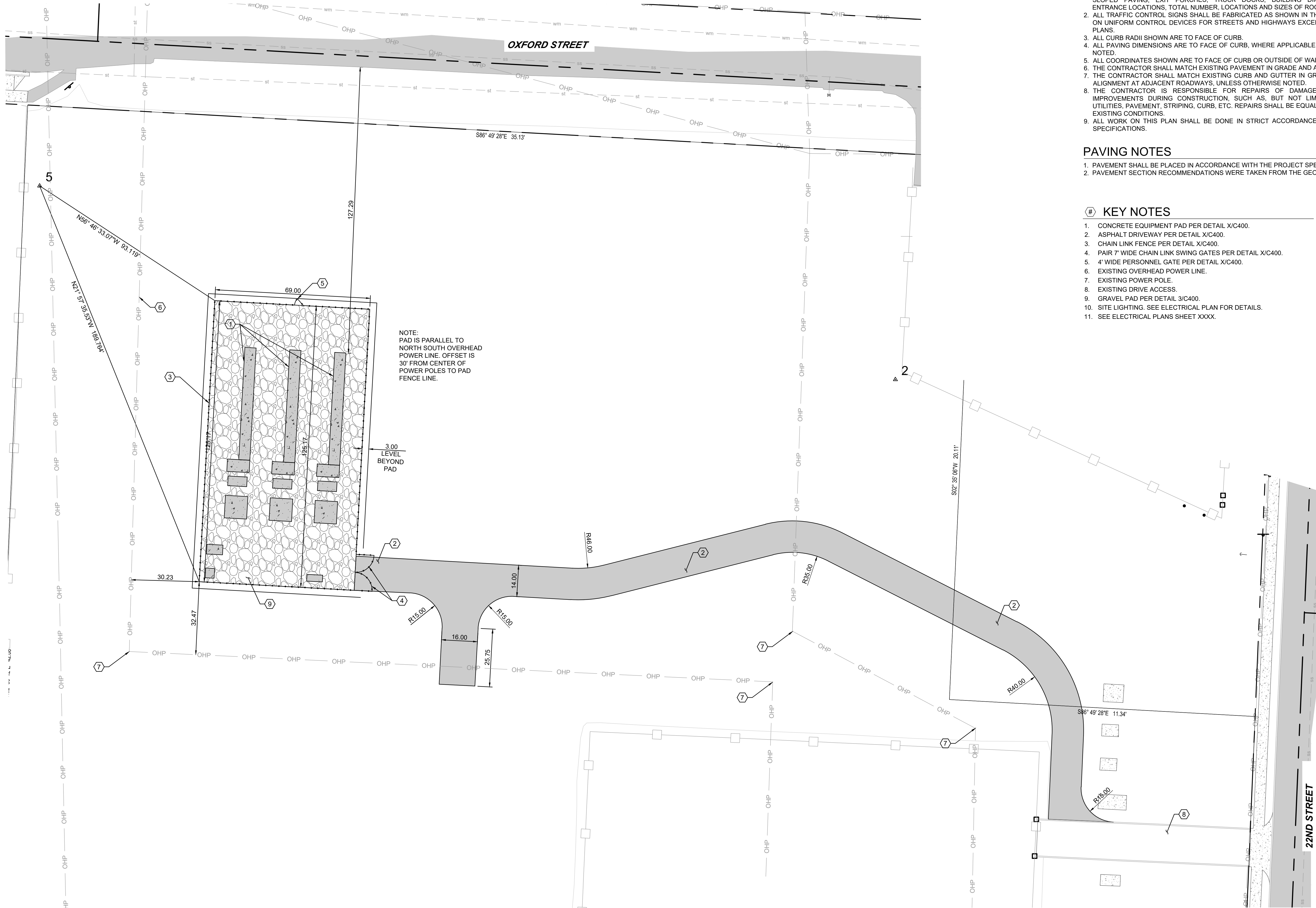
1. THE CONTRACTOR SHALL REFER TO BUILDING PLANS FOR LOCATION AND DIMENSIONS OF SLOPED PAVING, EXIT PORCHES, TRUCK DOCKS, BUILDING DIMENSIONS, BUILDING ENTRANCE LOCATIONS, TOTAL NUMBER, LOCATIONS AND SIZES OF ROOF DOWNSPOUTS.
2. ALL TRAFFIC CONTROL SIGNS SHALL BE FABRICATED AS SHOWN IN THE NATIONAL MANUAL ON UNIFORM CONTROL DEVICES FOR STREETS AND HIGHWAYS EXCEPT AS NOTED ON THE PLANS.
3. ALL CURB RADII SHOWN ARE TO FACE OF CURB.
4. ALL PAVING DIMENSIONS ARE TO FACE OF CURB, WHERE APPLICABLE, UNLESS OTHERWISE NOTED.
5. ALL COORDINATES SHOWN ARE TO FACE OF CURB OR OUTSIDE OF WALL.
6. THE CONTRACTOR SHALL MATCH EXISTING PAVEMENT IN GRADE AND ALIGNMENT.
7. THE CONTRACTOR SHALL MATCH EXISTING CURB AND GUTTER IN GRADE, SIZE, TYPE AND ALIGNMENT AT ADJACENT ROADWAYS, UNLESS OTHERWISE NOTED.
8. THE CONTRACTOR IS RESPONSIBLE FOR REPAIRS OF DAMAGE TO ANY EXISTING IMPROVEMENTS DURING CONSTRUCTION, SUCH AS, BUT NOT LIMITED TO, DRAINAGE, UTILITIES, PAVEMENT, STRIPING, CURB, ETC. REPAIRS SHALL BE EQUAL TO OR BETTER THAN EXISTING CONDITIONS.
9. ALL WORK ON THIS PLAN SHALL BE DONE IN STRICT ACCORDANCE WITH THE PROJECT SPECIFICATIONS.

PAVING NOTES

1. PAVEMENT SHALL BE PLACED IN ACCORDANCE WITH THE PROJECT SPECIFICATIONS.
2. PAVEMENT SECTION RECOMMENDATIONS WERE TAKEN FROM THE GEOTECHNICAL REPORT.

KEY NOTES

1. CONCRETE EQUIPMENT PAD PER DETAIL X/C400.
2. ASPHALT DRIVEWAY PER DETAIL X/C400.
3. CHAIN LINK FENCE PER DETAIL X/C400.
4. PAIR 7' WIDE CHAIN LINK SWING GATES PER DETAIL X/C400.
5. 4' WIDE PERSONNEL GATE PER DETAIL X/C400.
6. EXISTING OVERHEAD POWER LINE.
7. EXISTING POWER POLE.
8. EXISTING DRIVE ACCESS.
9. GRAVEL PAD PER DETAIL 3/C400.
10. SITE LIGHTING: SEE ELECTRICAL PLAN FOR DETAILS.
11. SEE ELECTRICAL PLANS SHEET XXXX.



1 SITE PLAN
C101

0 10 20 40
SCALE: 1" = 20'

NOT FOR CONSTRUCTION - PRELIMINARY DESIGN

SALEM, OREGON
PORTLAND GENERAL ELECTRIC
PGE SALEM BESS

© 2020 | ALL RIGHTS RESERVED

SCHEMATIC DESIGN

06.10.2024
PROJECT | PORTGEN_SALEM
DESIGNED BY | DAA
DRAWN BY | DAA
REVIEWED BY |
REVISIONS

SITE PLAN

C101