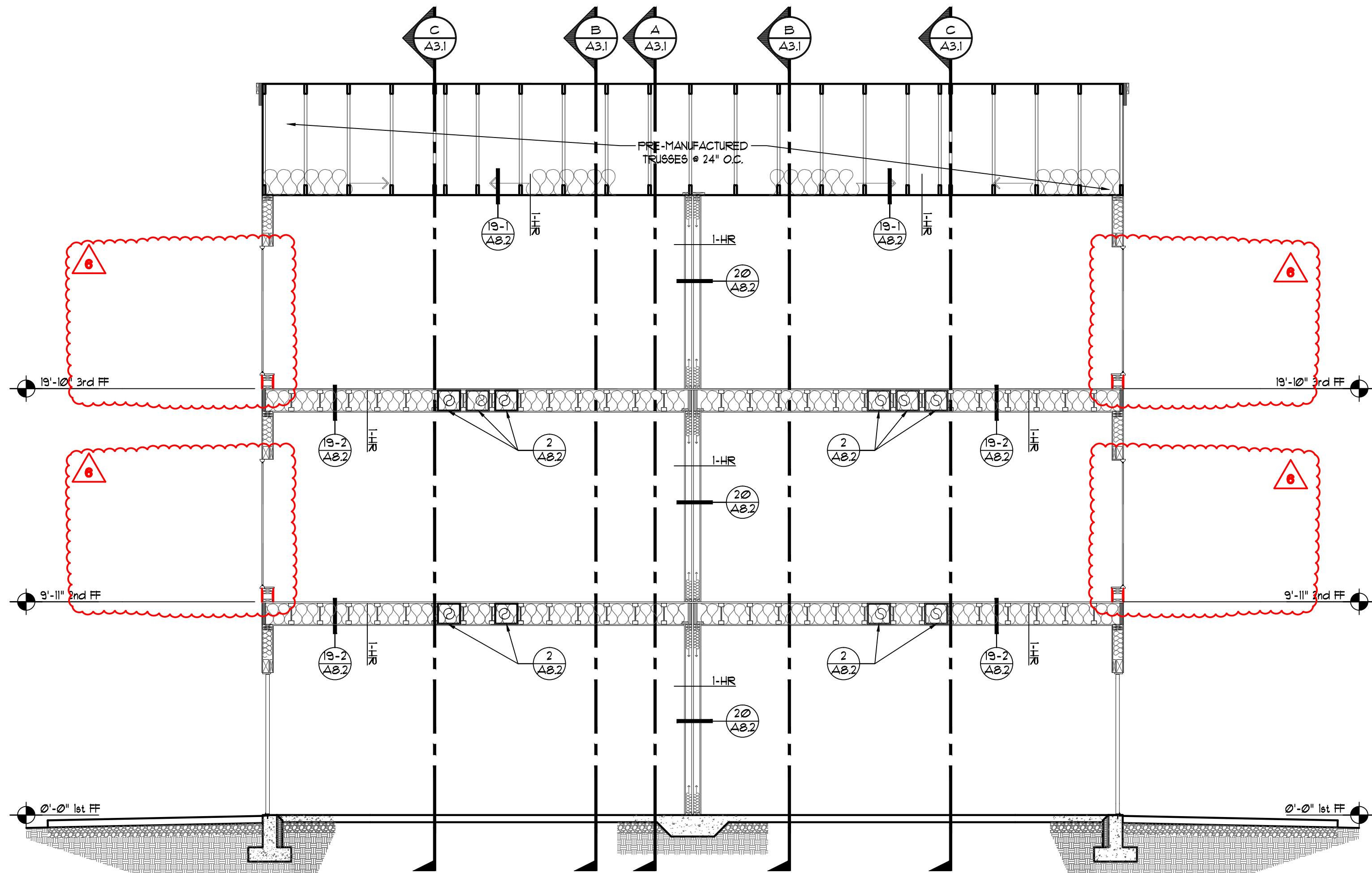
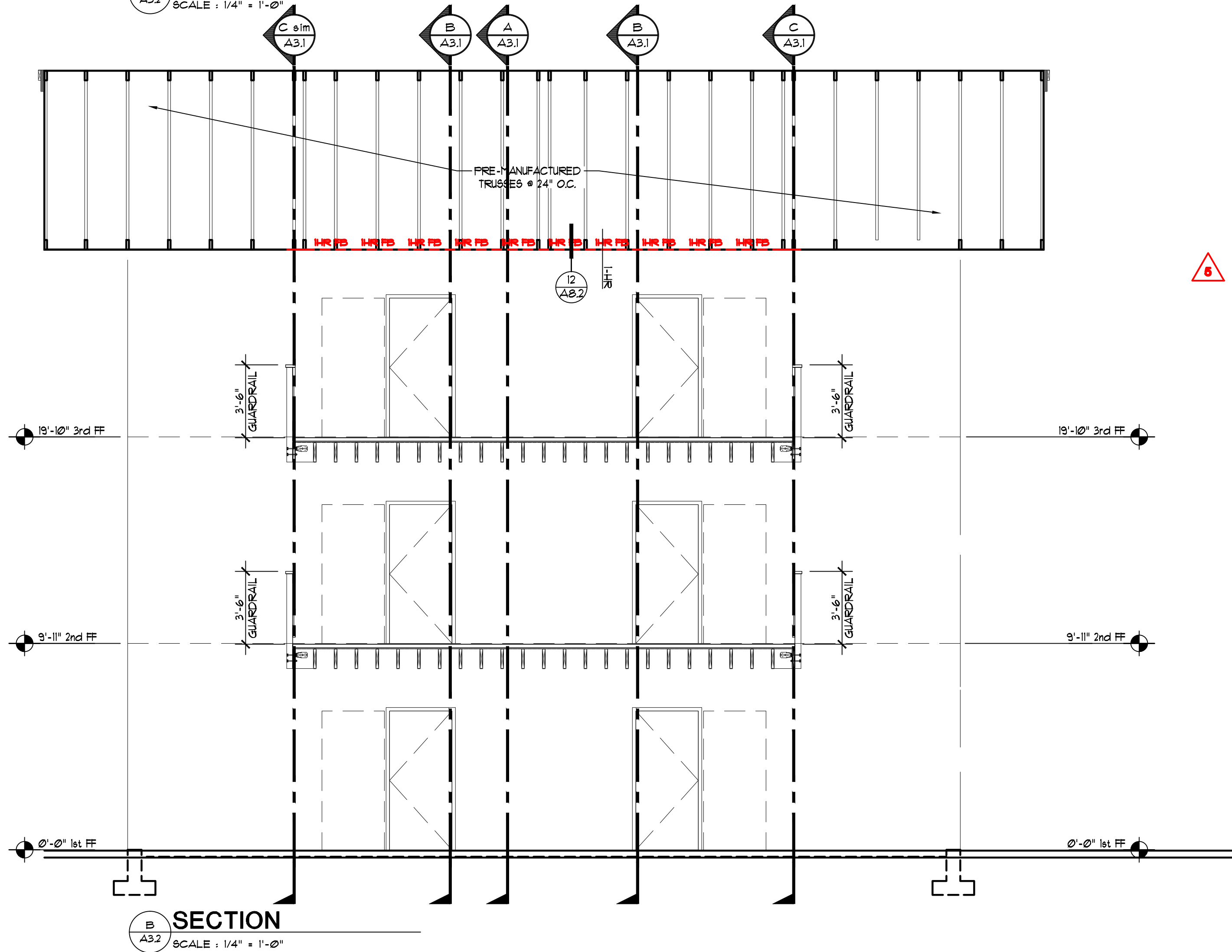


LAST SAVED: Mon, 15 Jul 2024 - 04:54 pm
PRINTED: Mon, 15 Jul 2024 - 05:02 pm

LOCATION: C:\Users\trevo\appdata\local\temp\AcPublish_4156\A2_1_BldgA-1341.dwg
PRINTED BY: trevo



SECTION
A3.1
SCALE: 1/4" = 1'-0"



SECTION
A3.2
SCALE: 1/4" = 1'-0"

TYPICAL ROOF CONSTRUCTION
ARCHITECTURAL SHINGLES
15-LB ROOFING FELT
PLYWOOD
PRE-MANUFACTURED TRUSSES @ 24" O.C.
R-49 BATT INSULATION
1-HR CEILING ASSEMBLY PER 19/A81
- AT UNITS INDICATED CORRIDOR SEE A23
SOFFIT PANEL AT EXTERIOR (NOT CORRIDOR)

TYPICAL EXTERIOR WALL CONSTRUCTION
HARDIE PLANK SIDING
WRB
PLYWOOD
2x6 STUD @ 16" O.C. w/ BLK @ MIDPOINT OF STUD
R-21 BATT INSULATION
5/8" GYP. BD.

TYPICAL 2ND AND 3RD FLOOR CONSTRUCTION - AT UNITS
3/4" GYPCRETE TOPPING
PLYWOOD
11-1/8 TJI'S
1-HR CEILING ASSEMBLY PER 19/A81

TYPICAL INTERIOR WALL CONSTRUCTION
5/8" GYP. BD.
2x STUDS @ 16" O.C. w/ BLOCKING
@ MIDPOINT OF STUD
BATT INSULATION FOR SOUND
5/8" GYP. BD.

TYPICAL 1ST FLOOR CONSTRUCTION
4" CONCRETE SLAB
6 MIL VAPOR BARRIER
6" COMPACTED GRAVEL 3/4" MINUS CRUSHED ROCK
R-15 SLAB EDGE INSULATION FOR 24"

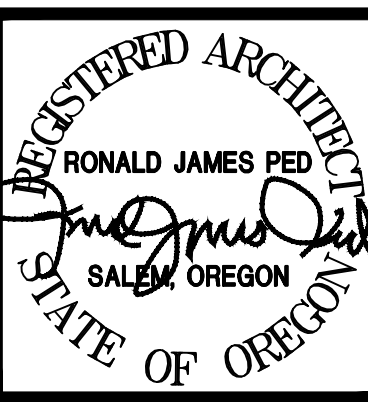
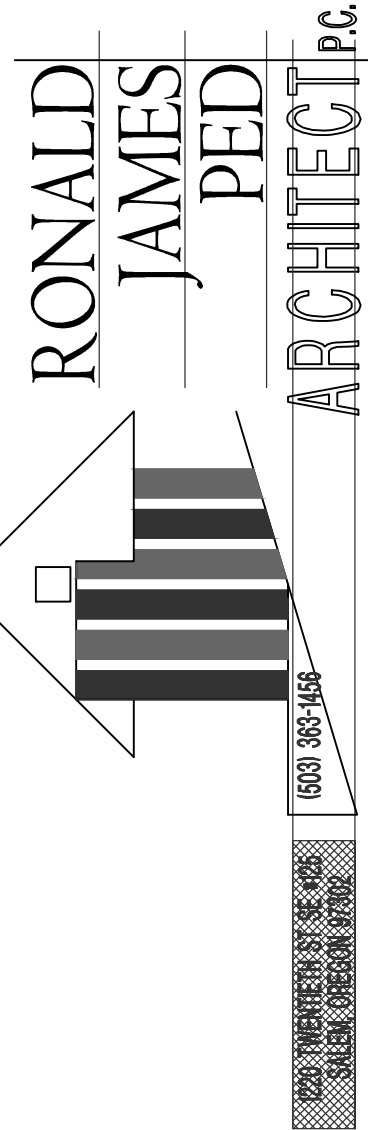
TYPICAL ROOF CONSTRUCTION
ARCHITECTURAL SHINGLES
15-LB ROOFING FELT
PLYWOOD
PRE-MANUFACTURED TRUSSES @ 24" O.C.
R-49 BATT INSULATION
1-HR CEILING ASSEMBLY PER 19/A81
- AT UNITS INDICATED CORRIDOR SEE A23
SOFFIT PANEL AT EXTERIOR (NOT CORRIDOR)

TYPICAL EXTERIOR WALL CONSTRUCTION
HARDIE PLANK SIDING
WRB
PLYWOOD
2x6 STUD @ 16" O.C. w/ BLK @ MIDPOINT OF STUD
R-21 BATT INSULATION
5/8" GYP. BD.

TYPICAL 2ND AND 3RD FLOOR CONSTRUCTION - AT UNITS
3/4" GYPCRETE TOPPING
PLYWOOD
11-1/8 TJI'S
1-HR CEILING ASSEMBLY PER 19/A81

TYPICAL INTERIOR WALL CONSTRUCTION
5/8" GYP. BD.
2x STUDS @ 16" O.C. w/ BLOCKING
@ MIDPOINT OF STUD
BATT INSULATION FOR SOUND
5/8" GYP. BD.

TYPICAL 1ST FLOOR CONSTRUCTION
4" CONCRETE SLAB
6 MIL VAPOR BARRIER
6" COMPACTED GRAVEL 3/4" MINUS CRUSHED ROCK
R-15 SLAB EDGE INSULATION FOR 24"



1. 13 MARCH 2023
6/FR COMMENTS
2. 9 FEB. 2024
CITY OF SALEM COMMENTS
3. 9 FEB. 2024
REVIEW COMMENTS
4. 28 MAR. 2024
CITY OF SALEM COMMENTS
5. 14 JUNE 2024
EXPRESS STAIR CHANGE
6. 3 JULY 2024
CHANGE OFFICE TO STUDIO 4/F
4 REMOVAL OF STUDIO BALCONIES

NEW APARTMENTS FOR
Waller St SE
1349 Waller St Salem, Or

DATE: 20 APRIL 2022
DRAWN:
JOB NO.: 2207

A3.2

CONSTRUCTION SET 04.29.2024