

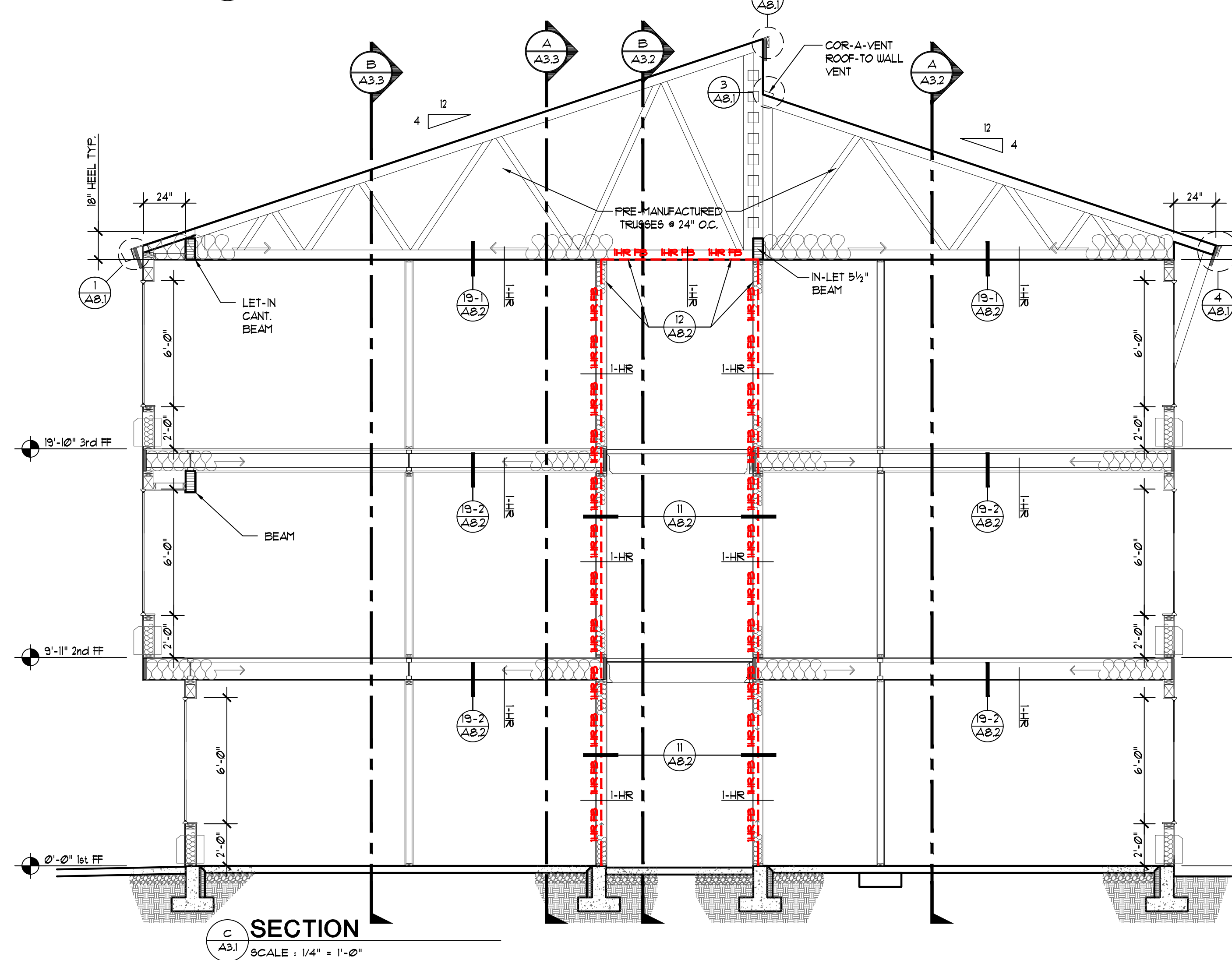
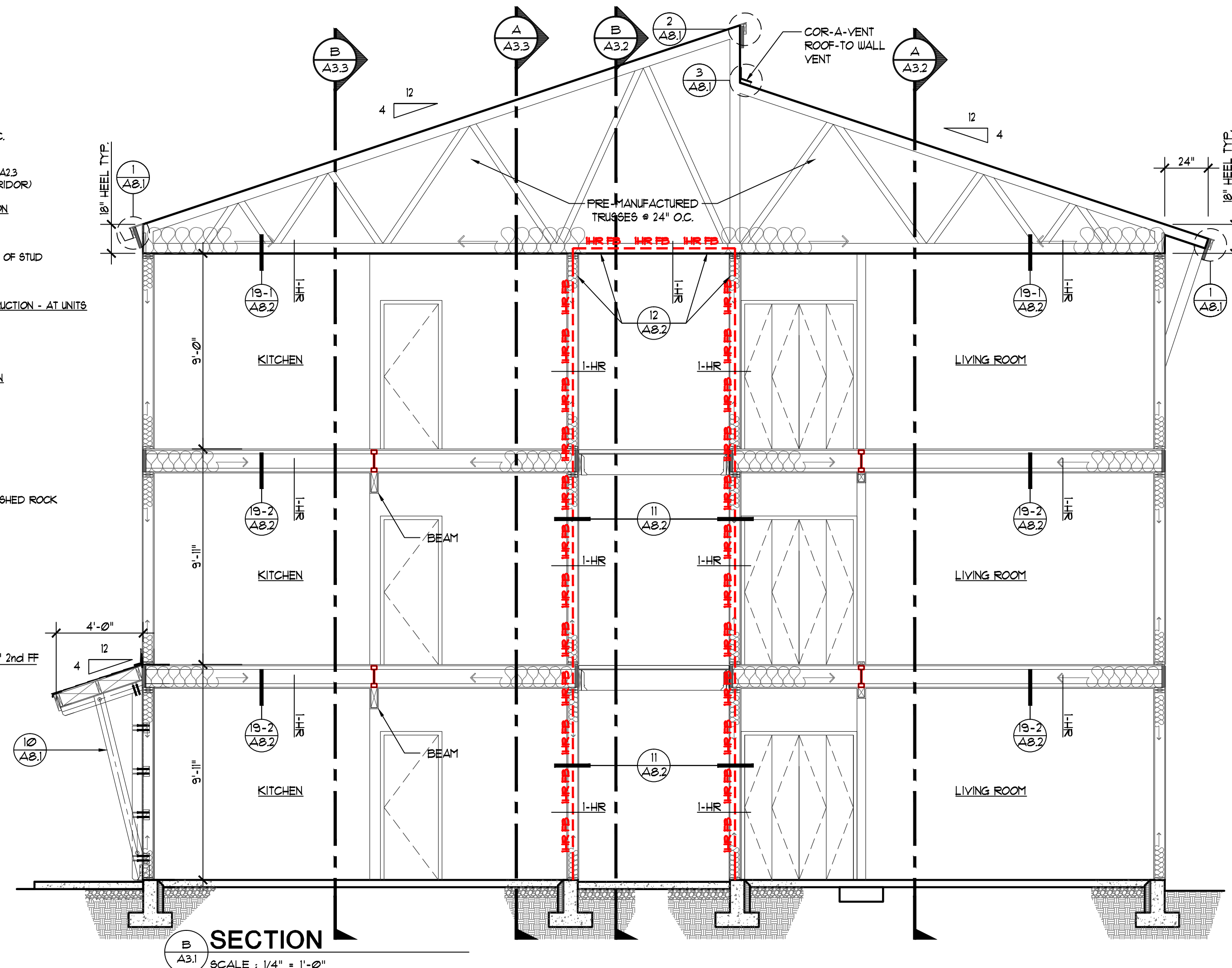
TYPICAL ROOF CONSTRUCTION
ARCHITECTURAL SHINGLES
B-LB ROOFING FELT
PLYWOOD
PRE-MANUFACTURED TRUSSES # 24" O.C.
R-49 BATT INSULATION
LHR CEILING ASSEMBLY PER 19/A81
- AT UNITS INDICATED CORRIDOR SEE A23
SOFFIT PANEL AT EXTERIOR (NOT CORRIDOR)

TYPICAL EXTERIOR WALL CONSTRUCTION
HARDIE PLANK SIDING
URS
FLYWOOD
2x6 STUD # 16" O.C. W/ BLK # MIDPOINT OF STUD
R-21 BATT INSULATION
5/8" GYP. BD.

TYPICAL 2ND AND 3RD FLOOR CONSTRUCTION - AT UNITS
3/4" GYPCRETE TOPPING
PLYWOOD
11-7/8 TJI'S
LHR CEILING ASSEMBLY PER 19/A81

TYPICAL INTERIOR WALL CONSTRUCTION
5/8" GYP. BD.
2x STUDS # 16" O.C. W/ BLOCKING
MIDPOINT OF STUD
BATT INSULATION FOR SOUND
5/8" GYP. BD.

TYPICAL 1ST FLOOR CONSTRUCTION
4" CONCRETE SLAB
6 MIL VAPOR BARRIER
6" COMPACTED GRAVEL 3/4" MINUS CRUSHED ROCK
R-5 SLAB EDGE INSULATION FOR 24"



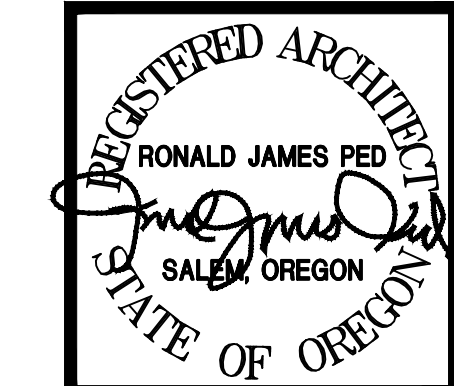
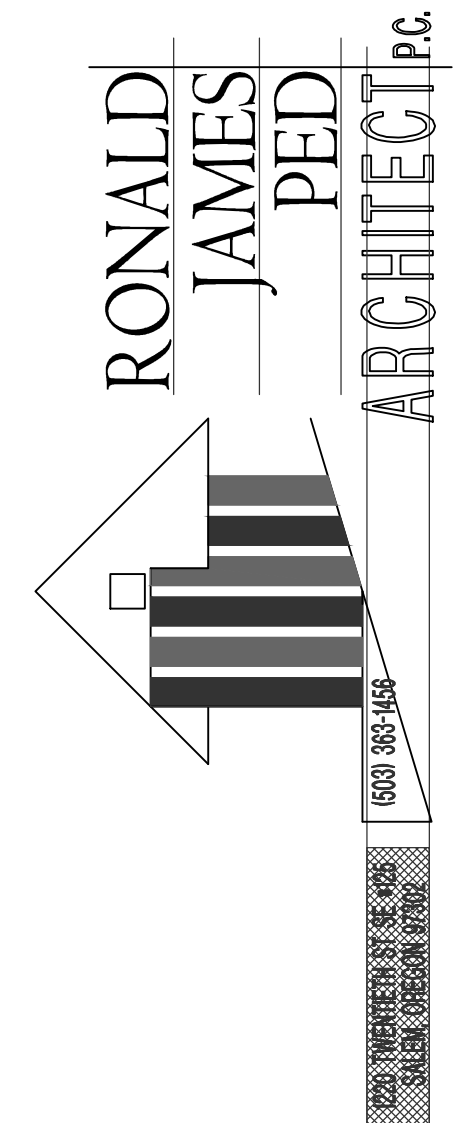
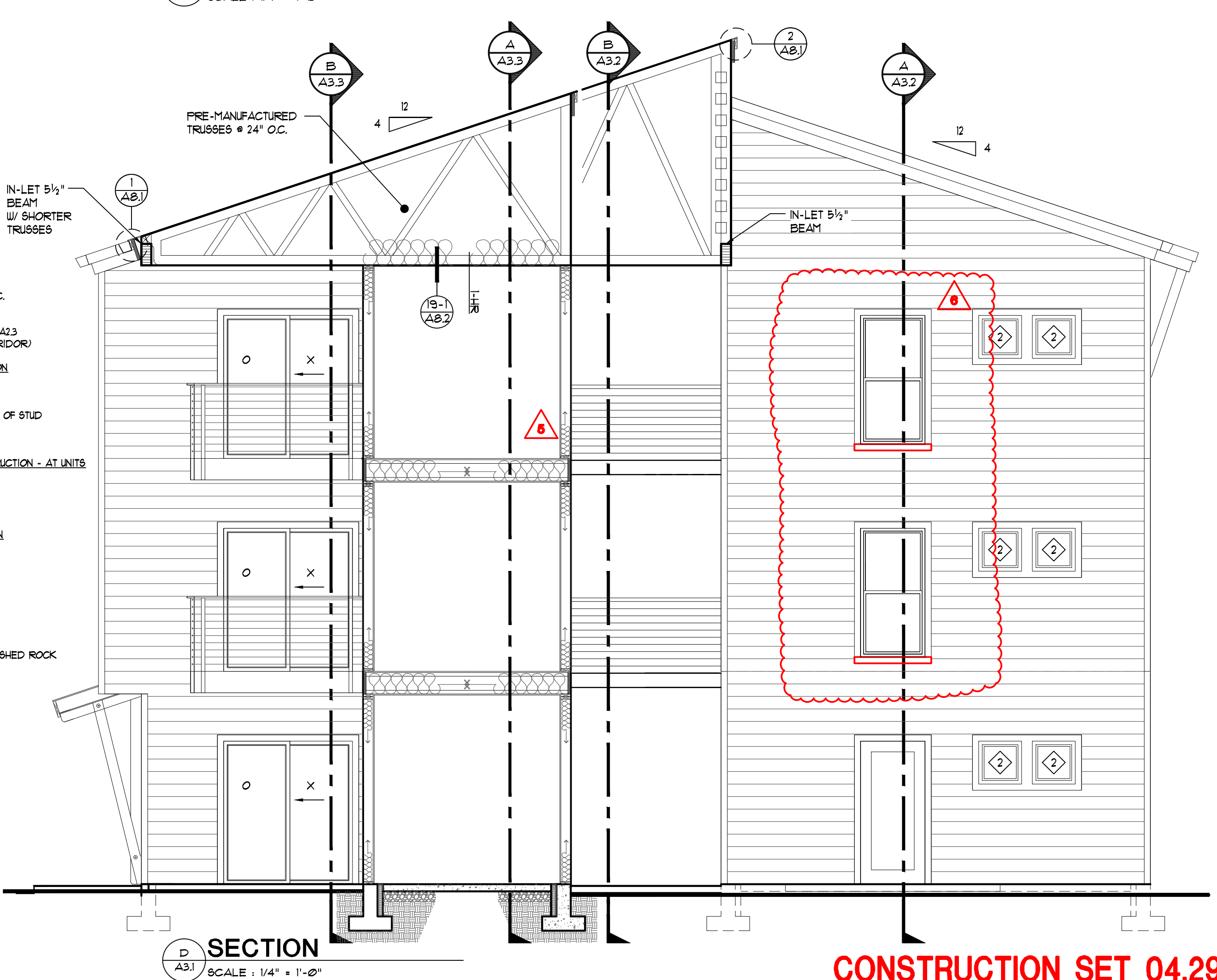
TYPICAL ROOF CONSTRUCTION
ARCHITECTURAL SHINGLES
B-LB ROOFING FELT
PLYWOOD
PRE-MANUFACTURED TRUSSES # 24" O.C.
R-49 BATT INSULATION
LHR CEILING ASSEMBLY PER 19/A81
- AT UNITS INDICATED CORRIDOR SEE A23
SOFFIT PANEL AT EXTERIOR (NOT CORRIDOR)

TYPICAL EXTERIOR WALL CONSTRUCTION
HARDIE PLANK SIDING
URS
FLYWOOD
2x6 STUD # 16" O.C. W/ BLK # MIDPOINT OF STUD
R-21 BATT INSULATION
5/8" GYP. BD.

TYPICAL 2ND AND 3RD FLOOR CONSTRUCTION - AT UNITS
3/4" GYPCRETE TOPPING
PLYWOOD
11-7/8 TJI'S
LHR CEILING ASSEMBLY PER 19/A81

TYPICAL INTERIOR WALL CONSTRUCTION
5/8" GYP. BD.
2x STUDS # 16" O.C. W/ BLOCKING
MIDPOINT OF STUD
BATT INSULATION FOR SOUND
5/8" GYP. BD.

TYPICAL 1ST FLOOR CONSTRUCTION
4" CONCRETE SLAB
6 MIL VAPOR BARRIER
6" COMPACTED GRAVEL 3/4" MINUS CRUSHED ROCK
R-5 SLAB EDGE INSULATION FOR 24"



- 1 13 MARCH 2023 SFR COMMENTS
- 2 5 FEB. 2024 CITY OF SALEM COMMENTS
- 3 5 FEB. 2024 REVIEW COMMENTS
- 4 28 MAR. 2024 CITY OF SALEM COMMENTS
- 5 14 JUNE 2024 EGRESS STAIR CHANGE
- 6 15 JULY 2024 CHANGE OFFICE TO STUDIO APPT & REMOVAL OF STUDIO BALCONIES

NEW APARTMENTS FOR:
Waller St SE
1349 Waller St Salem, Or
DATE: 20 APRIL 2022
DRAWN: JOB NO. 2207
A3.1

CONSTRUCTION SET 04.29.2024