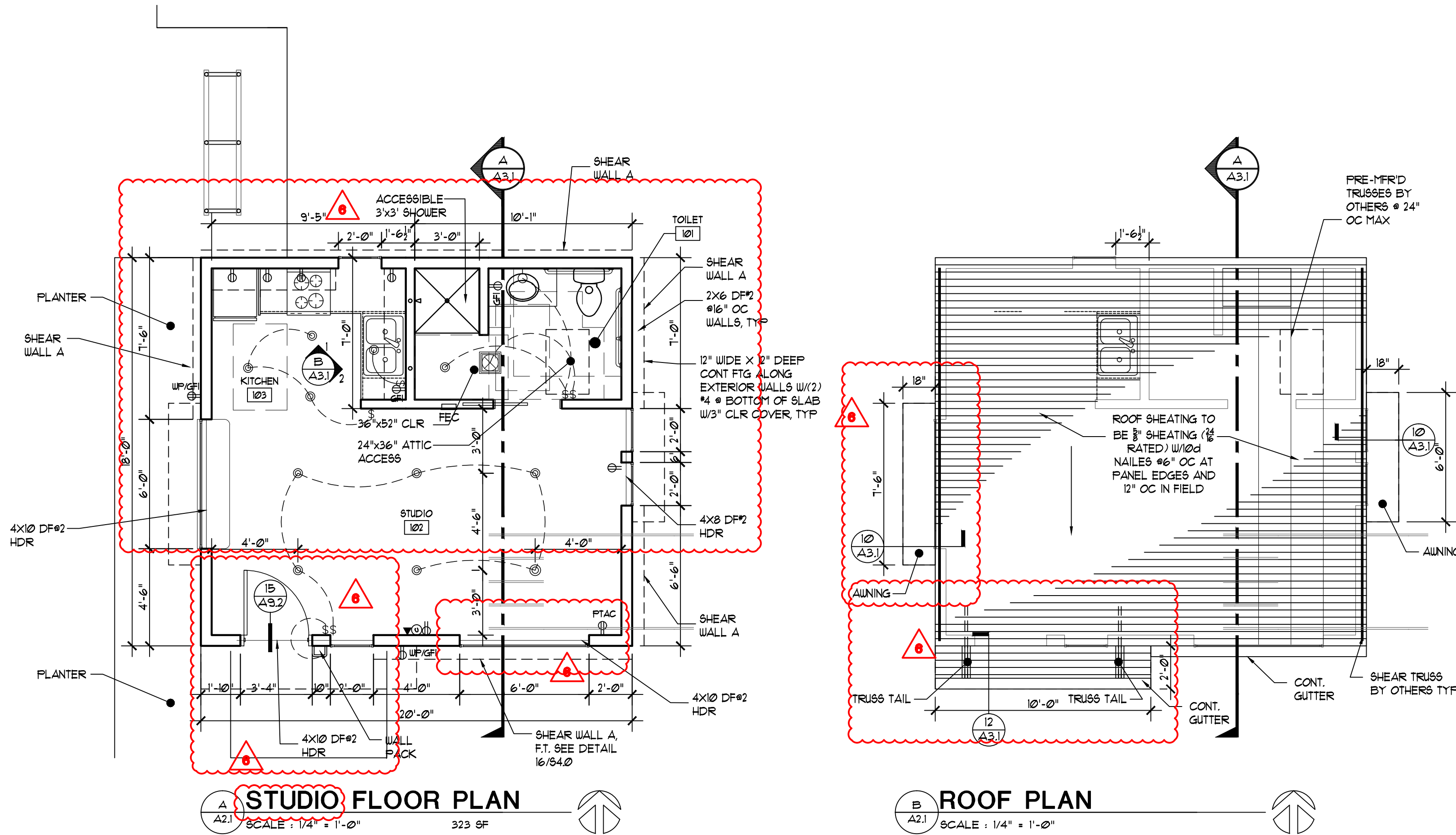


ROOF TRUSS DESIGN CRITERIA  
BOTTOM CHORD DEAD LOAD - 0 PSF  
TOP CHORD DEAD LOAD - 15 PSF (+ DL FROM OVERFRAMING)  
TOP CHORD LIVE LOAD - 20 PSF SNOW  
WIND SPEED - 98 MPH  
EXPOSURE - B  
SHEAR TRUSS LATERAL LOAD - 600 LBS (ASD EQ)



## SYMBOL KEY

	SMOKE DETECTOR, HARDWIRED, WITH BATTERY BACKUP
	DUPLEX OUTLET
	DUPLEX OUTLET GFCI
	DUPLEX OUTLET GFCI / WATER PROOF
	220V OUTLET
	TELEVISION CABLE CONNECTION
	TELEPHONE OUTLET
	SINGLE POLE SWITCH
	THREE WAY SWITCH
	SURFACE MOUNT LIGHT FIXTURE
	EXTERIOR WALL MOUNT LIGHT FIXTURE ON DAYLIGHT SENSOR
	KITCHEN STRIP LIGHTING
	LAUNDRY EXHAUST FAN
	80 CFM FAN/LIGHT / ON TIMER SWITCH
	150 CFM KITCHEN EXHAUST FAN

## SYMBOL KEY

	PROPOSED
	FIRE EXTINGUISHER (1 PER 3000 sq ft) (1) REQ'D KIDDE DRY CHEMICAL FIRE EXTINGUISHER UL CLASSIFICATION 2A-10BC (2498 SF/3000 sq ft) REQ'D TOP OF EXTINGUISHER 48" AFF
	EXIT LIGHT - COMBO WITH BATTERY BACKUP LITHONIA QUANTUM 18W/120 DC 6" EXIT-UNIT COMBO BACK MOUNT WITH BATTERY BACKUP
	WET LOCATION EMERGENCY LIGHT - WITH BATTERY BACKUP LITHONIA ELN2 LED EGRESS-UNIT BACK MOUNT WITH BATTERY BACKUP
	EMERGENCY LIGHT - WITH BATTERY BACKUP LITHONIA ELN2 LED EGRESS-UNIT BACK MOUNT WITH BATTERY BACKUP

OFFICE	ROOM NAME
100	ROOM NUMBER
10	SQUARE FOOTAGE
15	OCCUPANT LOAD FACTOR
1	OCCUPANT LOAD
OFFICE	ROOM NAME
100	ROOM NUMBER

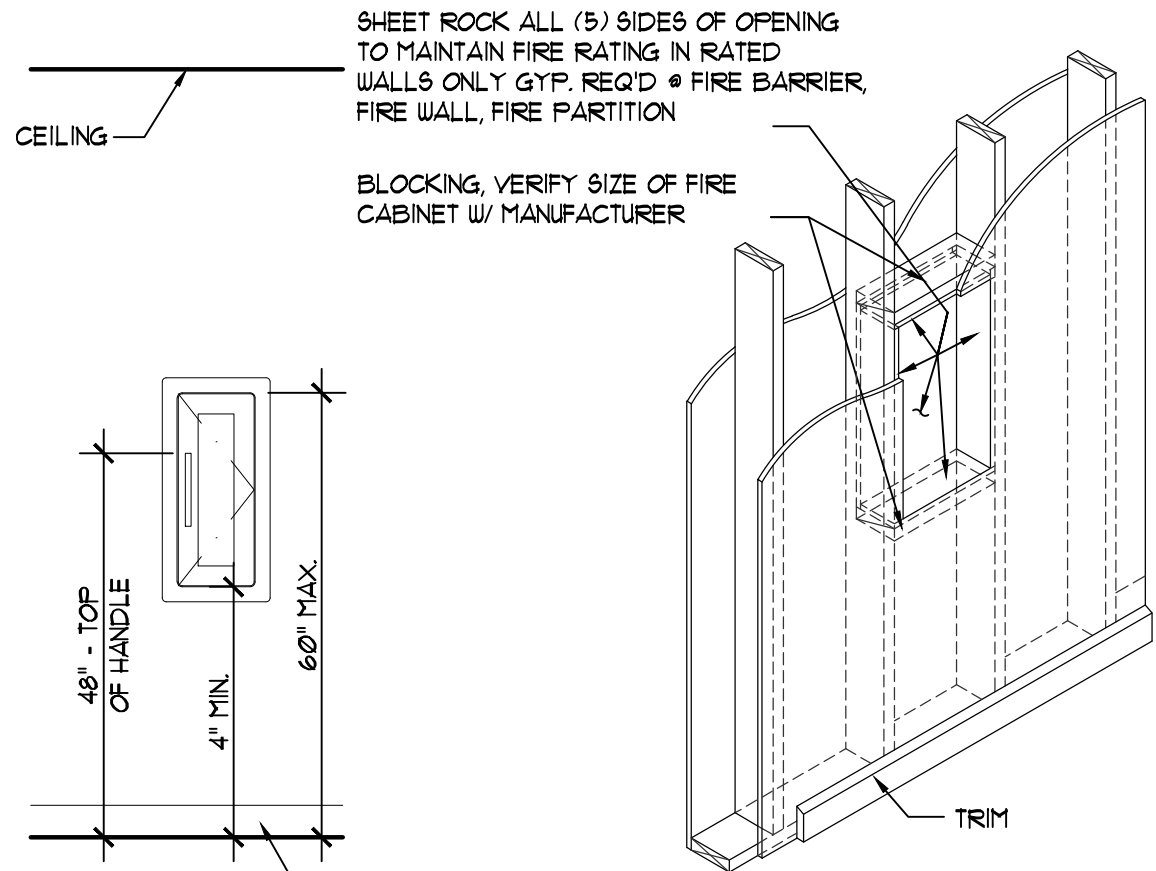
1	REVISION TAG
XXXX	DOOR TAG
	ELEVATION TAG / DATUM PT.

## DRAWING NOTES

SCALE: NTS

## FIRE EXTINGUISHER CABINET

SCALE: 1/2" = 1'-0"



## EMERGENCY LIGHT

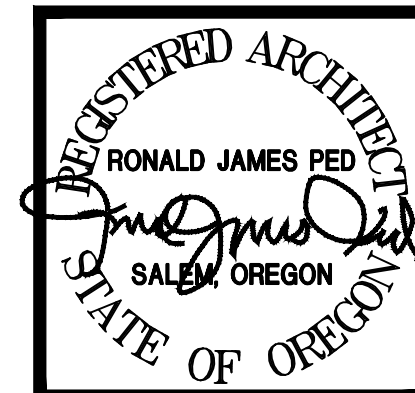
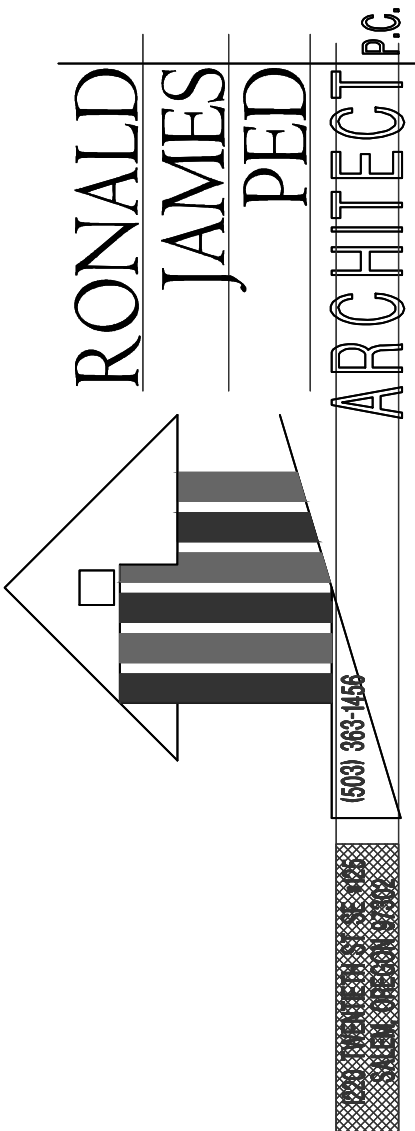
100% ILLUMINATION EMERGENCY POWER. THE POWER SUPPLY FOR MEANS OF EGRESS ILLUMINATION SHALL NORMALLY BE PROVIDED BY THE PREMISES ELECTRICAL SUPPLY.

IN THE EVENT OF POWER SUPPLY FAILURE, AN EMERGENCY ELECTRICAL SYSTEM SHALL AUTOMATICALLY ILLUMINATE THE FOLLOWING AREAS:

1. EXIT ACCESS CORRIDORS, PASSAGES AND AISLES IN ROOMS AND SPACES WHICH REQUIRE TWO OR MORE MEANS OF EGRESS.
2. EXIT ACCESS CORRIDORS AND EXIT STAIRWAYS LOCATED IN BUILDINGS REQUIRED TO HAVE TWO OR MORE EXITS.
3. EXTERIOR EGRESS COMPONENTS AT OTHER THAN THE LEVEL OF EXIT DISCHARGE UNTIL EXIT DISCHARGE IS ACCOMPLISHED FOR BUILDINGS REQUIRED TO HAVE TWO OR MORE EXITS.
4. INTERIOR EXIT DISCHARGE ELEMENTS, AS PERMITTED IN SECTION 102.3.1, IN BUILDINGS REQUIRED TO HAVE TWO OR MORE EXITS.
5. THE PORTION OF THE EXTERIOR EXIT DISCHARGE IMMEDIATELY ADJACENT TO EXIT DISCHARGE DOORWAYS IN BUILDINGS REQUIRED TO HAVE TWO OR MORE EXITS.

LOCAL SHUT-OFF CONTROLS (SECTION 1313.3.11) AT LEAST ONE LOCAL SHUT-OFF LIGHTING CONTROL FOR EVERY 2000 SQUARE FEET OF LIGHTED FLOOR AREA AND FOR ALL SPACES ENCLOSED BY WALLS OR CEILING HEIGHT PARTITIONS.

AUTOMATIC SHUT-OFF CONTROLS (SECTION 1313.3.12) ALL INTERIOR LIGHTING SYSTEMS ARE EQUIPPED WITH A SEPARATE AUTOMATIC CONTROL TO SHUT OFF LIGHTING DURING UNOCCUPIED PERIODS. OFFICES LESS THAN 300 SQUARE FEET, MEETING AND CONFERENCE ROOMS, AND SCHOOL CLASSROOMS SHALL BE EQUIPPED WITH OCCUPANCY SENSORS THAT COMPLY WITH SECTION 1313.3.12.



1	13 MARCH 2023	6PR COMMENTS
2	3 FEB 2024	CITY OF SALEM COMMENTS
3	5 FEB 2024	REVIEW COMMENTS
4	28 MAR 2024	CITY OF SALEM COMMENTS
5	14 JUNE 2024	EGRESS STAIR CHANGE
6	15 JULY 2024	CHANGE OFFICE TO STUDIO AP1
		1 REMOVAL OF STUDIO BALCONIES

NEW APARTMENTS FOR:  
Waller St SE  
1345 Waller St Salem, Or

DATE: 20 APRIL 2022

DRAWN:

JOB NO. 2207

A2.1

CONSTRUCTION SET 04.29.2024