

DRAWINGS FOR:

YETI

KEUBLER BLVD & TURNER RD SE

FOR:

CLUTCH INDUSTRIES INC

360 BELMONT ST NE

SALEM, OR 97301



Know what's below.
Call before you dig.

BENCHMARK UTILIZED:
CITY OF SALEM #2142

ELEV: 237.11' NGVD 29

3" BRASS DISK LOCATED AT WINTER ST & JUDSON ST SE,
SE CORNER OF INTERSEC, AT THE END OF RADIUS OF BACK OF WALK JUDSON,
0.6 S OF BACK OF WALK, 6.05 S OF CURB LINE JUDSON,
10.05 E OF E CURB LINE WINTER, 5.5 NE OF PP #1381,
23' S C/L JUDSON, 27.95' E C/L WINTER; IN CONC POST

DISCLAIMER: UTILITIES DEPICTED ARE BASED ON
EVIDENCE FOUND IN THE FIELD, MUNICIPALITY AND/OR
OTHER GOVERNMENT ENTITY AS-BUILT PLANS,
CONTRACTOR PLANS AND OTHER DOCUMENTS OF
RECORD. BARKER SURVEYING ASSUMES NO
RESPONSIBILITY FOR UTILITIES THAT ARE NO LONGER IN
USE, INSTALLED AFTER THE DATE OF ACTUAL SURVEY,
NOT IDENTIFIED OR NOT LOCATED. THIS INCLUDES
UTILITIES UPON PUBLIC OR PRIVATE PROPERTY.

SPECIFIC UTILITY POSITIONS INDICATED ON THE GROUND
SURFACE PROVIDED BY LOCATION SERVICES MAY VARY
DUE TO UNDERGROUND DETECTION CAPABILITIES.

ABBREVIATIONS			
ASPH	ASPHALT	IRR	IRRIGATION
AD	AREA DRAIN	IE	INVERT ELEVATION
ASSY	ASSEMBLY	JB	JUNCTION BOX
BLDG, BLD	BUILDING	LP	LIGHT POLE
BW	BOTTOM OF WALL	M	METER, MAIN
CATV	CABLE TELEVISION	MB	MAILBOX
CB	CATCH BASIN	MH	MANHOLE
CO	CLEAN-OUT	OH	OVER-HEAD
CONC	CONCRETE	P/L, R	PROPERTY LINE
CL, C	CENTERLINE	PP	POWER POLE
DIP	DUCTILE IRON PIPE	PVC	POLYVINYL CHLORIDE
EG	EDGE OF GRAVEL	PWR	POWER
EOP, EP	EDGE OF PAVEMENT	R, RAD	RADIUS
ELEV	ELEVATION	ROW, R/W	RIGHT-OF-WAY
EX, EXIST.	EXISTING	SS	SANITARY SEWER
FDC	FIRE DEPT. CONNECTOR	SD	STORM DRAIN
FT	FEET	SVC	SERVICE
FF	FINISH FLOOR	SWK, S/W	SIDEWALK
FG	FINISH GRADE	TC	TOP OF CURB
FH	FIRE HYDRANT	TEL	TELEPHONE
FI	FIELD INLET	TR	TRANSFORMER
FM	FORCE MAIN	TS	TRAFFIC SIGNAL
GRAV	GRAVEL	TW	TOP OF WALL
GM	GAS METER	TYP	TYPICAL
GP	GATE POST	UG, U/G	UNDER GROUND
GS	GROUND SHOT	UTL	UTILITY
GV	GAS VALVE	VL	VAULT
HC	HANDICAP	W/	WITH
HDPE	HIGH-DENSITY POLYETHYLENE	WM	WATER METER
HYD	HYDRANT	WLM	WETLANDS MARKER
IR	IRON ROD	YPC	YELLOW PLASTIC CAP
IP	IRON PIPE		

SYMBOLS			
AD	AREA DRAIN	SP	SIGN POST
CO or COO	CATCH BASIN	PEDO	PEDESTAL
COO	CLEANOUT	MB	MAIL BOX
FD	FIRE HYDRANT	IV	IRRIGATION VALVE
GV	GAS VALVE	LP	LIGHT POLE
WV	WATER VALVE	UP	UTILITY/POWER POLES
GPW	GAS/POWER/WATER METER	TP	TEST PIT
DSO	DOWN SPOUT	MF	MONUMENT FOUND
TEL	MANHOLE TELEPHONE		
SD	MANHOLE STORM DRAIN		
SS	MANHOLE SANITARY SEWER		
TREES	TREES - *TREENAME* DIAMETER (INCHES)/DRIP RADIUS (FEET) NOTE: DIAMETER MEASURED AT BREAST HEIGHT		

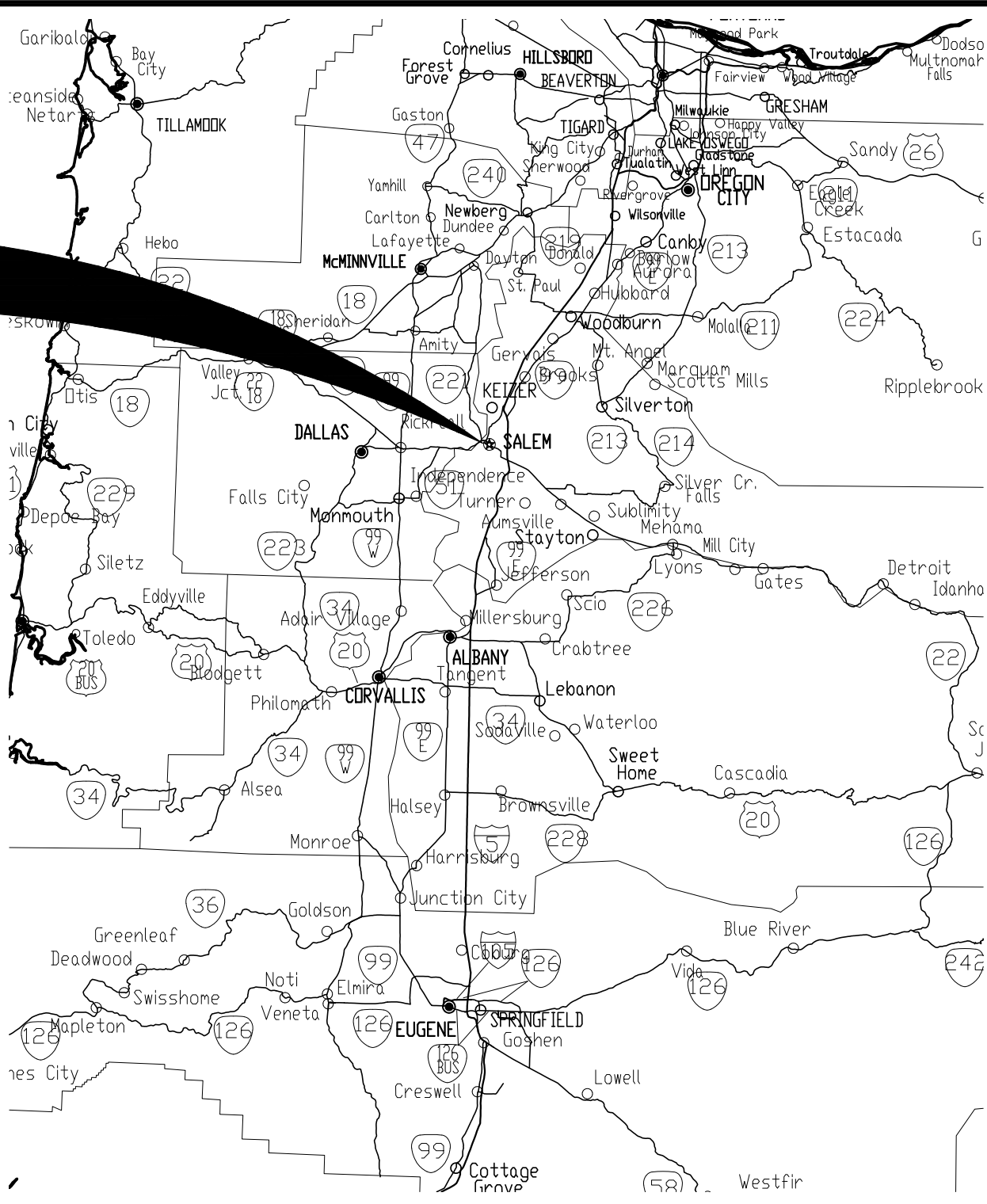
LINE TYPES			
CATV LINE	CATV	CATV	CATV
COMMUNICATION LINE	COM	COM	COM
EASEMENT LINE	EASE	EASE	EASE
FENCE LINE	FENCE	FENCE	FENCE
FIBER OPTIC LINE	FOC	FOC	FOC
GAS LINE	GAS	GAS	GAS
EDGE OF GRAVEL LINE	EG	EG	EG
OVERHEAD LINE	OH	OH	OH
PHONE LINE	PH	PH	PH
POWER LINE	ELEC	ELEC	ELEC
SANITARY SEWER LINE	SS	SS	SS
STORM DRAIN LINE	SD	SD	SD
WATER LINE	W	W	W

PROJECT
LOCATION

PROJECT
LOCATION



VICINITY MAP



SHEET INDEX

SHT NO	DESCRIPTION
C0.0	COVER SHEET, VICINITY AND LOCATION MAPS. DRAWING INDEX
C1.0	EXISTING CONDITIONS, EROSION CONTROL, AND DEMOLITION PLAN
C1.1	POST-DEVELOPED EROSION CONTROL PLAN
C1.2	EROSION CONTROL NOTES
C1.3	CITY OF SALEM EROSION CONTROL NOTES
C1.4	EROSION CONTROL DETAILS
C2.0	GRADING AND DRAINAGE PLAN
C3.0	UTILITY PLAN
C4.0	SURFACING PLAN
C5.0	CONSTRUCTION NOTES
C5.1	CONSTRUCTION NOTES
C6.0	CONSTRUCTION DETAILS
C6.1	CONSTRUCTION DETAILS
-	-
-	-
-	-

NO.	DATE	DESCRIPTION	BY
1	NOV 2022	REVISIONS	
1	NOV 2022	REVISIONS	
1	NOV 2022	REVISIONS	
1	NOV 2022	REVISIONS	
1	NOV 2022	REVISIONS	
1	NOV 2022	REVISIONS	
1	NOV 2022	REVISIONS	
1	NOV 2022	REVISIONS	
1	NOV 2022	REVISIONS	
1	NOV 2022	REVISIONS	

REGISTERED PROFESSIONAL ENGINEER
NOV 12, 2008
WILLIAM J. WELLS
RENEWALS: 6/30/2028

REVIEW

WESTECH ENGINEERING, INC.
CONSULTING ENGINEERS AND PLANNERS
3841 Fairview Industrial Dr. S.E., Suite 100, Salem, OR 97302
Phone: (503) 585-2474 Fax: (503) 585-3986
E-mail: westech@westech-eng.com

WE

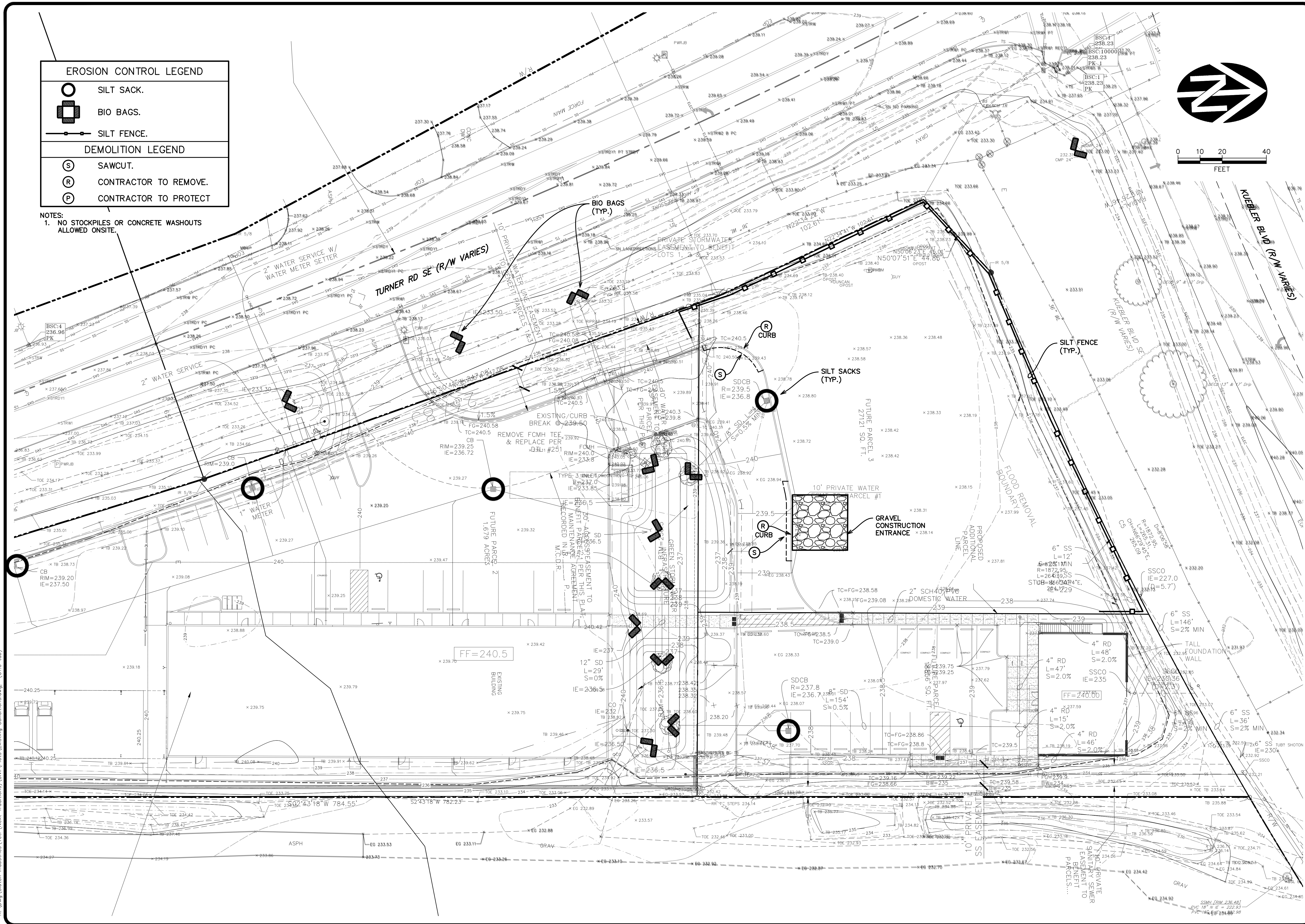
CLUTCH INDUSTRIES

YETI

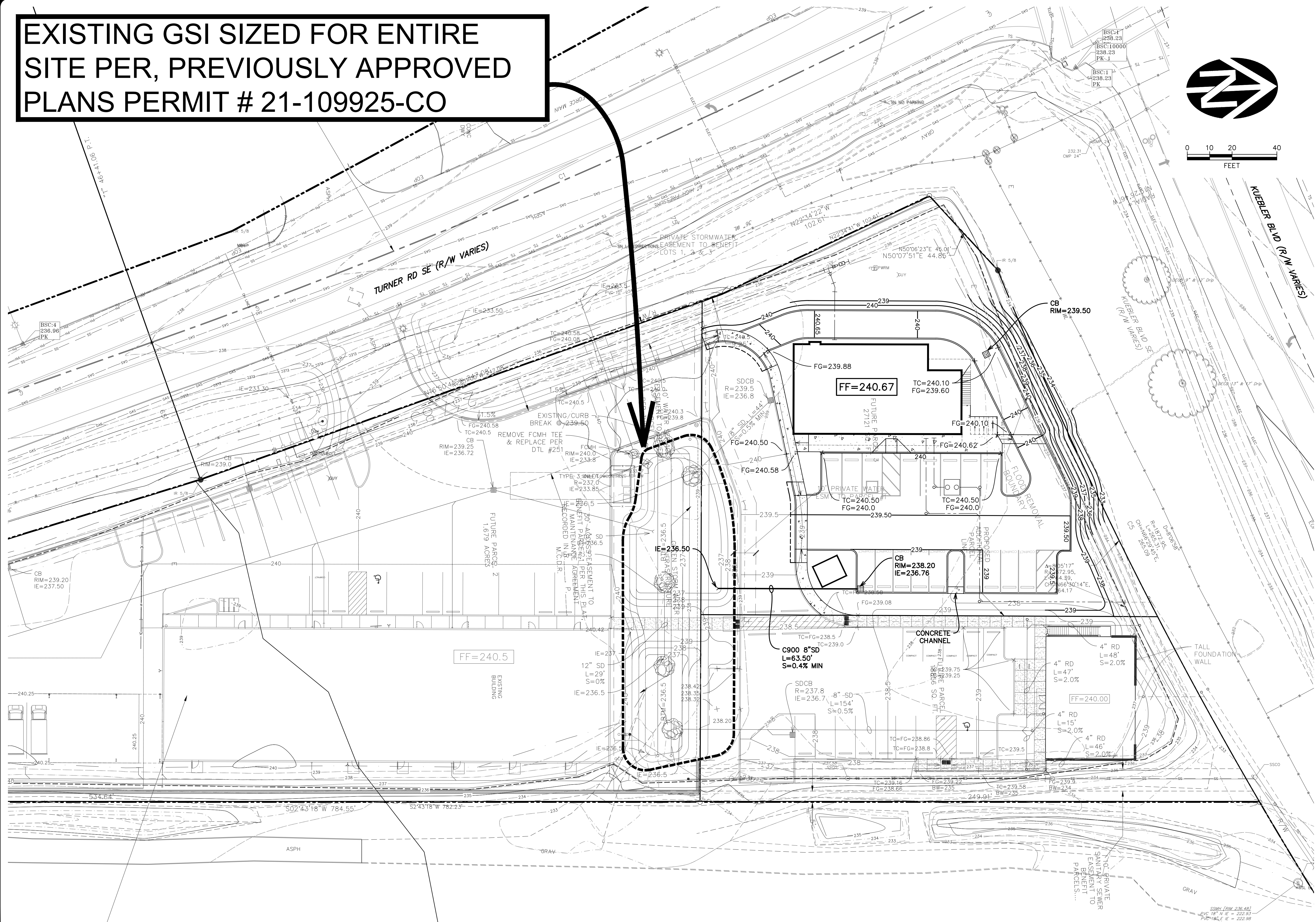
COVER SHEET, VICINITY
AND LOCATION MAPS,
DRAWING INDEX

DRAWING
C0.0

JOB NUMBER
3426.0000.0



EXISTING GSI SIZED FOR ENTIRE
SITE PER, PREVIOUSLY APPROVED
PLANS PERMIT # 21-109925-CO



5/30/2024 2:41:22 PM
 R:\Dwg\Clutch Industries\Yeti (Next Traditions)\Civil\Plots\Grading and Drainage Plan.dwg, (C2.0 tab)

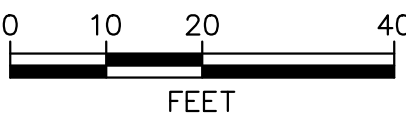
[illegible]

WE

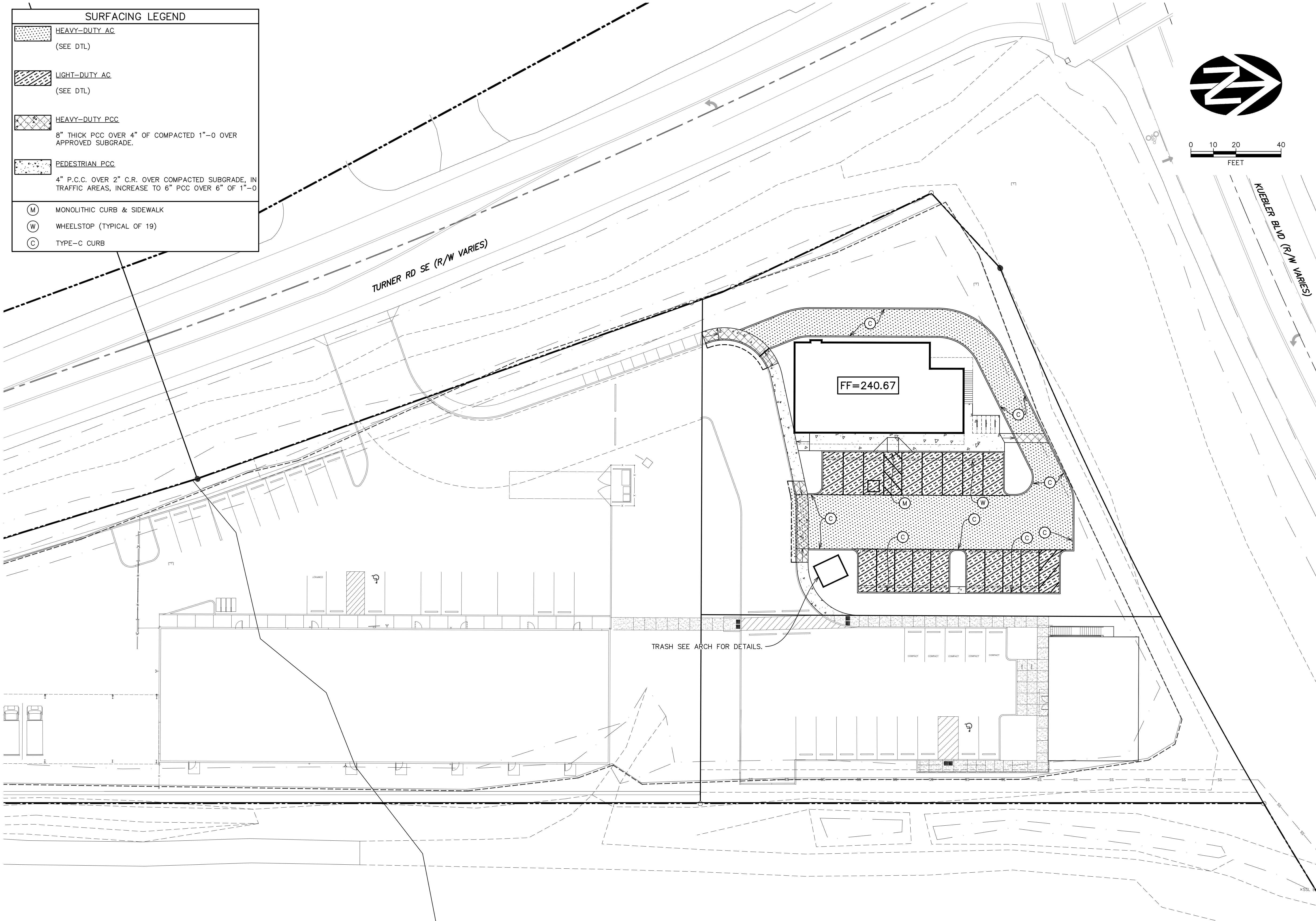
WESTECH ENGINEERING, INC.
CONSULTING ENGINEERS AND PLANNERS

141 Fairview Industrial Dr. S.E., Suite 100, Salem, OR 97301
Phone: (503) 585-2474 Fax: (503) 585-3986
E-mail: westech@westech-eng.com

CLUTCH INDUSTRIES	YETI	GRADING AND DRAINAGE PLAN
DRAWING C2.0		JOB NUMBER 3426 0000 0



DRAWING	
C3.0	
JOB NUMBER	
3426.0000.0	



VERIFY SCALE

BAR IS ONE INCH ON ORIGINAL DRAWING

1"

IF NOT ONE INCH ON THIS SHEET, ADJUST SCALES ACCORDINGLY

DSN.	JW
DRN.	IH
CKD.	JW
DATE	NOV 2022



WESTECH ENGINEERING, INC.
CONSULTING ENGINEERS AND PLANNERS



3841 Fairview Industrial Dr. S.E., Suite 100, Salem, OR 97302
Phone: (503) 585-2474 Fax: (503) 585-3986
E-mail: westech@westech-eng.com

CLUTCH INDUSTRIES

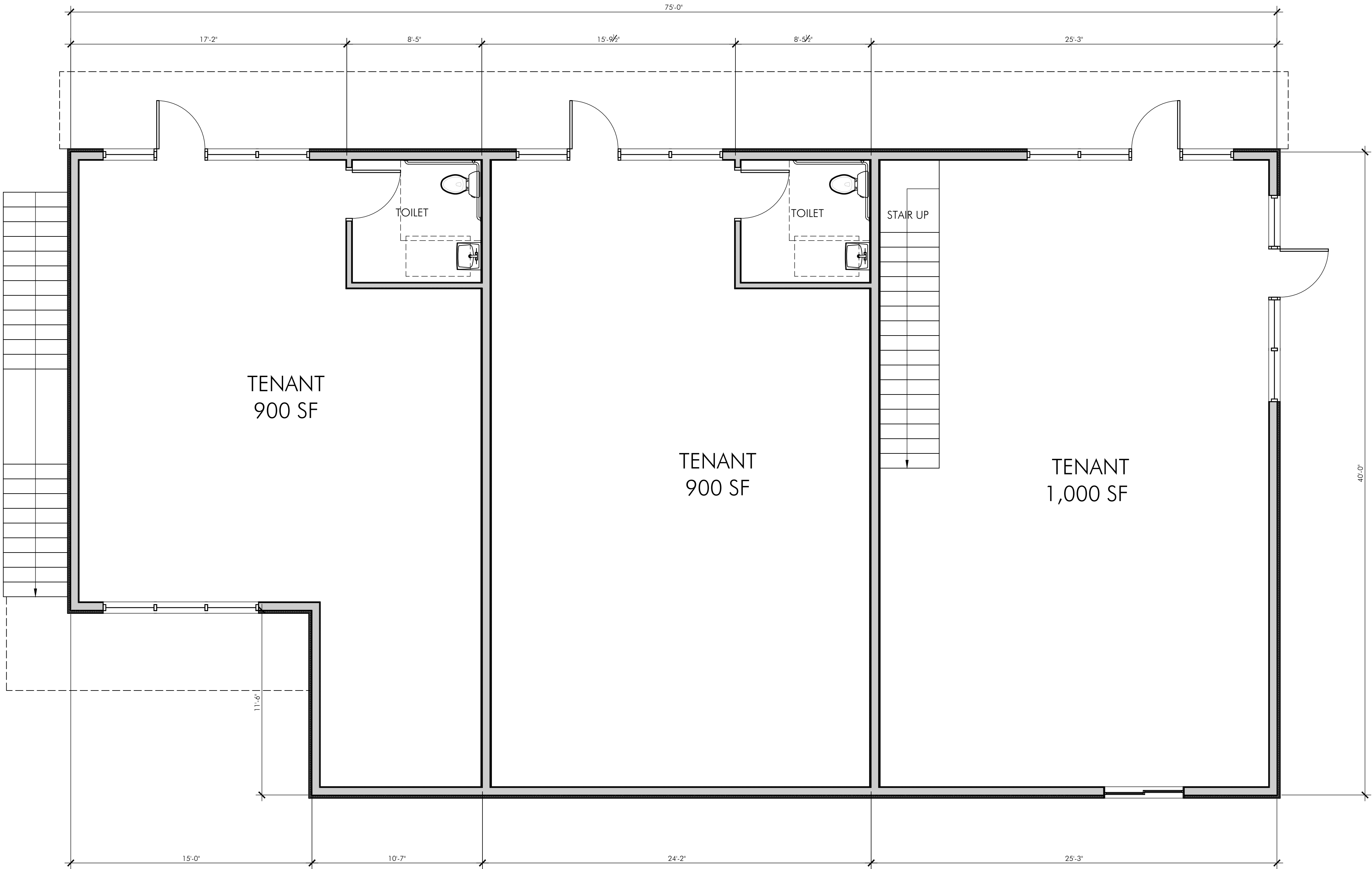
YETI

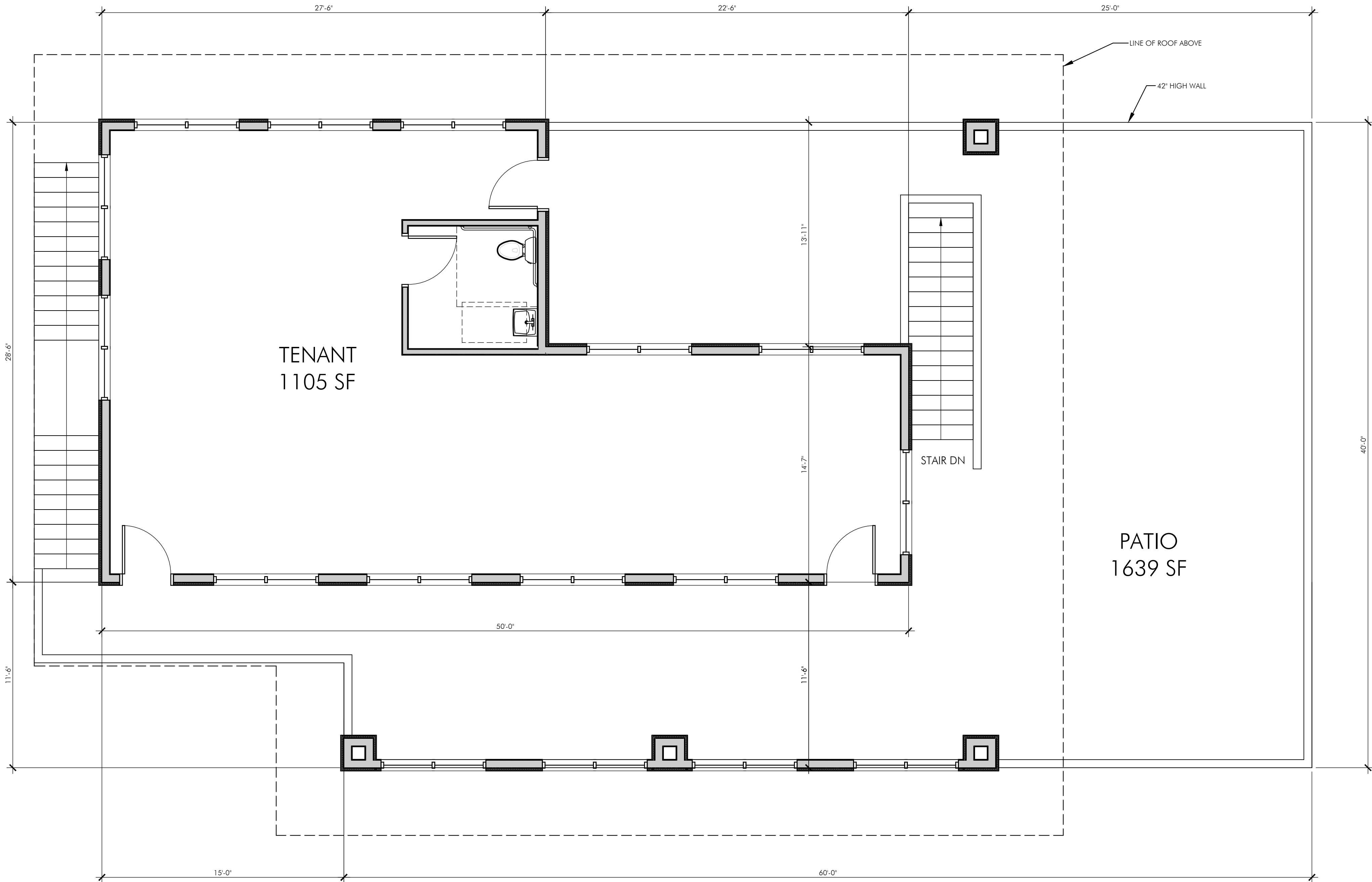
SURFACING PLAN

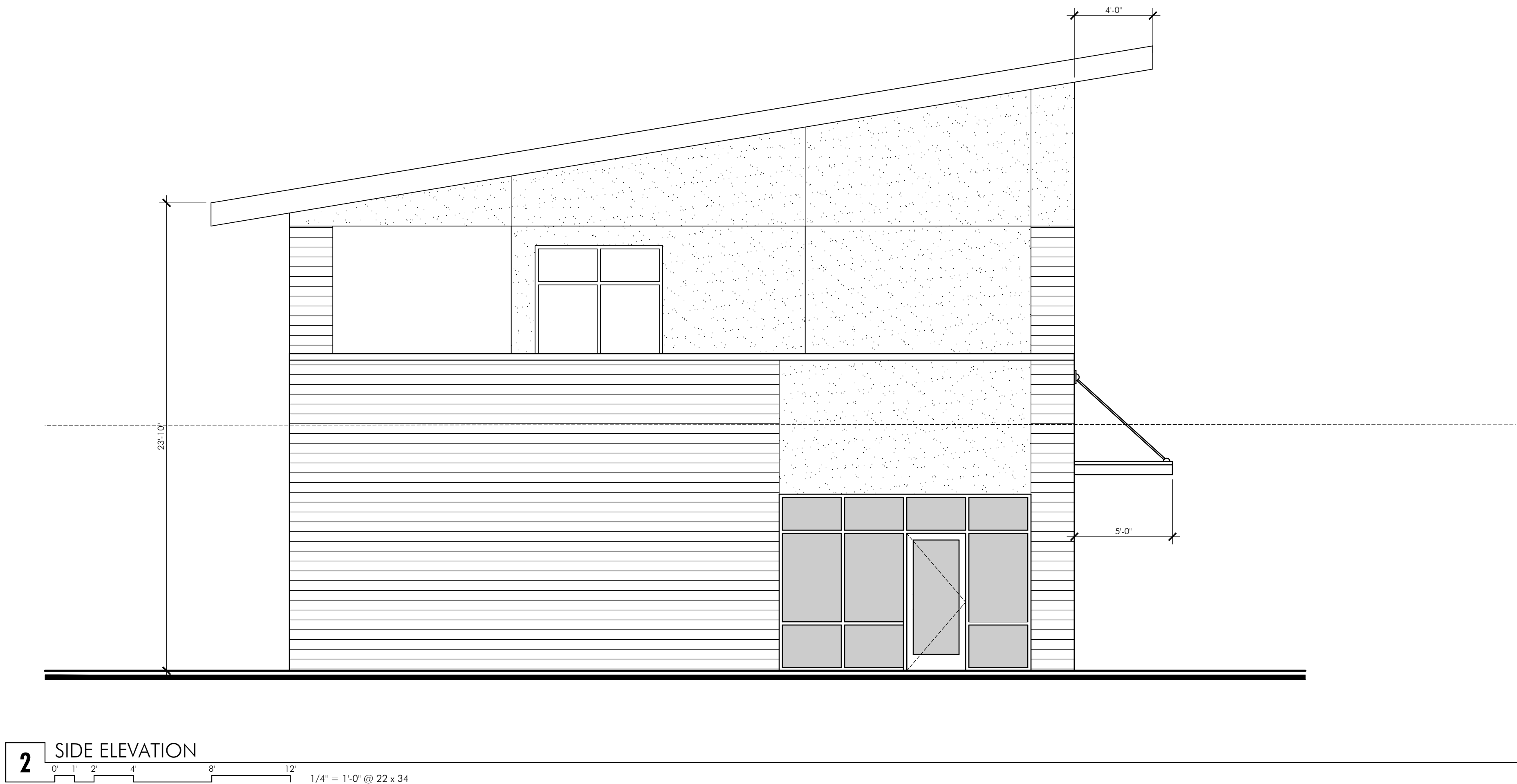
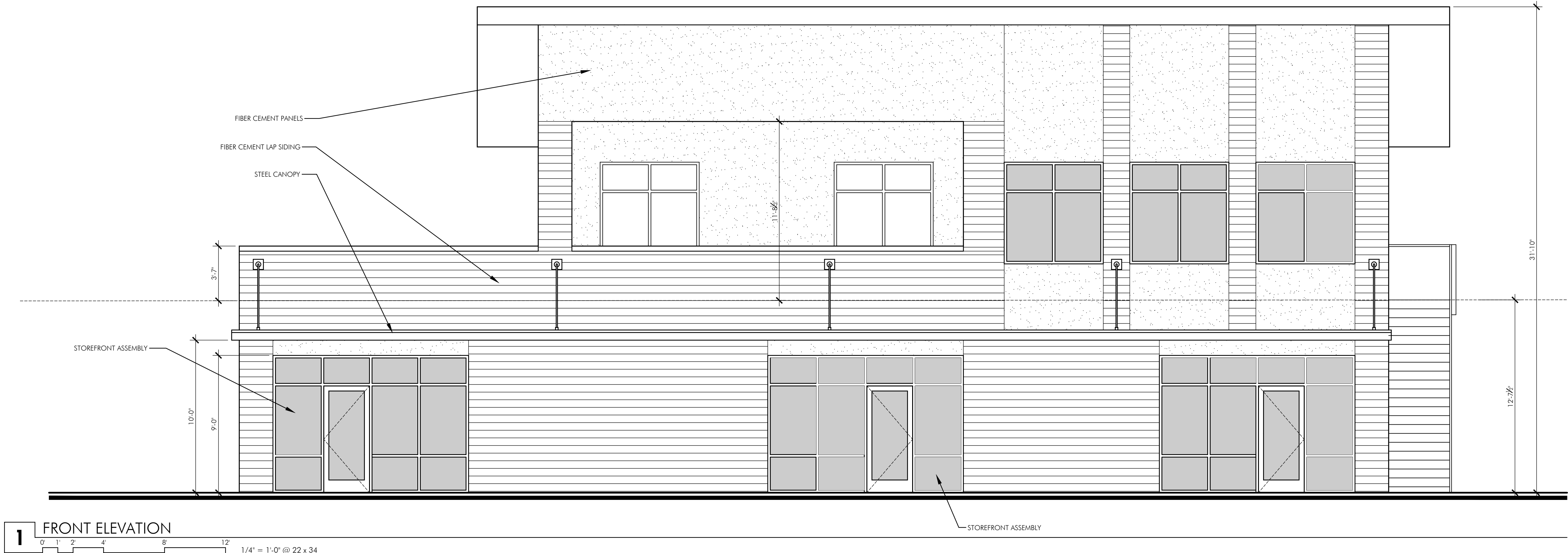
DRAWING
C4.0

JOB NUMBER

3426.0000.0







STUDIO



ARCHITECTURE
INCORPORATED

275 COURT ST. NE
SALEM, OR 97301
503.390.6500
www.studio3architecture.com

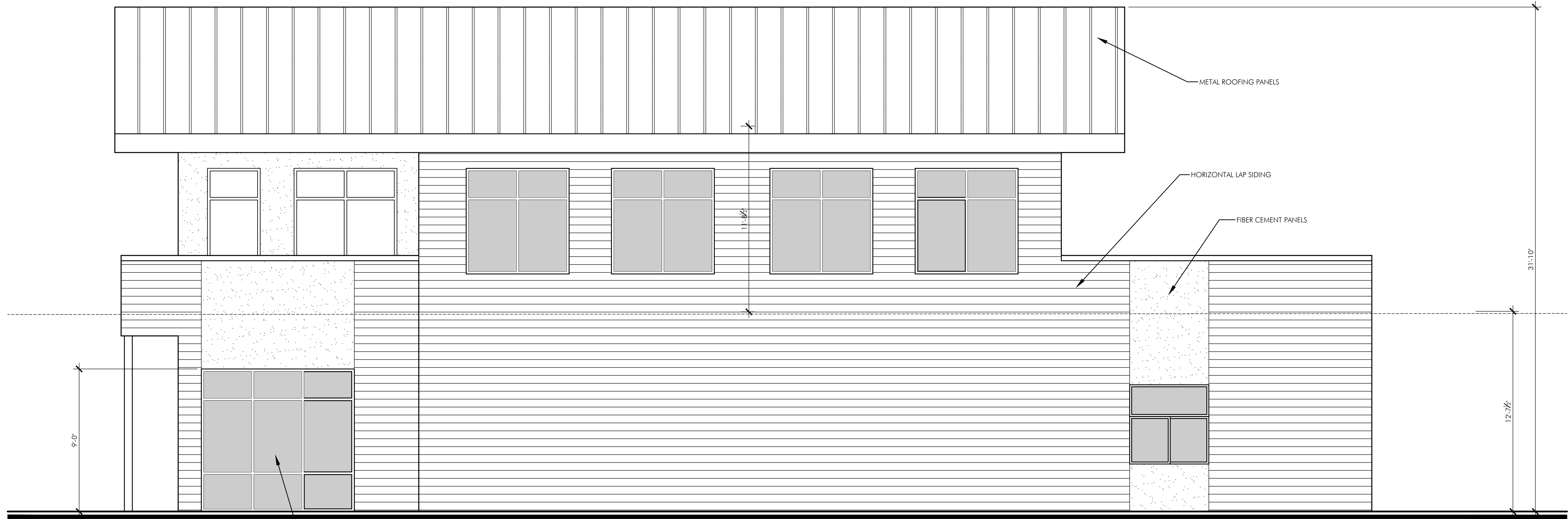
IN THE EVENT CONFLICTS ARE DISCOVERED
BETWEEN THE ORIGINAL SIGNED AND SEALED
DOCUMENTS PREPARED BY THE ARCHITECTS,
AND/OR THEIR CONSULTANTS, AND ANY COPY OF
THE DOCUMENTS TRANSMITTED BY MAIL, FAX,
ELECTRONICALLY OR OTHERWISE, THE ORIGINAL
SIGNED AND SEALED DOCUMENTS SHALL GOVERN.

PROJECT # 2022-165
DATE: 7 JULY 2024
REVISIONS

NEW BUILDING
YETI DINING EXPERIENCE
4870 TURNER ROAD S SALEM, OREGON

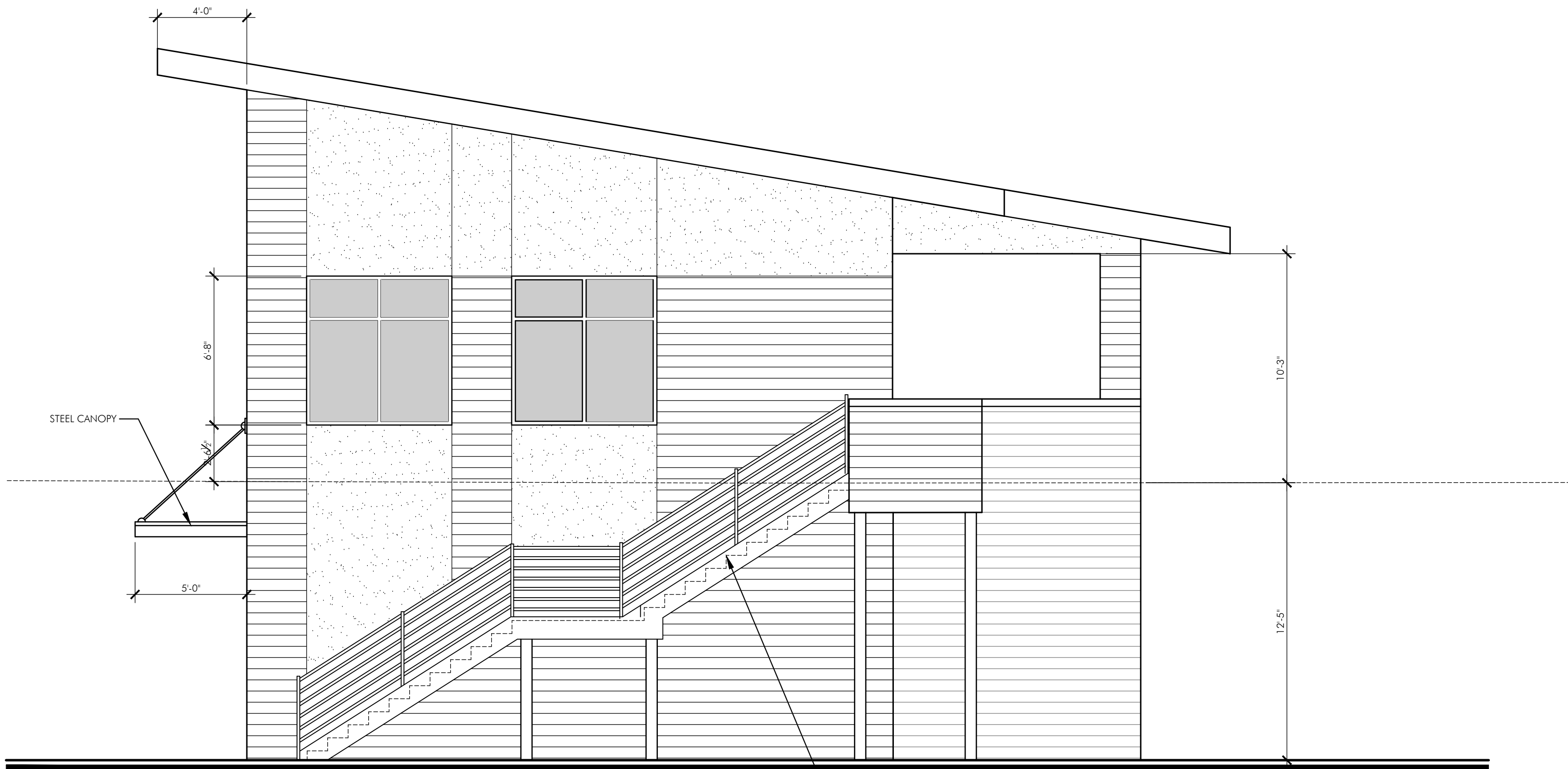
SHEET

A3.1



1 REAR ELEVATION

0' 1' 2' 4' 8' 12' 1/4" = 1'-0" @ 22 x 34 ALUMINUM STOREFRONT



2 SIDE ELEVATION

0' 1' 2' 4' 8' 12' 1/4" = 1'-0" @ 22 x 34