

STATE ST

ASPHALT ROADWAY

ASPHALT ROADWAY

DRIVEWAY

DRIVEWAY

CONCRETE SIDEWALK

ASPHALT PARKING LOT

ASPHALT

FLOOD ZONE AE
FLOODWAY

EXISTING BUILDING "OREGON MARKET"

NOTE: BOUNDARY LINE AND BUILDING ENCROACHMENT ARE PER PARTITION PLAT 2012-16.

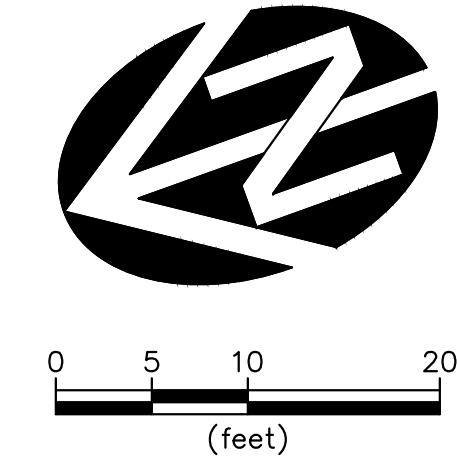
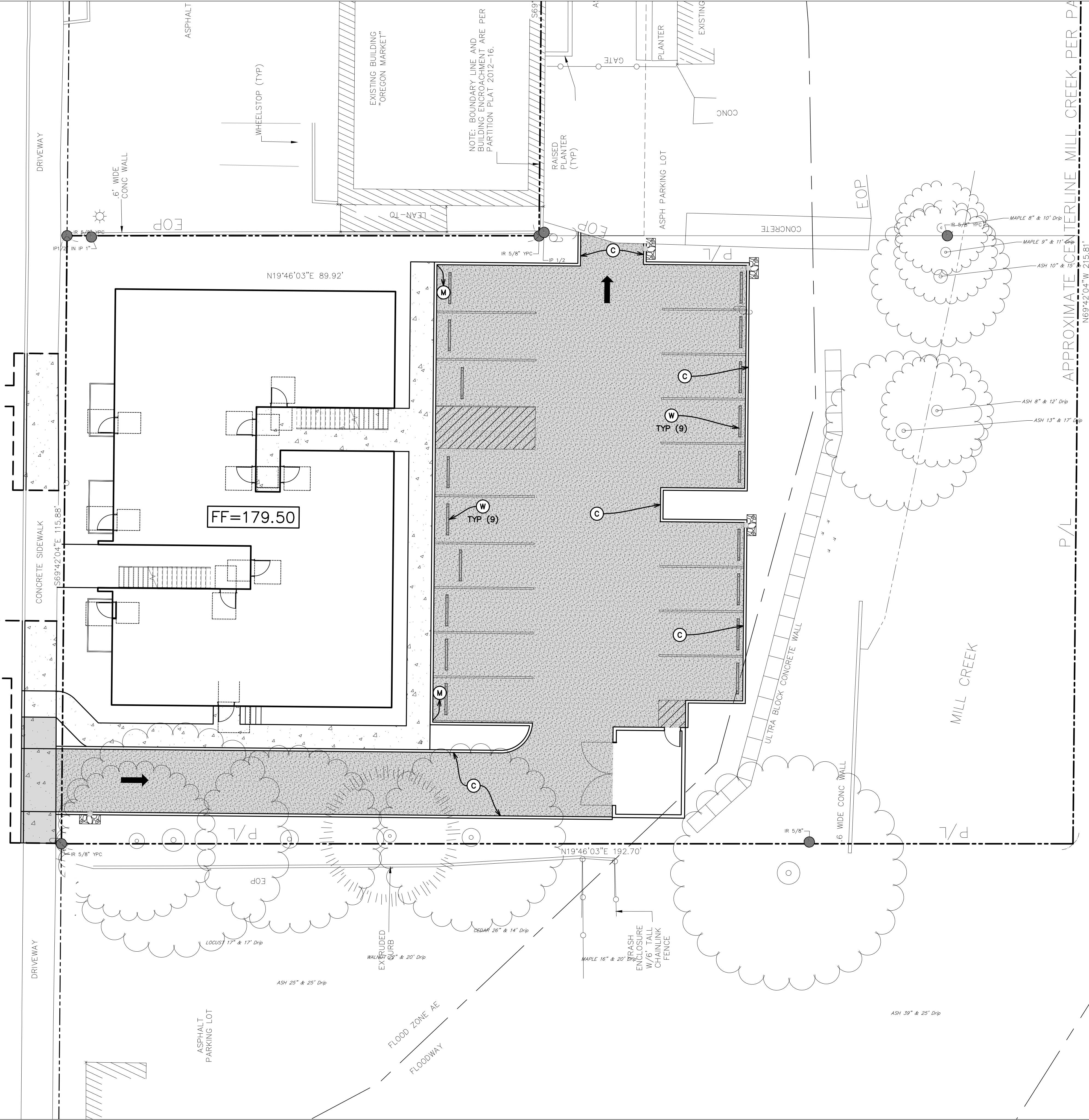
RAISED PLANTER (TYP)

ASPH PARKING LOT

CONCRETE

MILL CREEK

APPROXIMATE CENTERLINE MILL CREEK PER PA 166942.04' W 213.81'



SURFACING LEGEND	
	PERVIOUS PAVEMENT 3" PERVIOUS PAVEMENT OVER 18" OF 1" OPEN GRADED CRUSHED ROCK OVER APPROVED SUBGRADE
	PEDESTRIAN CONCRETE 4" OF PCC OVER 1" OF COMPACTED 1"-0 OVER APPROVED SUBGRADE
	HEAVY DUTY CONCRETE 4" OF PCC OVER 1" OF COMPACTED 1"-0 OVER APPROVED SUBGRADE
	TYPE 'C' CURB
	MONOLITHIC CURB & SIDEWALK
	WHEELSTOPS

STUDIO
3
ARCHITECTURE
INCORPORATED
222 COMMERCIAL ST. NE
SALEM, OR 97301-3410
P: 503.390.6500
F: 503.390.6501
www.studio3architecture.com

REGISTERED PROFESSIONAL
ENGINEER
ARCHITECT
REVIEW
WILLIAM J. WELLS
JULY 12, 2008
RENEWS: 6/30/2026
IN THE EVENT CONFLICTS ARE
DISCOVERED BETWEEN THE ORIGINAL
SIGNED AND SEALED DOCUMENTS
PREPARED BY THE ARCHITECTS AND/OR
THEIR CONSULTANTS, AND ANY COPY OF
THE DOCUMENTS TRANSMITTED BY MAIL,
FAX, ELECTRONICALLY OR OTHERWISE,
THE ORIGINAL SIGNED AND SEALED
DOCUMENTS SHALL GOVERN.

PROJECT #3529.0000.0
DATE: 08/24
DRAWN BY: AK
CHECKED BY: JW

REVISIONS:
△
△
△
△

WESTTECH ENGINEERING, INC.
CONSULTING ENGINEERS AND PLANNERS
3841 Fairview Industrial Dr. S.E., Suite 100, Salem, OR 97302
Phone: (503) 585-2474 Fax: (503) 585-3986
E-mail: westtech@westtech-eng.com

SITE IMPROVEMENTS
SALEM, OR 97301
2020 STATE ST

SHEET:
C4.0
SURFACING PLAN