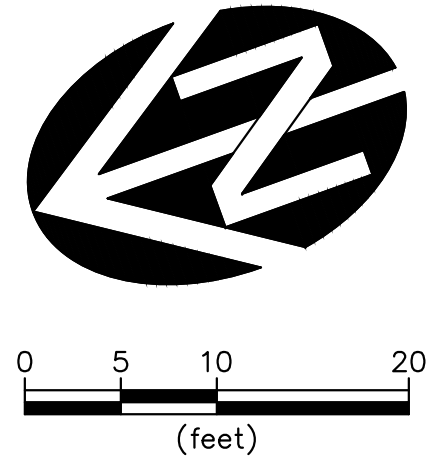
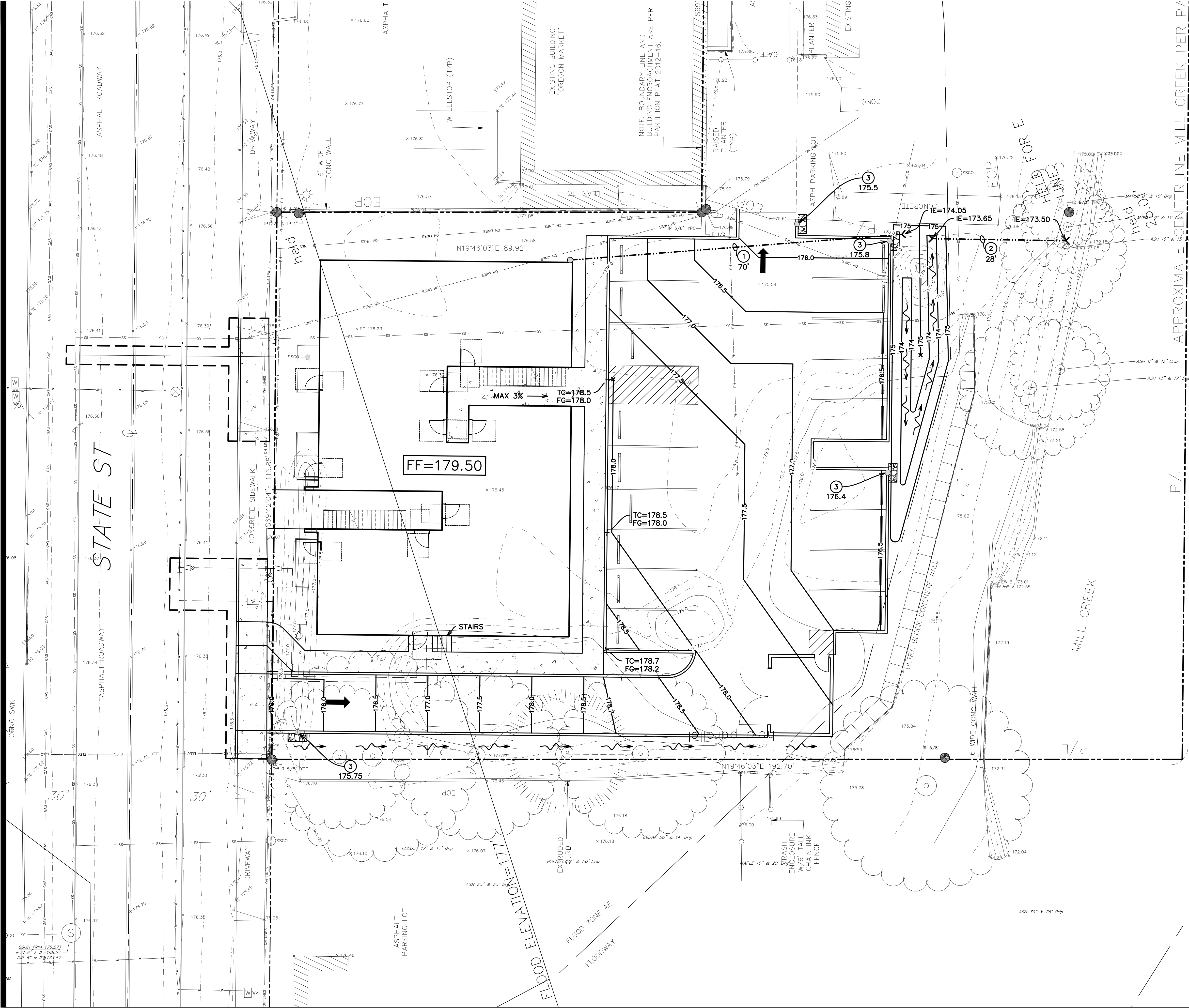


8/16/2024 3:35:30 PM

C:\Users\GAD\OneDrive\Engineering\Dropbox\Westech\Kenyon\My PC (C108-18)\Desktop\Work (PC)\Projects\Studio 3\2020 State St\Civil\Plans\C2.0 - Grading Plan.dwg (C2.0 tab)

Copyright © 2024, STUDIO 3 ARCHITECTURE, INC.



0 5 10 20
(feet)

held parallel

DRAINAGE KEY CALLOUTS	
①	6"RD, L=SEE PLAN, S=1% MIN
②	8" SD, S=0.5% MIN, L=SEE PLAN
③	CURB BREAK, FG=SEE PLAN
NOTES	

STUDIO

3
ARCHITECTURE
INCORPORATED

222 COMMERCIAL ST. NE
SALEM, OR 97301-3410
P: 503.390.6500
F: 503.390.6501
www.studio3architecture.com



REVISIONS: 6/30/2026
IN THE EVENT CONFLICTS ARE DISCOVERED BETWEEN THE ORIGINAL SIGNED AND SEALED DOCUMENTS PREPARED BY THE ARCHITECTS AND/OR THEIR CONSULTANTS, AND ANY COPY OF THE DOCUMENTS TRANSMITTED BY MAIL, FAX, ELECTRONICALLY OR OTHERWISE, THE ORIGINAL SIGNED AND SEALED DOCUMENTS SHALL GOVERN.

PROJECT #3529.0000.0
DATE: 08/24
DRAWN BY: AK
CHECKED BY: JW

REVISIONS:
△
△
△

WESTTECH ENGINEERING, INC.
CONSULTING ENGINEERS AND PLANNERS
3841 Fairview Industrial Dr. S.E., Suite 100, Salem, OR 97302
Phone: (503) 585-2474 Fax: (503) 585-3986
E-mail: westtech@westtech-eng.com

SITE IMPROVEMENTS
SALEM, OR 97301
2020 STATE ST

SHEET:
C2.0
GRADING &
DRAINAGE PLAN