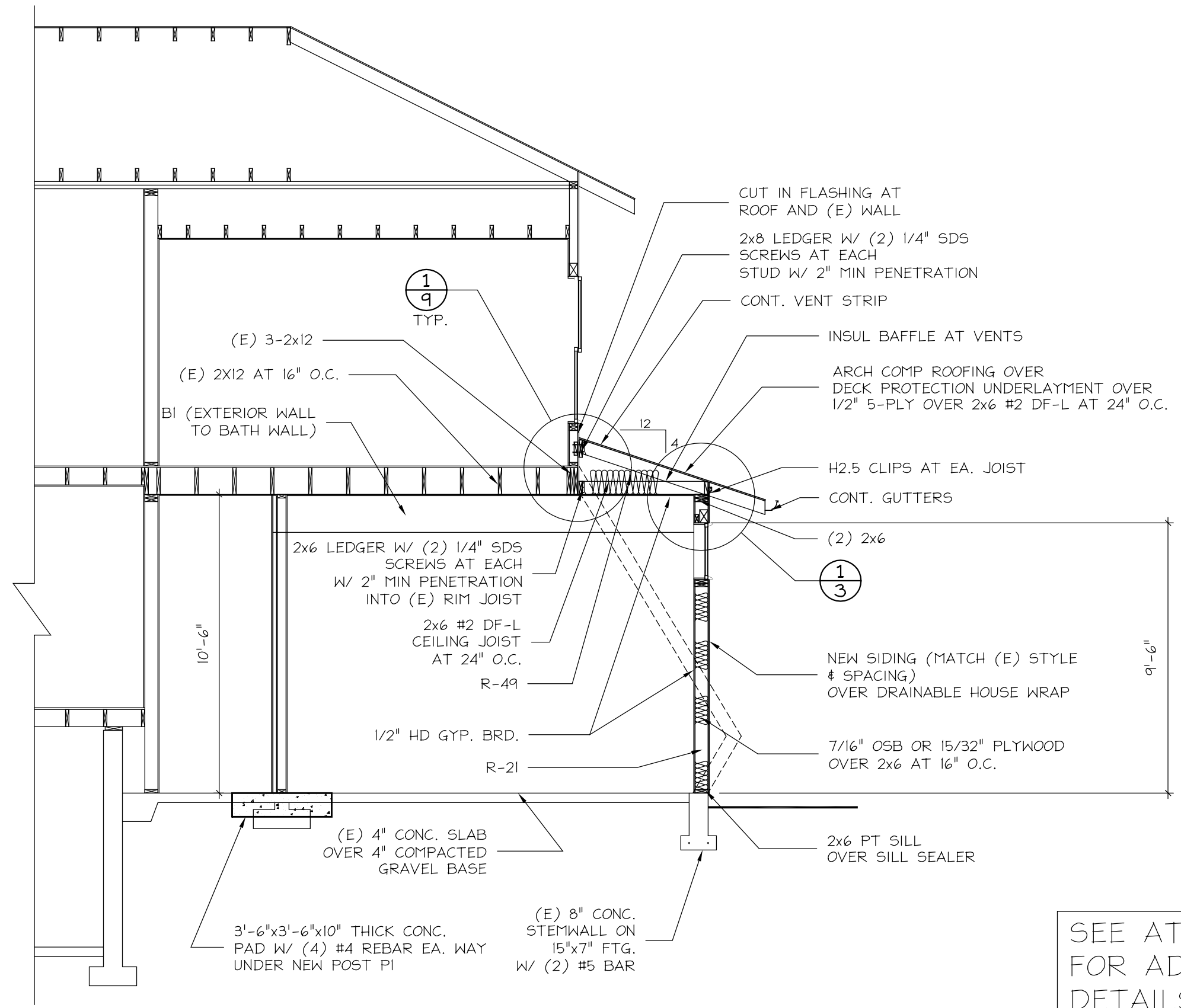


NOTES:
 -USE #2 DF-L UNLESS NOTED
 -USE P.T. WOOD IF IN CONTACT W/ CONCRETE
 -USE P.T. WOOD ON EXTERIOR DECK SYSTEMS
 -FND. VENTS 12" AWAY FROM HOLD DOWNS
 -ALL WOOD CONNECTORS CALLED OUT ARE SIMPSON STRONG TIE
 -ZMAX COATING ON EXTERIOR CONNECTORS



CUT IN FLASHING AT ROOF AND (E) WALL
 2x8 LEDGER W/ (2) 1/4" SDS SCREWS AT EACH STUD W/ 2" MIN PENETRATION
 CONT. VENT STRIP

INSUL BAFFLE AT VENTS
 ARCH COMP ROOFING OVER DECK PROTECTION UNDERLAYMENT OVER 1/2" 5-PLY OVER 2x6 #2 DF-L AT 24" O.C.

H2.5 CLIPS AT EA. JOIST
 CONT. GUTTERS

(2) 2x6
 NEW SIDING (MATCH (E) STYLE & SPACING) OVER DRAINABLE HOUSE WRAP

7/16" OSB OR 15/32" PLYWOOD OVER 2x6 AT 16" O.C.

2x6 PT SILL OVER SILL SEALER

(E) 3-2x12
 (E) 2x12 AT 16" O.C.
 BI (EXTERIOR WALL TO BATH WALL)

2x6 LEDGER W/ (2) 1/4" SDS SCREWS AT EACH W/ 2" MIN PENETRATION INTO (E) RIM JOIST
 2x6 #2 DF-L CEILING JOIST AT 24" O.C.
 R-49

1/2" HD GYP. BRD.
 R-21

(E) 4" CONC. SLAB OVER 4" COMPACTED GRAVEL BASE

3'-6"x3'-6"x10" THICK CONC. PAD W/ (4) #4 REBAR EA. WAY UNDER NEW POST PI

(E) 8" CONC. STEMWALL ON 15"x7" FTG. W/ (2) #5 BAR

SEE ATTACHED ENGINEERING FOR ADDITIONAL DETAILS & SCHEDULES

SECTION A-8

SCALE 1/4"=1'-0"