

East Salem Community Center Turf Field
Salem, OR

Lighting System

Pole/Fixture Summary						
Pole ID	Pole Height	Mtg Height	Fixture Qty	Luminaire Type	Load	Circuit
S1-S4	60'	60'	1	TLC-LED-1200	1.17 kW	A
		60'	1	TLC-LED-550	0.54 kW	A
		60'	2	TLC-LED-900	1.76 kW	A
4			16		13.88 kW	

Circuit Summary			
Circuit	Description	Load	Fixture Qty
A	Soccer	13.88 kW	16

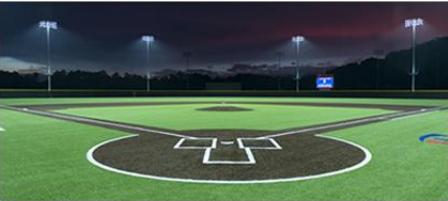
Fixture Type Summary								
Type	Source		Wattage	Lumens	L90	L80	L70	Quantity
TLC-LED-1200	LED 5700K - 75 CRI		1170W	150,000	>120,000	>120,000	>120,000	4
TLC-LED-550	LED 5700K - 75 CRI		540W	67,000	>120,000	>120,000	>120,000	4
TLC-LED-900	LED 5700K - 75 CRI		880W	104,000	>120,000	>120,000	>120,000	8

Single Luminaire Amperage Draw Chart								
Driver Specifications (.90 min power factor)	Line Amperage Per Luminaire (max draw)							
	208 (60)	220 (60)	240 (60)	277 (60)	347 (60)	380 (60)	480 (60)	
TLC-LED-1200	6.9	6.5	6.0	5.2	4.2	3.8	3.0	
TLC-LED-550	3.2	3.0	2.8	2.4	1.9	1.8	1.4	
TLC-LED-900	5.2	4.9	4.5	3.9	3.1	2.9	2.3	

Light Level Summary

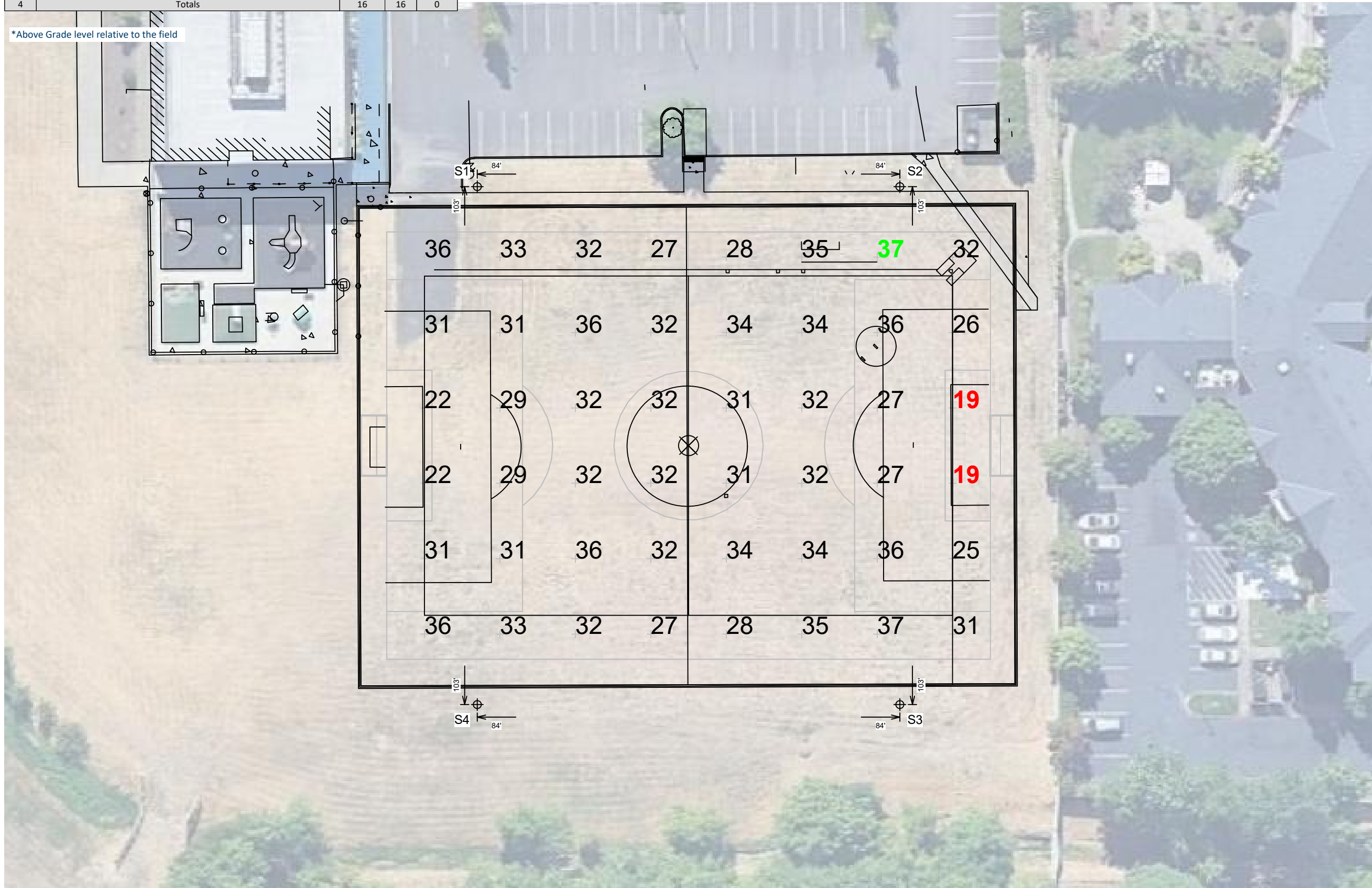
Calculation Grid Summary								
Grid Name	Calculation Metric	Illumination					Circuits	Fixture Qty
		Ave	Min	Max	Max/Min	Ave/Min		
Blanket Grid	Horizontal Illuminance	2.26	0	31.8	0.00		A	16
Property Line Spill	Horizontal Illuminance	0.55	0	4.13	0.00		A	16
Property Line Spill	Max Candela Metric	7538	0.79	39146	49552.63	9542.18	A	16
Property Line Spill	Max Vertical Illuminance Metric	0.82	0	5.96	0.00		A	16
Soccer	Horizontal Illuminance	31	18.8	37.4	1.99	1.65	A	16

From Hometown to Professional



Equipment List For Areas Shown								
Pole				Luminaires				
QTY	LOCATION	SIZE	GRADE ELEVATION	ABOVE GRADE LEVEL	LUMINAIRE TYPE	QTY/POLE	THIS GRID	OTHER GRIDS
4	S1-S4	60'	-	59.7'	TLC-LED-1200	1	1	0
				59.7'	TLC-LED-550	1	1	0
				59.7'	TLC-LED-900	2	2	0
4	Totals					16	16	0

*Above Grade level relative to the field



East Salem Community Center Turf Field

Salem, OR

Grid Summary	
Name	Soccer
Size	240' x 170'
Spacing	30.0' x 30.0'
Height	3.0' above grade

Illumination Summary	
	MAINTAINED HORIZONTAL FOOTCANDLES
	Entire Grid
Guaranteed Average	30
Scan Average	31.0
Maximum	37.4
Minimum	18.8
Avg/Min	1.65
Guaranteed Max/Min	3
Max/Min	1.99
UG (adjacent pts)	1.46
CU	0.80
No. of Points	48
LUMINAIRE INFORMATION	
Applied Circuits	A
No. of Luminaires	16
Total Load	13.88 kW

Guaranteed Performance: The ILLUMINATION described above is guaranteed per your Musco Warranty document and includes a 0.95 dirt depreciation factor.

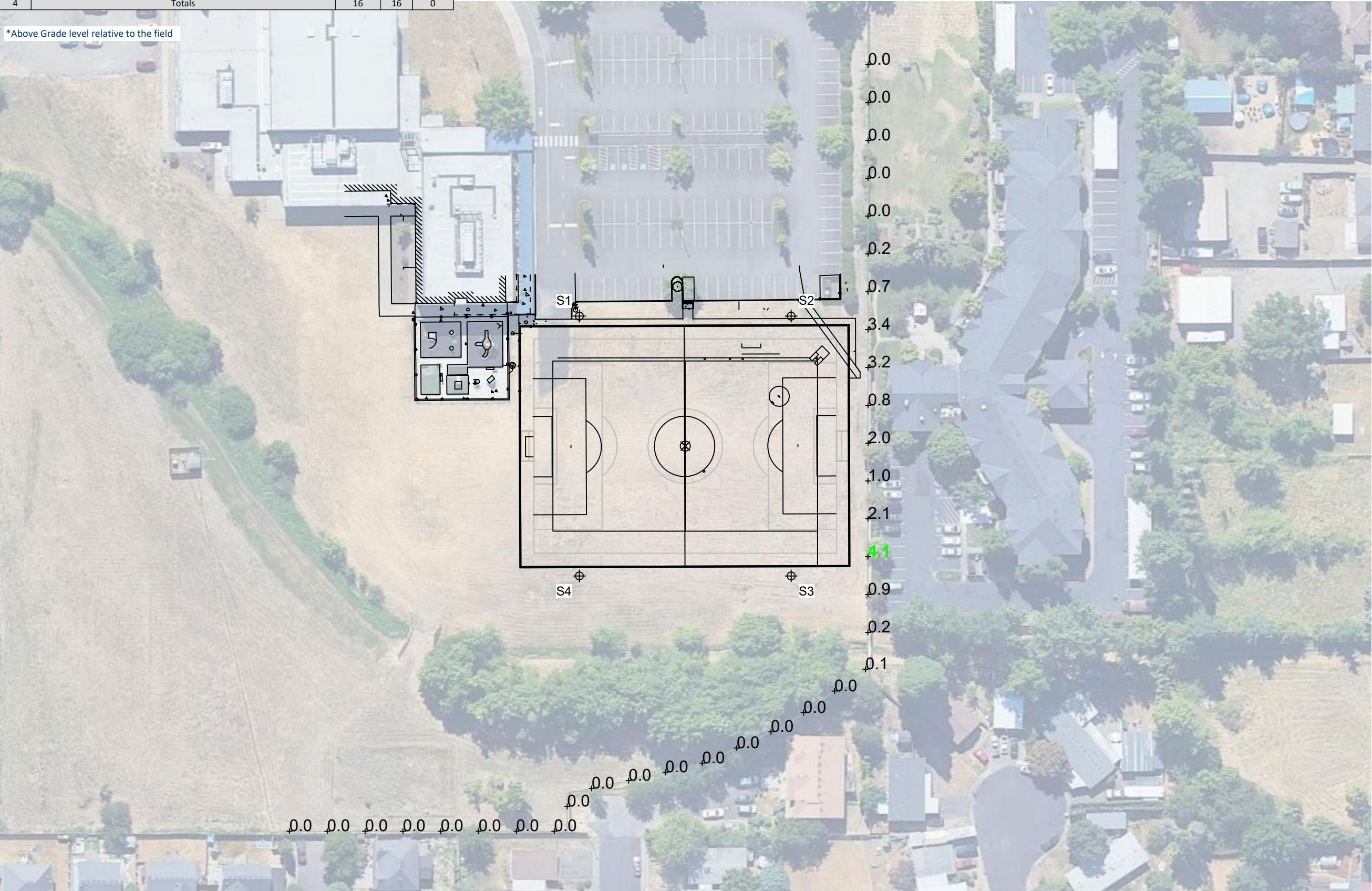
Field Measurements: Individual field measurements may vary from computer-calculated predictions and should be taken in accordance with IESNA RP-6-15.

Electrical System Requirements: Refer to Amperage Draw Chart and/or the "Musco Control System Summary" for electrical sizing.

Installation Requirements: Results assume ± 3% nominal voltage at line side of the driver and structures located within 3 feet (1m) of design locations.

Equipment List For Areas Shown								
Pole				Luminaires				
QTY	LOCATION	SIZE	GRADE ELEVATION	ABOVE GRADE LEVEL	LUMINAIRE TYPE	QTY/POLE	THIS GRID	OTHER GRIDS
4	S1-S4	60'	-	59.7'	TLC-LED-1200	1	1	0
				59.7'	TLC-LED-550	1	1	0
				59.7'	TLC-LED-900	2	2	0
4	Totals					16	16	0

*Above Grade level relative to the field



East Salem Community Center Turf Field

Salem, OR

Grid Summary			
Name	Property Line Spill		
Spacing	30.0' x 150.0'		
Height	3.0' above grade		

Illumination Summary	
MAINTAINED HORIZONTAL FOOTCANDLES	
Entire Grid	
Scan Average	0.553
Maximum	4.131
Minimum	0.000
CU	0.04
No. of Points	7
LUMINAIRE INFORMATION	
Applied Circuits	A
No. of Luminaires	16
Total Load	13.88 kW

Guaranteed Performance: The ILLUMINATION described above is guaranteed per your Musco Warranty document and includes a 0.95 dirt depreciation factor.

Field Measurements: Individual field measurements may vary from computer-calculated predictions and should be taken in accordance with IESNA RP-6-15.

Electrical System Requirements: Refer to Amperage Draw Chart and/or the "Musco Control System Summary" for electrical sizing.

Installation Requirements: Results assume ± 3% nominal voltage at line side of the driver and structures located within 3 feet (1m) of design locations.

Equipment List For Areas Shown								
Pole				Luminaires				
QTY	LOCATION	SIZE	GRADE ELEVATION	ABOVE GRADE LEVEL	LUMINAIRE TYPE	QTY/POLE	THIS GRID	OTHER GRIDS
4	S1-S4	60'	-	59.7'	TLC-LED-1200	1	1	0
				59.7'	TLC-LED-550	1	1	0
				59.7'	TLC-LED-900	2	2	0
4	Totals				16	16	0	

*Above Grade level relative to the field



East Salem Community Center Turf Field

Salem, OR

Grid Summary			
Name	Property Line Spill		
Spacing	30.0' x 150.0'		
Height	3.0' above grade		

Illumination Summary	
MAINTAINED MAX VERTICAL FOOTCANDLES	
Entire Grid	
Scan Average	0.822
Maximum	5.958
Minimum	0.000
CU	0.04
No. of Points	7
LUMINAIRE INFORMATION	
Applied Circuits	A
No. of Luminaires	16
Total Load	13.88 kW

Guaranteed Performance: The ILLUMINATION described above is guaranteed per your Musco Warranty document and includes a 0.95 dirt depreciation factor.

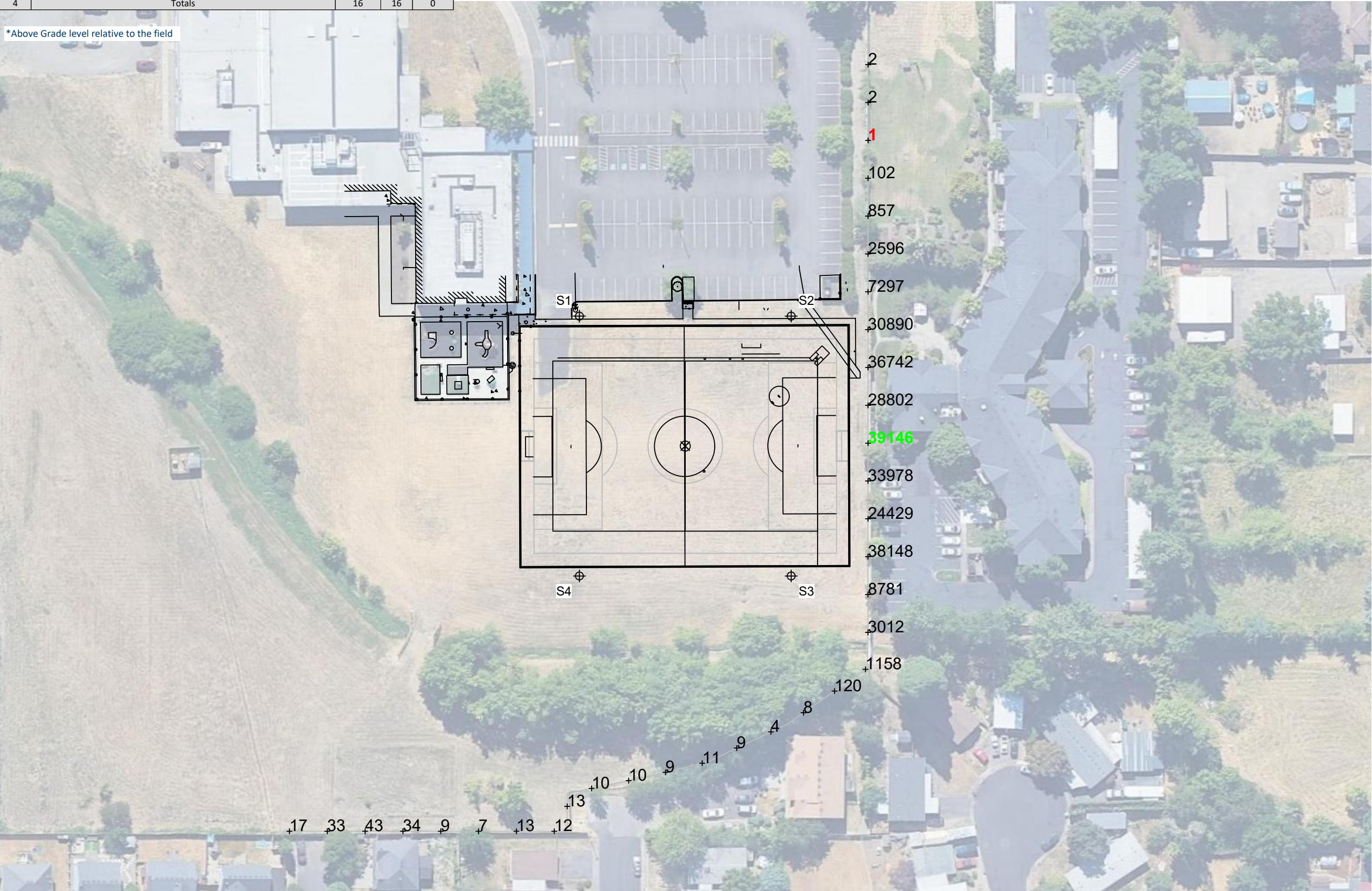
Field Measurements: Individual field measurements may vary from computer-calculated predictions and should be taken in accordance with IESNA RP-6-15.

Electrical System Requirements: Refer to Amperage Draw Chart and/or the "Musco Control System Summary" for electrical sizing.

Installation Requirements: Results assume ± 3% nominal voltage at line side of the driver and structures located within 3 feet (1m) of design locations.

Equipment List For Areas Shown								
Pole				Luminaires				
QTY	LOCATION	SIZE	GRADE ELEVATION	ABOVE GRADE LEVEL	LUMINAIRE TYPE	QTY/POLE	THIS GRID	OTHER GRIDS
4	S1-S4	60'	-	59.7'	TLC-LED-1200	1	1	0
				59.7'	TLC-LED-550	1	1	0
				59.7'	TLC-LED-900	2	2	0
4	Totals				16	16	0	

*Above Grade level relative to the field



East Salem Community Center Turf Field

Salem, OR

Grid Summary			
Name	Property Line Spill		
Spacing	30.0' x 150.0'		
Height	3.0' above grade		

Illumination Summary	
	MAINTAINED CANDELA (PER FIXTURE)
	Entire Grid
Scan Average	7538.325
Maximum	39146.035
Minimum	0.790
CU	0.04
No. of Points	7
LUMINAIRE INFORMATION	
Applied Circuits	A
No. of Luminaires	16
Total Load	13.88 kW

Guaranteed Performance: The ILLUMINATION described above is guaranteed per your Musco Warranty document and includes a 0.95 dirt depreciation factor.

Field Measurements: Individual field measurements may vary from computer-calculated predictions and should be taken in accordance with IESNA RP-6-15.

Electrical System Requirements: Refer to Amperage Draw Chart and/or the "Musco Control System Summary" for electrical sizing.

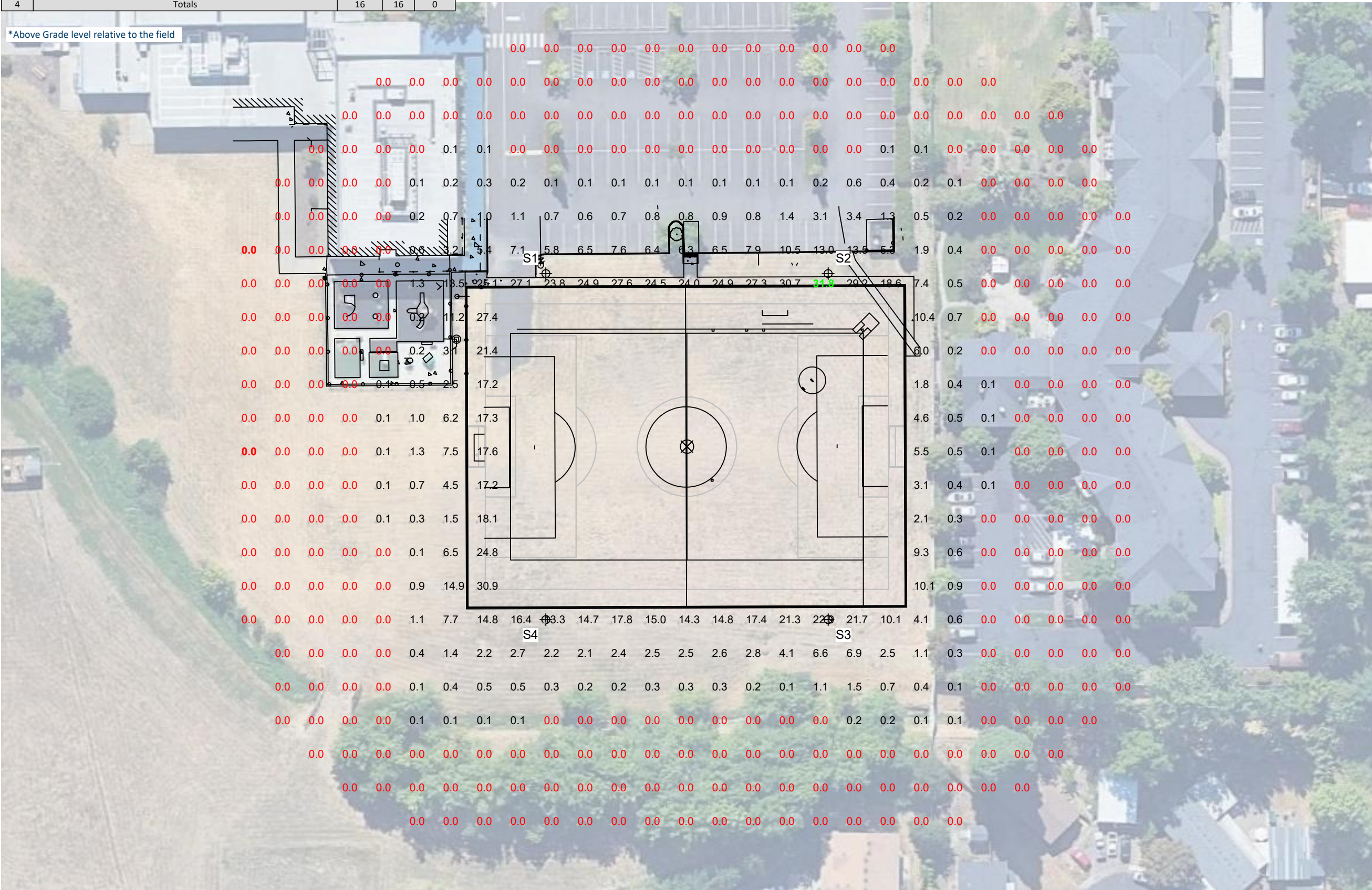
Installation Requirements: Results assume ± 3% nominal voltage at line side of the driver and structures located within 3 feet (1m) of design locations.



Not to be reproduced in whole or part without the written consent of Musco Sports Lighting, LLC. ©1981, 2023 Musco Sports Lighting, LLC.

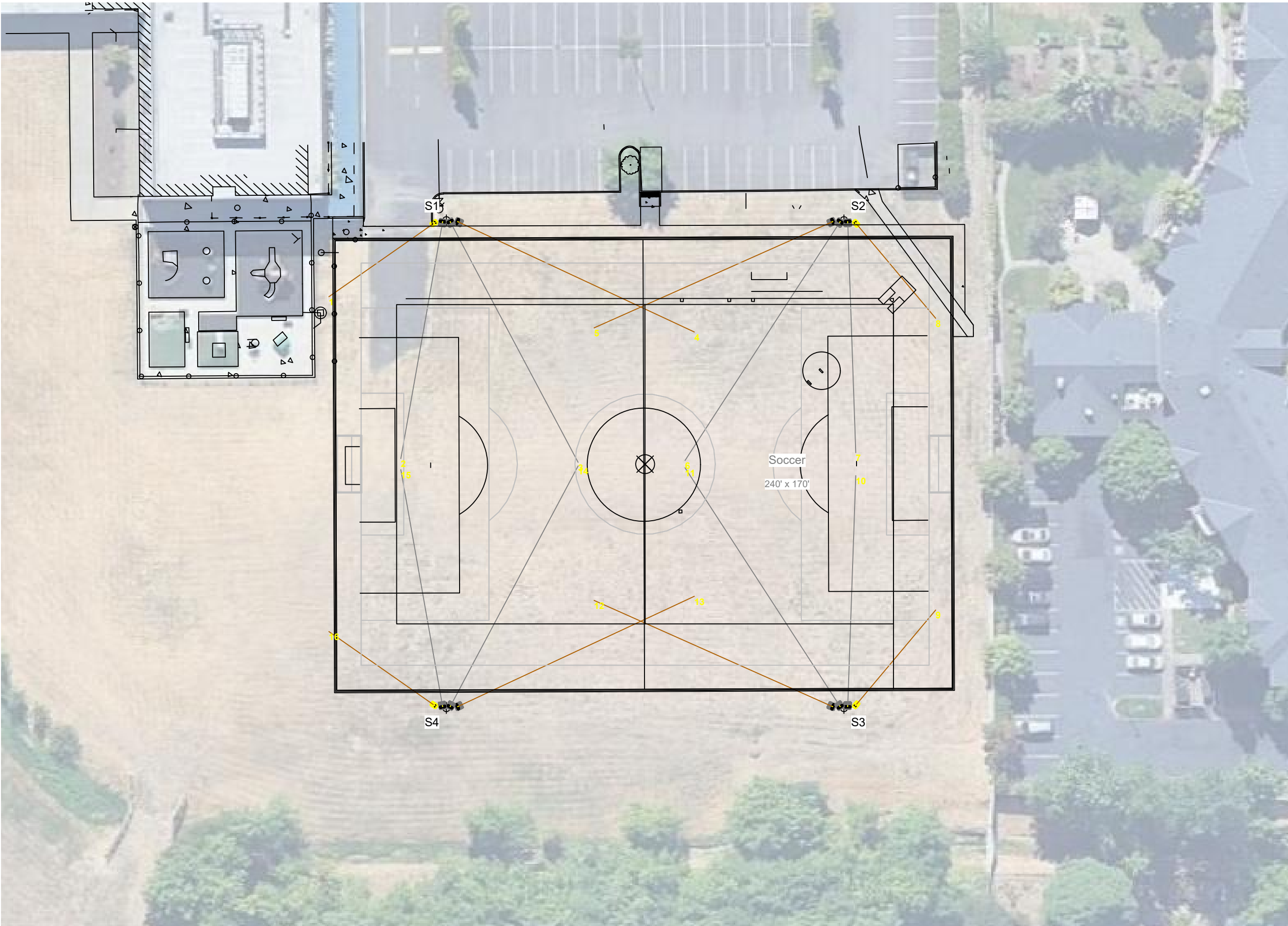
ILLUMINATION SUMMARY

*Above Grade level relative to the field



Pole location(s) \oplus dimensions are relative to 0,0 reference point(s) \otimes

ILLUMINATION SUMMARY



East Salem Community Center Turf Field

Salem, OR

Equipment Layout

INCLUDES:

· Soccer

Electrical System Requirements: Refer to Amperage Draw Chart and/or the "Musco Control System Summary" for electrical sizing.

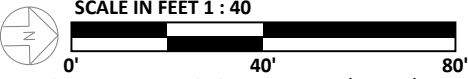
Installation Requirements: Results assume ± 3% nominal voltage at line side of the driver and structures located within 3 feet (1m) of design locations.

Equipment List For Areas Shown

Pole				Luminaires		
QTY	LOCATION	SIZE	GRADE ELEVATION	ABOVE GRADE LEVEL	LUMINAIRE TYPE	QTY/POLE
4	S1-S4	60'	-	59.7'	TLC-LED-1200	1
				59.7'	TLC-LED-550	1
				59.7'	TLC-LED-900	2
4	Totals					16

Single Luminaire Amperage Draw Chart

Driver Specifications (.90 min power factor)	Line Amperage Per Luminaire (max draw)						
	208 (60)	220 (60)	240 (60)	277 (60)	347 (60)	380 (60)	480 (60)
Single Phase Voltage							
TLC-LED-1200	6.9	6.5	6.0	5.2	4.2	3.8	3.0
TLC-LED-550	3.2	3.0	2.8	2.4	1.9	1.8	1.4
TLC-LED-900	5.2	4.9	4.5	3.9	3.1	2.9	2.3



ENGINEERED DESIGN By: Vashon Alexander • File #233941A • 09-Feb-24

Pole location(s) ⊕ dimensions are relative to 0,0 reference point(s) ✕



We Make It Happen®

Not to be reproduced in whole or part without the written consent of Musco Sports Lighting, LLC. ©1981, 2023 Musco Sports Lighting, LLC.