



APPROVED

By Katie Tumavich at 1:20 pm, Feb 28, 2024

Store #1865 – Salem, OR
4450 Commercial St SE, STE 130
Salem, OR 97302

SO#: 176127 | Created: 07.26.2023 | Last Revised: 02.28.2024

SIGN SCOPE INDEX

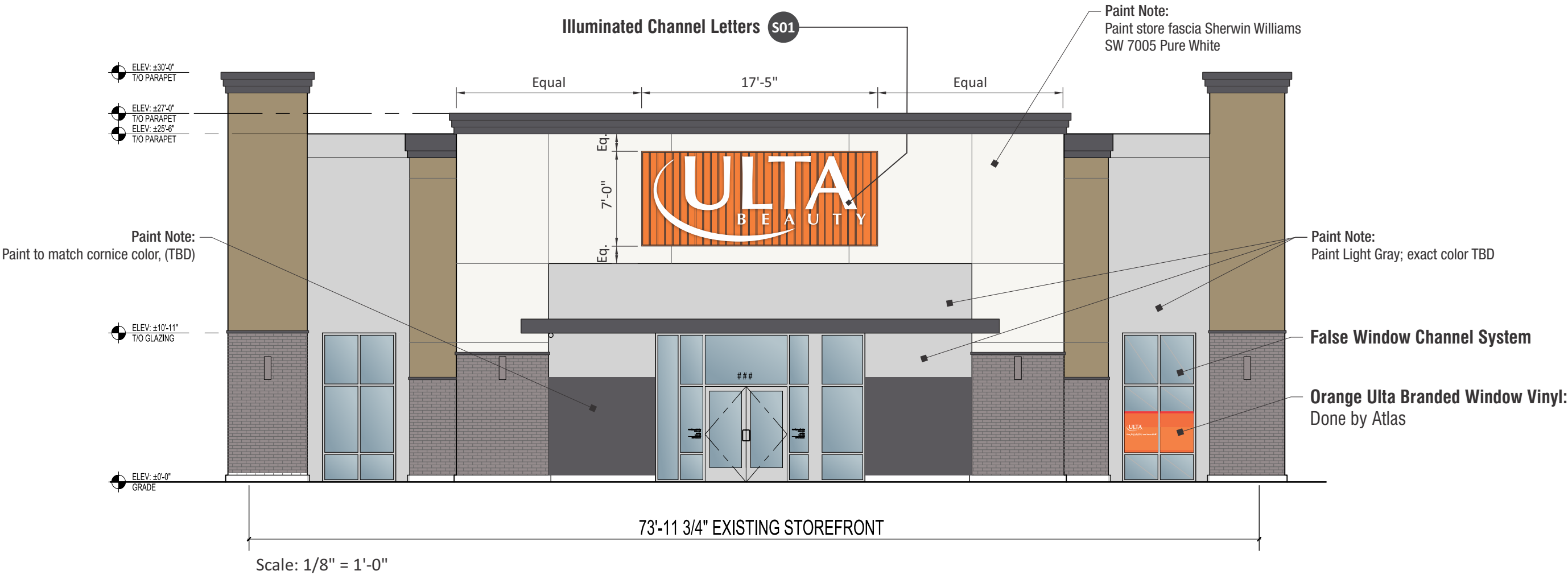
- S01 (1) Set Illuminated Channel Letters On Background
- S02 (1) Pylon Sign - Tenant Faces
- S03 (1) Pylon Sign - Tenant Faces
- S04 (1) Temporary Construction Sign
- S05 (2) Portable Pickup Signs
- S06 (1) Training Room FCO's
- S07 (2) Window Graphics

APPLICABLE CODE

- **CODE:** Wall Signage Allotment is based on the face area of the building frontage. 2,001 to 4,000 sq ft = 240 square feet or 10 percent of the gross face area.
- Allowable Square Footage: TBD
- Proposed Front S.F.: **TBD**



LL Signature: _____
Printed Name: _____
Company: _____
Date: _____



- S01 (1) Set Illuminated Channel Letters (on Background panel provide by G.C.)
- S07 (2) Vinyl window graphics, Done by Atlas

The storefront elevation (including the awnings) shown in this exhibit is only for design intent purposes. The final storefront elevation shall be as set forth in Landlord's final plans and specifications mutually approved by Landlord and Tenant.

Note:
Elevation shown is preliminary, field survey required prior to fabrication of letters & awnings.

No control joints or reveals around the sign area.
All joint location to be on all shell approved plans for review and approval.



EXISTING ELEVATION



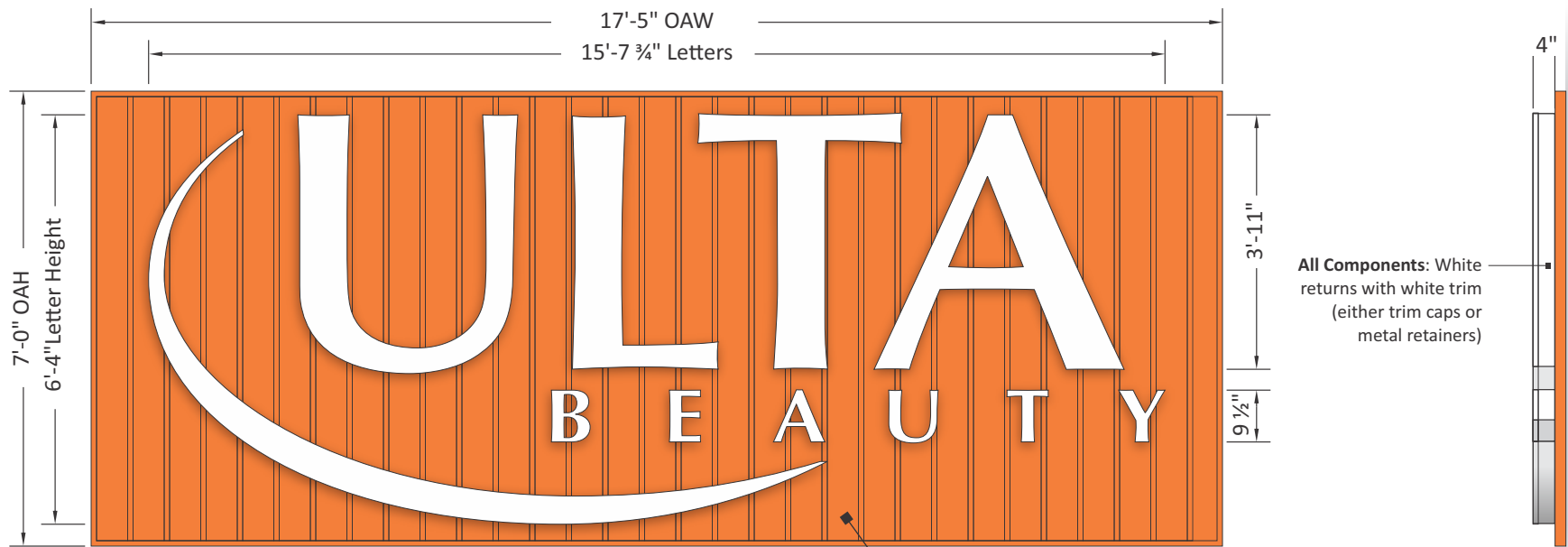
National Headquarters: 1077 West Blue Heron Blvd.
West Palm Beach, Florida 33404
800.772.7932
www.atlasbtw.com

Revisions:
PP 07.31.2023 New elevation and windows added
PP 08.02.2023 Door removed, changed to window
PP 09.05.2023 Notes added.
PP 12.07.2023 Changed to corrugated BG sign w/ Letterset
PP 12.19.2023 New elevation added
PP 02.28.2024 New elevation added

LL Signature: _____
Printed Name: _____
Company: _____
Date: _____

Store #1865

PM: KS	Address: 4450 Commercial St SE, STE 130
Drawn By: JT	City State: Salem, OR 97302
Date: 02.28.2024	Drawing Number: 176127 - ELEV1
Page: 2	



Scale: 3/8" = 1'-0"

SCOPE

- Manufacture & install (1) new primary channel-letter set.

GENERAL DESCRIPTION

- Channels constructed of aluminum (.040 returns, .063 backs, 4" depth)
- ALL Returns are of pre-finished white aluminum
- Faces of white (7328) acrylic
- Faces secured with either 1" trim caps or 7/16" metal retainers (see Detail A for more detail)
- Letters are internally illuminated by white, 24V GE LED modules
- Power supplies are installed remotely (behind fascia)
- Letters installed onto exterior fascia with non-corrosive fasteners

SQUARE FOOTAGE

- 7'-0" x 17'-5" = 121.91 SF

COLOR SCHEDULE

- ALL FACES: 7328 White acrylic
- ALL RETURNS: Pre-finished white (gloss)
- TRIM CAPS and METAL RETAINERS: Painted white (gloss)

Corrugated Background panel done by G.C.

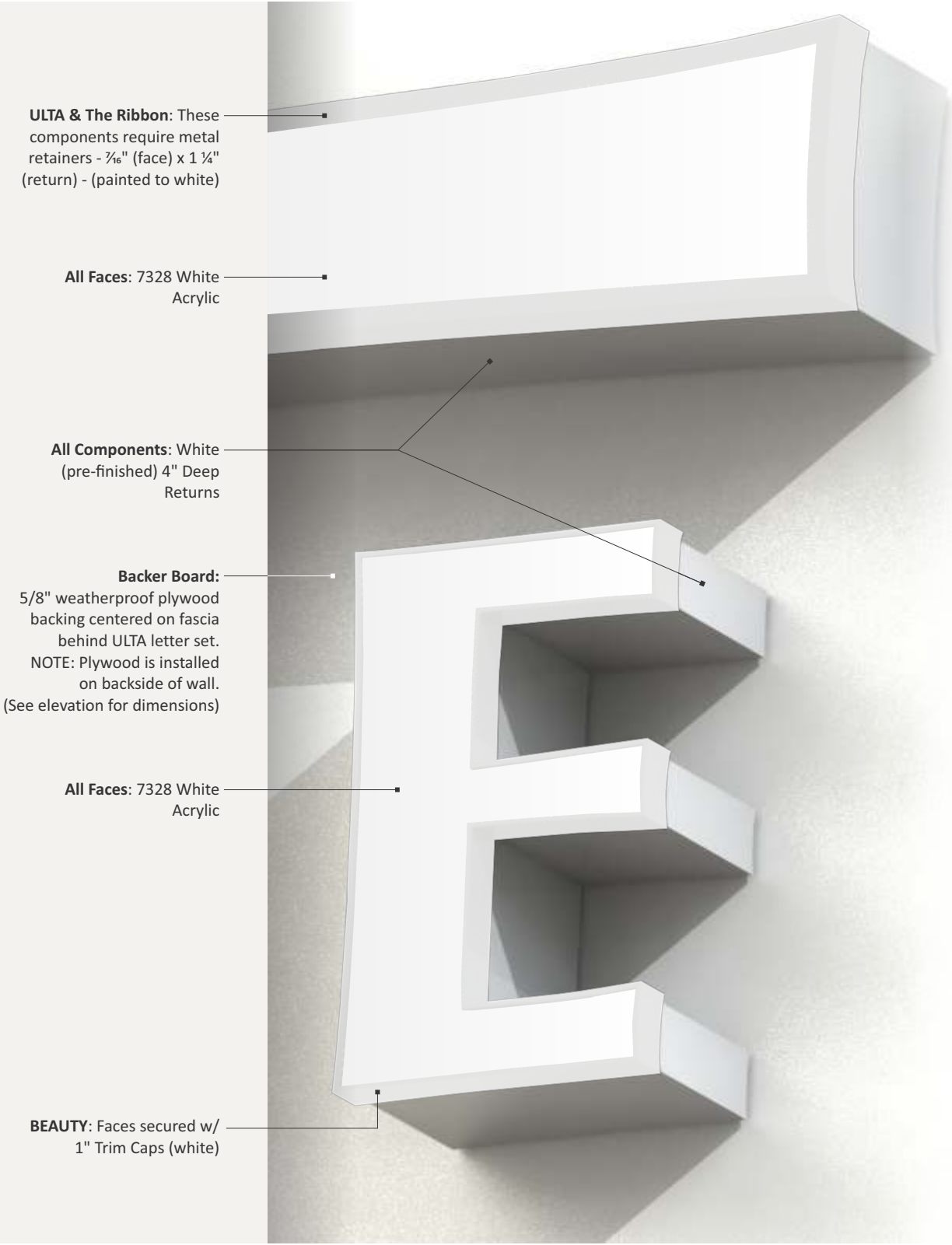
Aluminum background panel constructed using aluminum 2"x2"x1/8" angle framing w/ a corrugated .100 aluminum face. Entire panel to have a urethane enamel finish matching PMS 158 Orange Pop.

Panel to be mounted using 1-1/2" x 2" x 3/16" aluminum clip angles top and bottom.

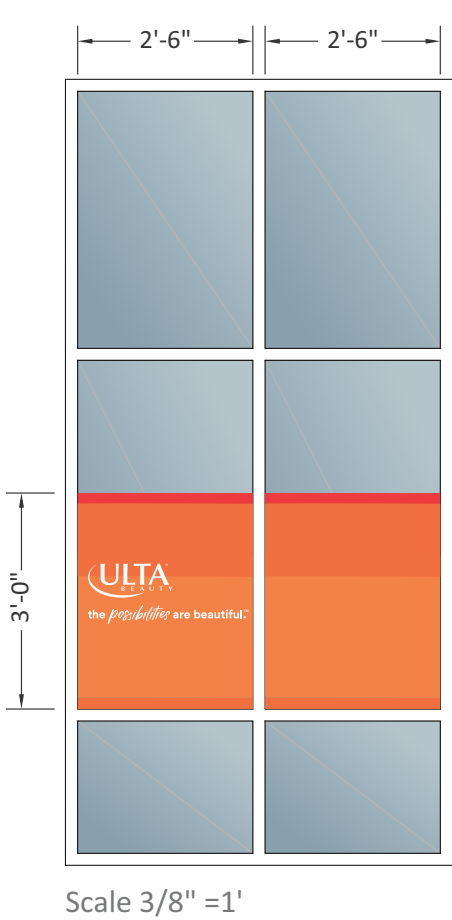
2"x2"x1/8" aluminum angle to back up vertical seams. Horizontal supports as needed.



Nighttime Viewing



Detail A



Field survey required prior to production


SCOPE

- Manufacture & install (2) New vinyl graphics first surface to windows as shown.

GENERAL DESCRIPTION

- Window graphics are digitally printed with UV protection.

COLOR SCHEDULE

 **Vinyl:** Digitally printed to match with UV protection (First Surface Application)

